

RE 110 e-FILING REPORT COVER SHEET

REPORT NAME:

PGE's 2015 Report on Fixed Renewable Option Resource Development Fund and PGE's Update on Green Source Development Fund

COMPANY NAME:

Portland General Electric

DOES REPORT CONTAIN CONFIDENTIAL INFORMATION?

No

If known, please select designation:

RE 110 (Electric)

Report is required by:

PGE's Tariff Schedules 7 and 32

Is this report associated with a specific docket/case?

No

Key words:

PGE's 2015 Report on Fixed Renewable Option Resource Development Fund and PGE's Update on Green Source Development Fund

If known, please select the PUC Section to which the report should be directed:

Electric Rates and Planning



Portland General Electric Company
121 SW Salmon Street • Portland, Oregon 97204
PortlandGeneral.com

April 1, 2016

Public Utility Commission of Oregon
Attn: Filing Center
201 High Street, S.E.
P.O. Box 1088
Salem, OR 97308-1088

Re: PGE's 2015 Report on Fixed Renewable Option Resources Development Fund
and PGE's Update on Green Source Development Fund

Enclosed is PGE's Fixed Renewable Option Resource Development Fund report for the 2015 annual reporting period. PGE hereby submits the report in accordance to the requirements stated in PGE Schedule 7 and 32 under the Fixed Renewable Option within the Renewable Portfolio Options section. Our tariff requires that the Company report to the Commission annually by April 1st for the preceding year, collections into and disbursements out of the fund. PGE is in the process of working with OPUC Staff to update the form and content of this report, and expects to use the new format in 2017 for the 2016 reporting year.

Fixed Renewable Option Resource Development Fund (aka Clean Wind Fund):

As part of its renewable portfolio options offered to residential (Schedule 7) and small commercial (Schedule 32) customers, PGE offers customers the opportunity to contribute to a new renewable resources development and demonstration fund. According to the tariffed provision, amounts in the fund are disbursed by the Company to public renewable resource demonstration projects or projects which commit to supply energy according to a contractually established timetable. Attachment A provides the following detail: a) revenues collected for the fixed renewable option; b) revenues that represent contributions to the fund; c) various program costs; and d) expenditures (Grants) from the fund. There were no funds disbursed from the fund for demonstration or other projects as PGE spent the better part of the year, waiting for its renewable fund guidelines to be reviewed by the PUC. The guidelines set forth the process and criteria for the funding of projects.

Green Source Development Fund:

In 2014, the OPUC's Portfolio Options Committee (POC) recommended to the OPUC and the OPUC approved, as part of the UM 1020 annual staff report, moving \$7.3 million from the Green Source Reserve Fund into a Green Source Development Fund. The rationale for moving the funds is provided in the UM 1020 Staff report. Although PGE's tariff is silent on reporting collections and disbursements into the Green Source Development Fund¹, the POC's intent was that the two development funds be governed by the same criteria and process for granting funds to renewable projects.

In 2015, \$2.0 million from the Green Source Development Fund was awarded to the Portland Public Schools (PPS) rooftop solar project. The POC reviewed and approved the grant. Information about the PPS project is included in Attachment B.

If you have questions regarding this report, please contact Terri Bowman at (503) 464-8854 or Mary Widman at (503) 464-8223.

Please direct all formal correspondence and requests to the following email address pge.opuc.filings@pqn.com

Sincerely,



Karla Wenzel
Manager, Pricing and Tariffs

cc: Julie Peacock, ODOE, POC Chair
Brittany Andrus, OPUC

¹ PGE is working with Staff on amending its tariff to require reporting on both development funds and internally, PGE has combined the two funds into one called the Renewable Development Fund (RDF)

Attachment A

**Fixed Renewable Option Development Fund
Year 2015**

**Fixed Renewable Option Development Fund (Clean Wind)
Year 2015**

Date	Blocks Sold	Total Revenue Collected	Rev Collected for Resource		Rev Collected for Wind		Interest on Dev Fund		Exps From the Wind Dev Resource Fund		Balance in Wind Resource Dev Fund	
			Costs, Mktg & Admin	Admin	Resource	Dev Fund	Resource	Dev Fund	Resource Fund	Dev Fund	Resource Fund	Dev Fund
Beginning Balance												\$ 4,443,580.68
Jan-15	14,030	35,075.56	14,030.22		21,045.34		28,066.42		0.00			\$ 4,492,692.44
Feb-15	13,899	34,747.46	13,898.98		20,848.48		28,375.26		0.00			\$ 4,541,916.18
Mar-15	13,903	34,757.49	13,903.00		20,854.49		28,685.45		0.00			\$ 4,591,456.12
Apr-15	13,905	34,762.41	13,904.96		20,857.45		28,997.63		0.00			\$ 4,641,311.20
May-15	13,834	34,584.56	13,833.82		20,750.74		29,311.44		0.00			\$ 4,691,373.38
Jun-15	13,775	34,438.07	13,775.23		20,662.84		29,626.62		0.00			\$ 4,741,662.84
Jul-15	13,685	34,212.75	13,685.10		20,527.65		29,943.08		0.00			\$ 4,792,133.57
Aug-15	13,604	34,009.72	13,603.89		20,405.83		30,260.72		0.00			\$ 4,842,800.12
Sep-15	13,513	33,783.62	13,513.45		20,270.17		30,579.56		0.00			\$ 4,893,649.85
Oct-15	13,154	32,885.17	13,154.07		19,731.10		30,898.28		0.00			\$ 4,944,279.23
Nov-15	13,470	33,676.18	13,470.47		20,205.71		31,218.80		0.00			\$ 4,995,703.74
Dec-15	13,196	32,987.55	13,195.02		19,792.53		31,541.54		0.00			\$ 5,047,037.81
Total	163,968	\$ 409,920.54	\$ 163,968.21	\$ 245,952.33	\$ 357,504.80	\$ -						

Blocks Sold x 200 32,793,643 kWh 32,793.64 Tags (1 MWh/tag)

Attachment B

**Green Source Development Fund
Year 2015**

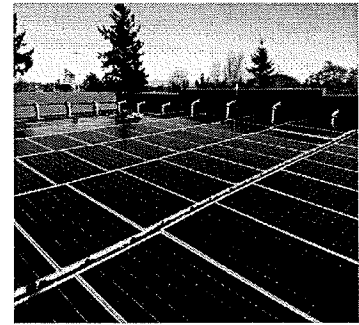
Green Source Development Fund
Year 2015

Date	Total Revenue Collected	PGE Admin	Rev Collected for		Rev Collected for Green Tags	Interest on Dev From the Source Fund	Disbursement From the Green Source Fund	Balance in Wind Resource Dev Fund
			Mktg & Admin	Mktg & Admin				
Beginning Balance								\$ 7,707,876.85
Jan-15	746,289.96	37,314.50	382,473.60	326,501.86	48,569.26	0.00	0.00	\$ 7,756,446.11
Feb-15	616,010.14	30,800.51	315,705.20	269,504.44	48,875.31	0.00	0.00	\$ 7,805,321.42
Mar-15	559,547.57	27,977.38	286,768.13	244,802.06	49,188.28	0.00	0.00	\$ 7,854,504.70
Apr-15	537,239.96	26,862.00	275,335.48	235,042.48	49,493.20	0.00	0.00	\$ 7,903,997.90
May-15	509,903.83	25,495.19	261,325.71	223,082.93	49,805.07	0.00	0.00	\$ 7,953,802.97
Jun-15	534,203.95	26,710.20	273,779.52	233,714.23	50,118.90	0.00	0.00	\$ 8,003,921.87
Jul-15	673,759.85	33,687.99	345,301.92	294,769.93	50,434.71	0.00	0.00	\$ 8,054,356.58
Aug-15	650,364.91	32,518.25	333,312.02	284,534.65	50,752.51	0.00	0.00	\$ 8,105,109.09
Sep-15	595,958.30	29,797.92	305,428.63	260,731.76	51,072.32	0.00	0.00	\$ 8,156,181.41
Oct-15	519,462.76	25,973.14	266,224.66	227,264.96	51,394.14	0.00	0.00	\$ 8,207,575.55
Nov-15	612,299.17	30,614.96	313,803.32	267,880.89	51,717.99	0.00	0.00	\$ 8,259,293.54
Dec-15	891,610.86	44,580.54	456,950.57	390,079.75	52,043.87	2,000,000.00	2,000,000.00	\$ 6,311,337.41
Total	\$ 7,446,651.26	\$ 372,332.58	\$ 3,816,408.76	\$ 3,257,909.94	\$ 603,460.56	\$ 2,000,000.00	\$ 2,000,000.00	

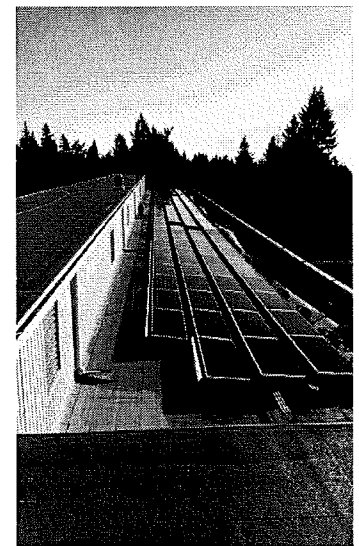
Portland Public Schools Solar Project



The PPS Solar project is a project consisting of rooftop photovoltaic crystalline modules installed on PPS school buildings in Multnomah County. The aggregate installed capacity is expected to be 1.2 MW. The project is expected to produce enough power to offset approximately half of the participating schools' electric usage. PGE will have the option to purchase the Project after year 6. The project received approximately \$1 million in incentives from the Energy Trust of Oregon and \$2 million from the Renewable Development Fund.



- Schools' solar systems were placed in service December 7 – 16, 2015.
- Renewable Energy Credits will be distributed among PPS, PGE's renewable customers providing the RDF incentive funding, and PGE customers providing ETO incentive monies.
- Bonneville Environmental Fund teacher trainings were held February 20, February 27, and March 5, 2016.
- Educational kiosks will be located outside each school project.



\$4.6 million
Total project cost

\$3.89
Price per watt

1.17 MW
Nameplate capacity

6
Number of schools