



e-FILING REPORT COVER SHEET

COMPANY NAME: PacifiCorp d/b/a Pacific Power

DOES REPORT CONTAIN CONFIDENTIAL INFORMATION? No Yes If yes, submit a redacted public version (or a cover letter) by email. Submit the confidential information as directed in OAR 860-001-0070 or the terms of an applicable protective order.

Select report type: RE (Electric) RG (Gas) RW (Water) RT (Telecommunications)
 RO (Other, for example, industry safety information)

Did you previously file a similar report? No Yes, report docket number: RE 107

Report is required by: OAR 860-023-0161

Statute

Order

Note: A one-time submission required by an order is a compliance filing and not a report (file compliance in the applicable docket)

Other

(For example, federal regulations, or requested by Staff)

Is this report associated with a specific docket/case? No Yes, docket number: RE 107

List Key Words for this report. We use these to improve search results.

Major Event Report

Send the completed Cover Sheet and the Report in an email addressed to PUC.FilingCenter@state.or.us

Send confidential information, voluminous reports, or energy utility Results of Operations Reports to PUC Filing Center, PO Box 1088, Salem, OR 97308-1088 or by delivery service to 201 High Street SE Suite 100, Salem, OR 97301.

April 11, 2024

VIA ELECTRONIC FILING

Public Utility Commission of Oregon
Attn: Filing Center
201 High Street SE, Suite 100
Salem, OR 97301-3398

Re: RE 107—PacifiCorp Major Event Report

In compliance with OAR 860-023-0161, PacifiCorp d/b/a Pacific Power (PacifiCorp) submits the enclosed report describing a major event that occurred March 1-5, 2024, due to a winter storm.

PacifiCorp requests to exclude the outage information for this event from both its network performance reporting and customer guarantee failure payments.

If you require further information regarding this report, please contact Kevin Benson, Director, Asset Risk, at (541) 213-1990.

Sincerely,



Matthew McVee
Vice President, Regulatory Policy and Operations

Enclosures

Cc: Heide Caswell/Administrator, Utility Safety, Reliability, and Security Division

Report to the Oregon Public Utility Commission
Electric Service Reliability - Major Event Report

Event Date: March 1-5, 2024
 Date Submitted: April 11, 2024
 Primary Affected Locations: Oregon
 Primary Cause: Winter Storm
 Exclude from Reporting Status: Yes
 Report Prepared by: Tia Solis
 Report Approved by: Kevin Benson

Event Customer Impact and Outage Summary

Event Outage Summary	
# Interruptions (sustained)	312
Total Customer Interrupted (sustained)	20,596
Total Customer Minutes Lost	9,580,288
State Event SAIDI	15.19 Minutes
CAIDI	465
Major Event Start	3/1/24 12:40 PM
Major Event End	3/5/24 3:41 PM

Area Outages and Restoration Details

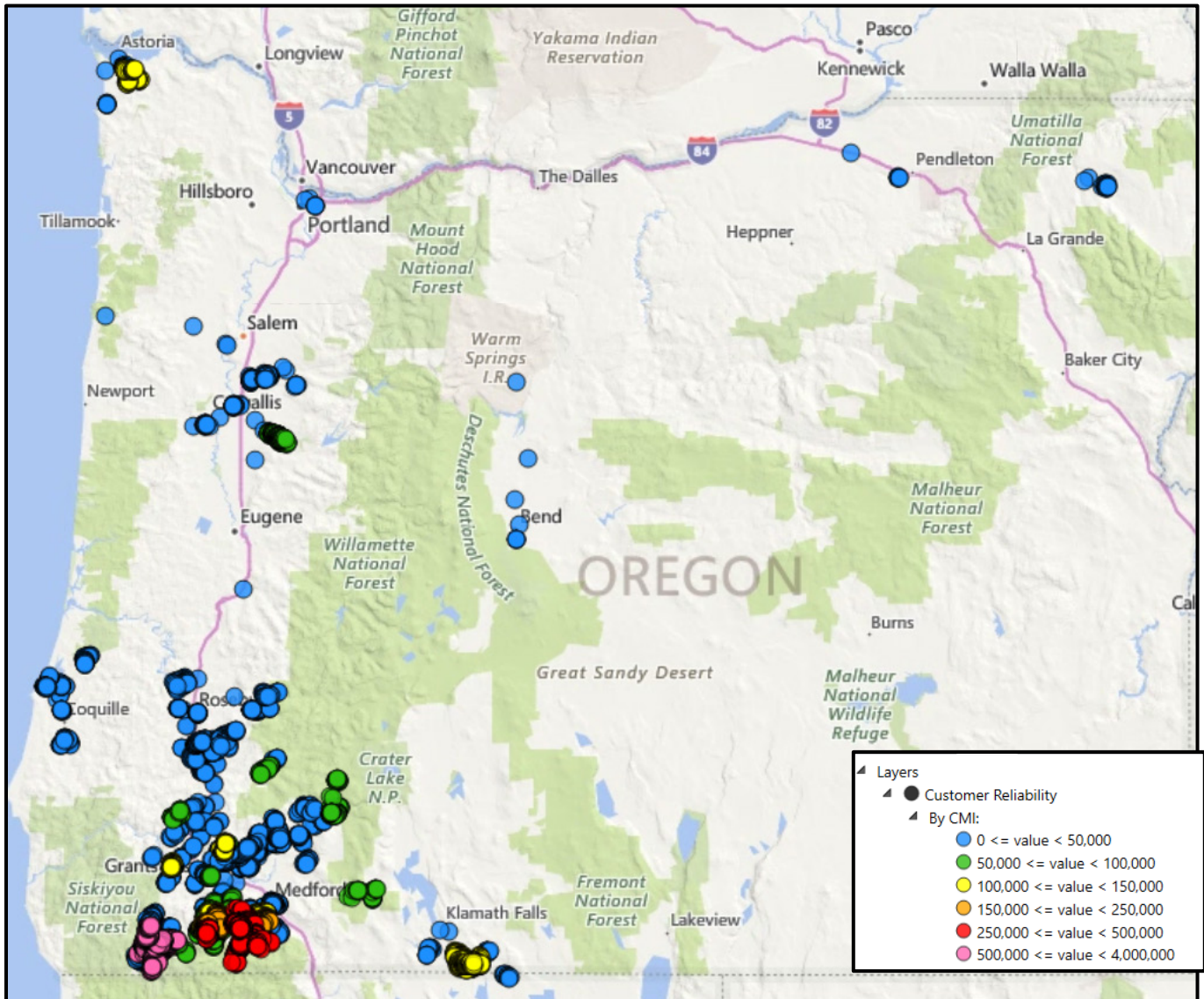
On March 1, the state of Oregon experienced a major event due to a winter storm. The event began at 12:40 p.m. affecting service to 20,596 customers with 8,165 customers impacted at the peak of the event. A total of 73 substations were involved serving a total of 92 circuits. Outage duration ranged from 6 minutes to 70 hours and 13 minutes, with an average outage duration of 12 hours. As the storm continued, effects of the snow started to damage vegetation leading to electric infrastructure damage. Heavy snow accumulating on trees caused branches and trees to give way, downing lines across the area. During the event, tree crews cleared interfering vegetation while line crews followed, making repairs, and restoring customers. Approximately 52% of customer minutes lost (CML) was related to tree damage and 28% related to extreme weather with Grants Pass having the greatest impact at 67% of CML. The below figure shows the CML through Oregon over the course of the major event.

Weather

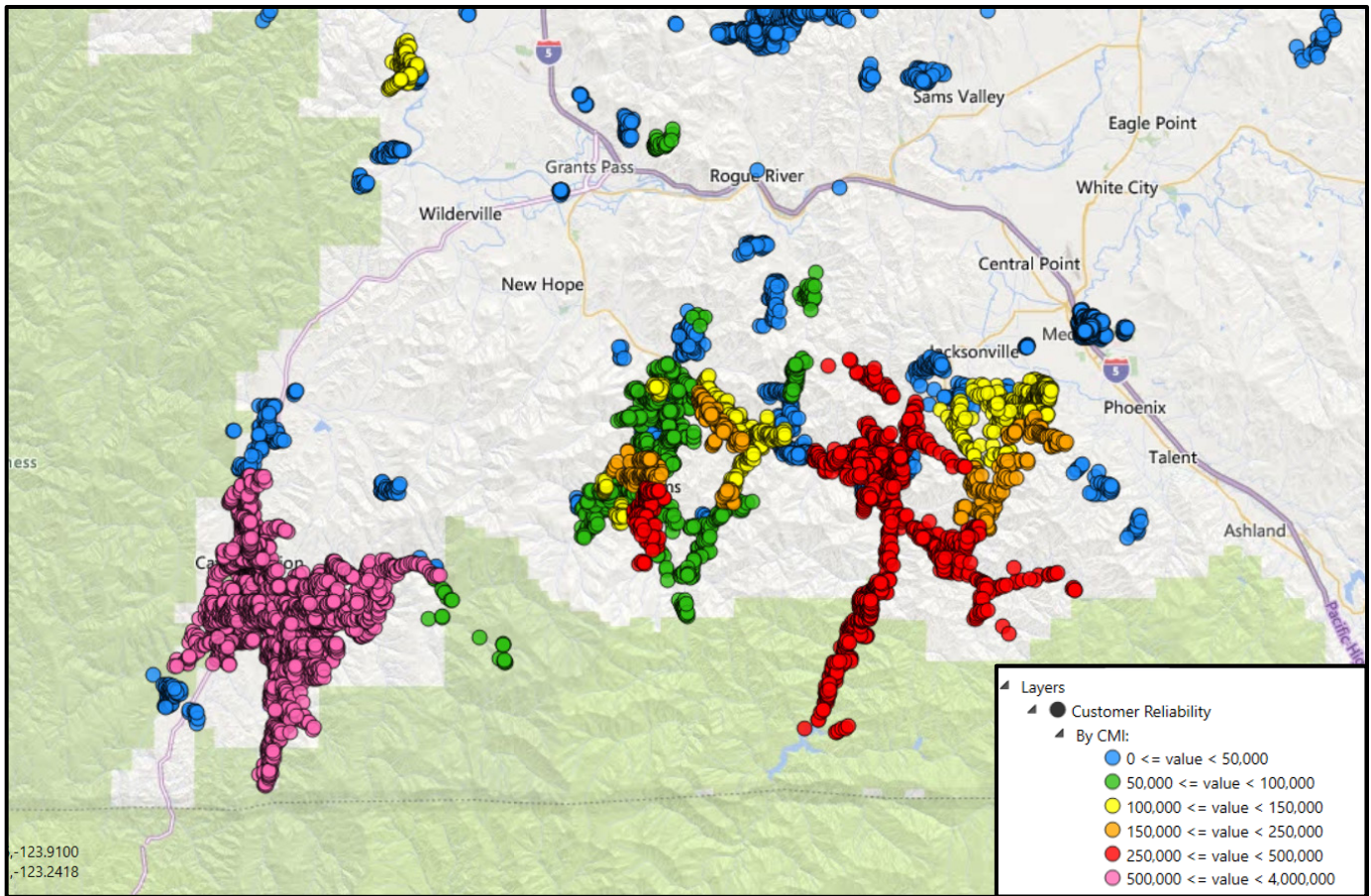
On February 28, an unusually strong winter storm impacted the Pacific Northwest affecting several districts including the Grants Pass and Medford areas in Southern Oregon. Strong winds began on February 27. Two periods of snowfall occurred overnight on February 28 to March 1

and again the evening of March 1 to March 2, resulting in scattered to widespread outages in Roseburg, Grants Pass, and Medford service districts of Oregon. Snow totals ranged from 1 inch in valleys to as high as 2 feet in high elevation spots. The storm system cleared by Monday, March 4.

Oregon CML March 1 at 12:40 to March 5 at 15:41



Southern Oregon CML March 1 at 12:40 to March 5 at 15:41



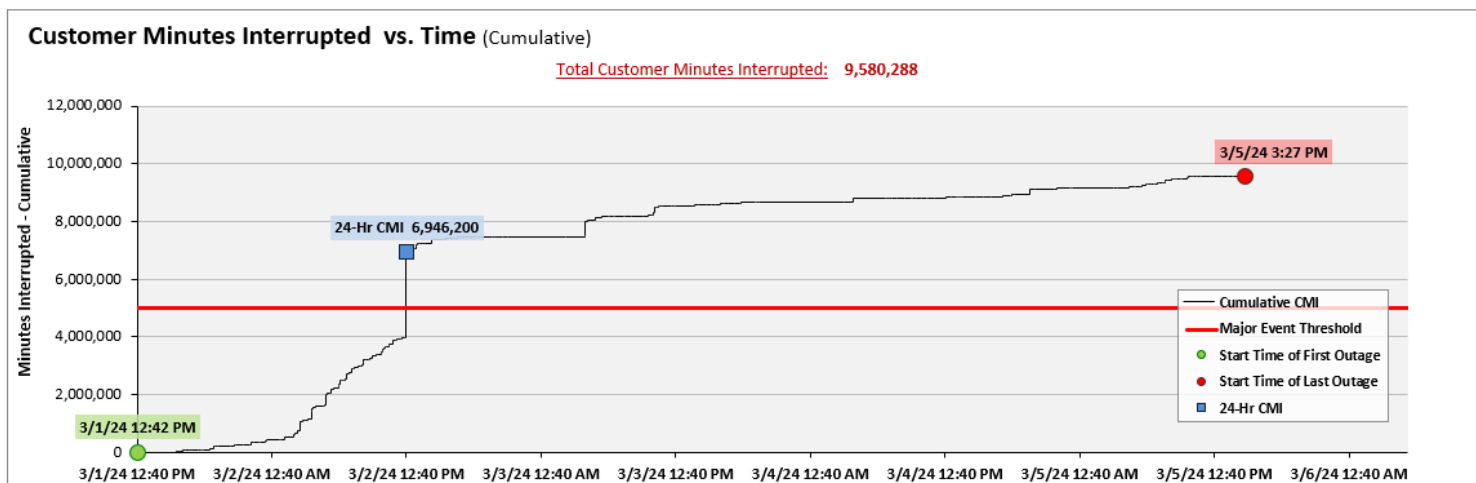
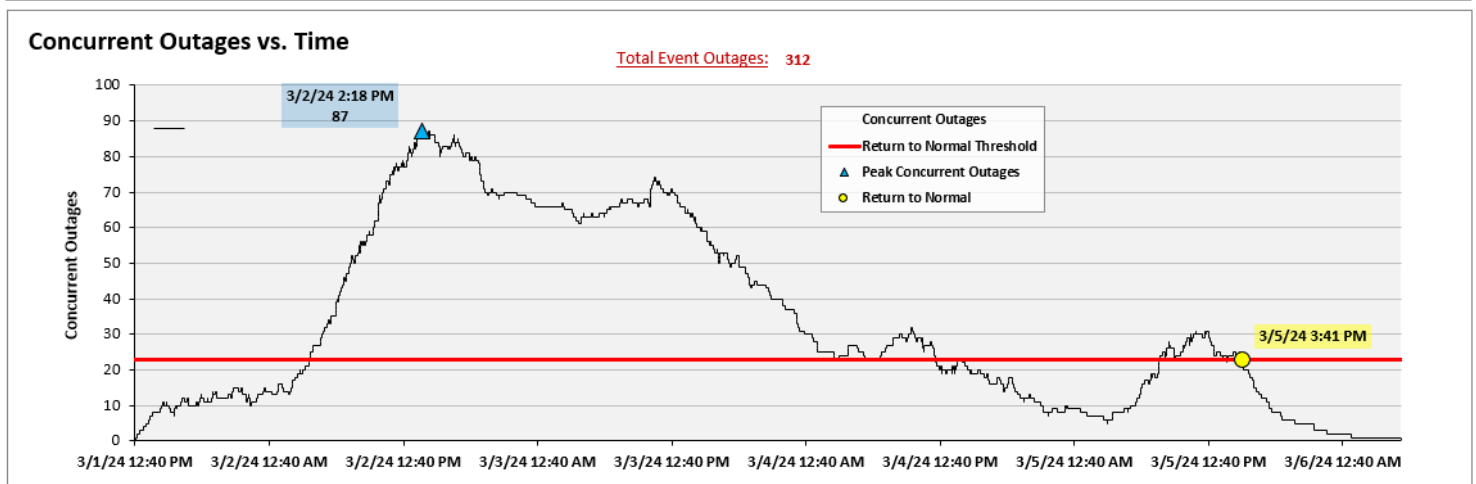
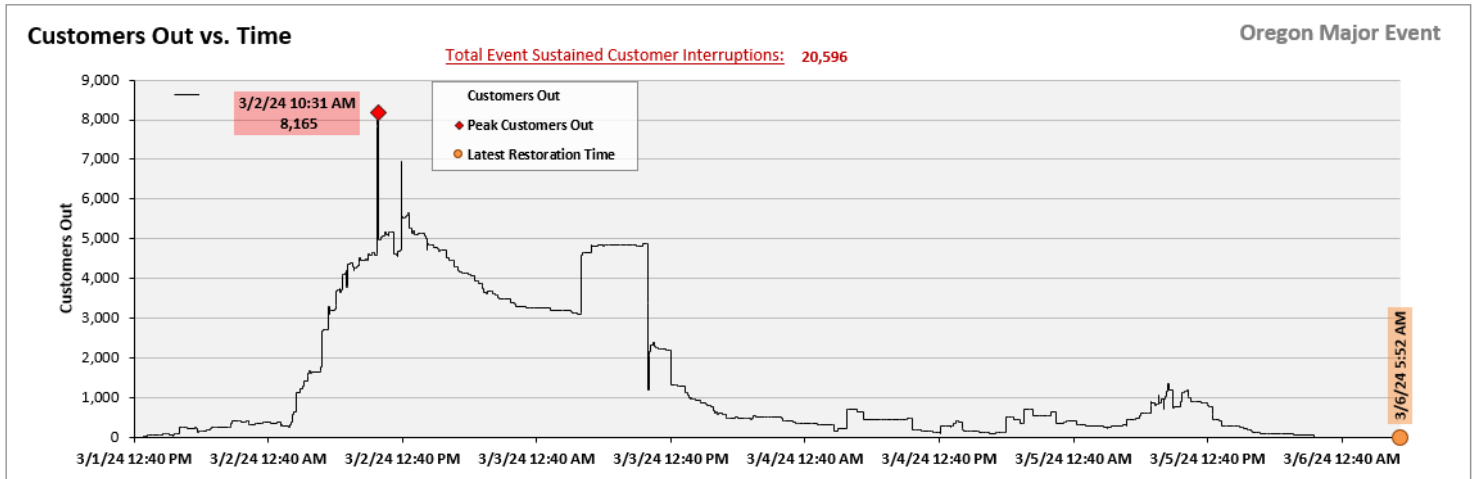
Restoration Intervals

Total Customer Sustained Outage Events	< 3 Hrs.	3 – 24 Hrs.	24+ Hrs.
20,596	7,635	12,281	680

Major Event Declaration

PacifiCorp designates these events and the consequences thereof a major event in accordance with OAR 860-023-0161. This is a major event because it exceeded the design or operating limits of the system, and the Major Event Threshold for Oregon as calculated annually by the company according to IEEE 1366-2022 methodology (commonly referred to as the 2.5 beta method). The company’s 2024 Oregon reliability threshold is 4,984,779 customer minutes lost, excluding EFR, (7.81 Oregon SAIDI minutes) in a 24-hour period.

Event Details



SAIDI, SAIFI, CAIDI by Reliability Reporting Region

Please see the attached system-generated reports.

PacifiCorp Major Event Report
Customer Analysis

	Oregon	Customer Analysis 3/1/2024 through 3/5/2024					Customers Restored by Intervals								Major Event Only - metric by operating area customer counts		
		Sustained Customers Off	% Sustained Customers Off	CML	Number of Sustained Interruptions	Customer Count	< 5 min	5 min - 3 hrs	3 hrs - 24 hrs	24 hrs - 48 hrs	48 hrs - 72 hrs	72 hrs - 96 hrs	96 + hrs	% Sustained Customers Restored in 3 Hours PS4	SAIDI	SAIFI	CAIDI
	PacifiCorp Major Events Report Customer Analysis*																
PC	PACIFICORP	22,521	1%	9,689,842	328	2,089,798	9,319	9,451	12,390	635	45	-	-	42%	4.64	0.011	430
PP	Pacific Power	22,521	3%	9,689,842	328	823,337	9,319	9,451	12,390	635	45	-	-	42%	11.77	0.027	430
OR	Oregon	22,521	4%	9,689,842	328	638,000	9,319	9,451	12,390	635	45	-	-	42%	15.19	0.035	430
OR	ALBANY	374	1%	45,526	5	33,763	-	333	41	-	-	-	-	89%	1.35	0.011	122
OR	BEND/REDMOND	29	0%	2,905	4	73,738	-	29	-	-	-	-	-	100%	0.04	0.000	100
OR	CLATSOP (ASTORIA)	517	2%	122,925	7	25,652	-	220	297	-	-	-	-	43%	4.79	0.020	238
OR	COOS BAY/COQUILLE	574	2%	77,260	12	26,459	-	532	42	-	-	-	-	93%	2.92	0.022	135
OR	CORVALLIS	161	1%	40,531	3	30,477	-	69	92	-	-	-	-	43%	1.33	0.005	252
OR	COTTAGE GROVE/J.CITY	6	0%	2,778	1	11,634	-	-	6	-	-	-	-	0%	0.24	0.001	463
OR	DALLAS/INDEPENDENCE	2	0%	78	2	16,594	-	2	-	-	-	-	-	100%	0.00	0.000	39
OR	ENTERPRISE	32	1%	5,364	2	5,732	-	27	5	-	-	-	-	84%	0.94	0.006	168
OR	GRANTS PASS	10,056	19%	6,497,903	141	52,698	1,045	2,468	7,187	356	45	-	-	25%	123.30	0.191	646
OR	HERMISTON	1	0%	186	1	5,307	-	-	1	-	-	-	-	0%	0.03	0.000	186
OR	HOOD RIVER	1	0%	156	1	9,728	-	1	-	-	-	-	-	100%	0.02	0.000	156
OR	KLAMATH FALLS	743	2%	195,639	7	38,281	-	41	702	-	-	-	-	6%	5.11	0.019	263
OR	LEBANON	12	0%	3,324	3	21,683	-	1	11	-	-	-	-	8%	0.15	0.001	277
OR	LINCOLN CITY	2	0%	290	1	12,547	-	2	-	-	-	-	-	100%	0.02	0.000	145
OR	MADRAS	2	0%	722	2	18,455	-	1	1	-	-	-	-	50%	0.04	0.000	361
OR	MEDFORD	8,546	9%	2,424,003	108	92,175	8,264	4,730	3,537	279	-	-	-	55%	26.30	0.093	284
OR	PORTLAND	-	0%	-	-	86,798	10	-	-	-	-	-	-	0%	-	-	-
OR	ROSEBURG/MYRTLECREEK	1,462	3%	270,177	27	43,986	-	994	468	-	-	-	-	68%	6.14	0.033	185
OR	STAYTON	1	0%	78	1	14,029	-	1	-	-	-	-	-	100%	0.01	0.000	78

*Only current event specific metric impact shown. Does not include values from other events which may have occurred in other regions during the same time period.

Data as of
3/12/2024

PacifiCorp Major Event Report

SSC by State Analysis

	Oregon	Event 03/01/24 through 03/05/24						Month 03/01/24 through 03/31/24						YTD FY2025 01/01/24 through 03/31/24					
		Major Events Included			Major Event Excluded			Major Events Included			Major Events Excluded*			Major Events Included			Major Events Excluded*		
	PacifiCorp Major Events Report SSC by State	SAIDI	SAIFI	CAIDI	SAIDI	SAIFI	CAIDI	SAIDI	SAIFI	CAIDI	SAIDI	SAIFI	CAIDI	SAIDI	SAIFI	CAIDI	SAIDI	SAIFI	CAIDI
PC	PACIFICORP	14.19	0.048	297	1.18	0.009	135	15.92	0.072	222	2.91	0.033	89	90.44	0.284	319	18.55	0.144	129
PP	Pacific Power	15.49	0.045	341	2.18	0.016	136	19.02	0.088	217	5.71	0.058	98	190.68	0.467	409	27.92	0.183	153
OR	Oregon	17.52	0.052	335	2.33	0.017	137	20.84	0.096	218	5.66	0.060	94	233.16	0.482	483	28.55	0.171	167
OR	ALBANY	0.07	0.001	122	-	-	-	0.24	0.001	197	0.16	0.001	269	2.10	0.019	109	0.87	0.005	183
OR	BEND/REDMOND	0.01	0.000	103	0.00	0.000	122	0.01	0.000	100	0.00	0.000	100	1.89	0.011	174	0.72	0.006	118
OR	CLATSOP (ASTORIA)	0.20	0.001	238	0.00	0.000	228	0.20	0.001	237	0.00	0.000	215	8.12	0.035	230	1.24	0.005	244
OR	COOS BAY/COQUILLE	0.12	0.001	134	0.00	0.000	113	0.57	0.019	30	0.45	0.018	25	2.91	0.038	76	2.25	0.034	67
OR	CORVALLIS	0.06	0.000	252	-	-	-	0.17	0.001	182	0.11	0.001	157	11.26	0.062	181	0.39	0.005	76
OR	COTTAGE GROVE/J.CITY	0.00	0.000	463	-	-	-	0.00	0.000	303	0.00	0.000	62	80.90	0.041	1,957	0.66	0.003	252
OR	DALLAS/INDEPENDENCE	0.00	0.000	122	0.00	0.000	139	0.00	0.000	59	0.00	0.000	60	7.58	0.018	419	0.12	0.001	168
OR	ENTERPRISE	0.01	0.000	168				0.01	0.000	163	0.00	0.000	30	0.23	0.002	117	0.14	0.001	100
OR	GRANTS PASS	11.04	0.017	640	0.85	0.001	578	11.79	0.031	379	1.60	0.015	104	15.12	0.044	341	4.55	0.027	170
OR	HERMISTON	0.02	0.000	527	0.02	0.000	542	0.02	0.000	483	0.02	0.000	494	0.10	0.000	241	0.09	0.000	246
OR	HOOD RIVER	0.01	0.000	106	0.01	0.000	104	0.14	0.001	190	0.14	0.001	190	1.12	0.006	202	1.06	0.005	220
OR	KLAMATH FALLS	0.31	0.001	263	-	-	-	0.33	0.004	93	0.03	0.002	11	5.14	0.014	369	3.65	0.011	339
OR	LAKEVIEW	-	-	-	-	-	-	0.00	0.000	252	0.00	0.000	252	0.02	0.000	65	0.02	0.000	65
OR	LEBANON	0.01	0.000	277	-	-	-	0.29	0.003	112	0.29	0.003	111	42.93	0.037	1,162	1.33	0.007	184
OR	LINCOLN CITY	0.16	0.001	135	0.16	0.001	135	0.16	0.001	135	0.16	0.001	135	10.20	0.030	337	1.82	0.014	127
OR	MADRAS	0.00	0.000	360	0.00	0.000	359	0.02	0.000	146	0.02	0.000	140	0.19	0.001	144	0.19	0.001	144
OR	MEDFORD	4.93	0.027	184	1.13	0.013	85	5.08	0.027	186	1.28	0.014	92	11.25	0.044	256	6.16	0.026	234
OR	PENDLETON	-	-	-	-	-	-	0.00	0.000	79	0.00	0.000	79	0.02	0.000	138	0.02	0.000	128
OR	PORTLAND	-	-	-	-	-	-	0.05	0.000	184	0.05	0.000	184	25.30	0.051	500	0.46	0.005	91
OR	ROSEBURG/MYRTLECREEK	0.58	0.003	182	0.16	0.001	175	1.34	0.005	282	0.91	0.002	373	3.57	0.016	218	2.14	0.010	210
OR	STAYTON	0.00	0.000	73	0.00	0.000	68	0.43	0.002	260	0.43	0.002	260	3.18	0.011	293	0.67	0.004	181
OR	WALLA WALLA	-	-	-	-	-	-	0.00	0.000	68	0.00	0.000	68	0.04	0.000	182	0.01	0.000	221

*may include other regional major event exclusions during the same period. Operating areas are calculated by the state frozen customer count metrics.

Data as of
3/12/2024