

2024

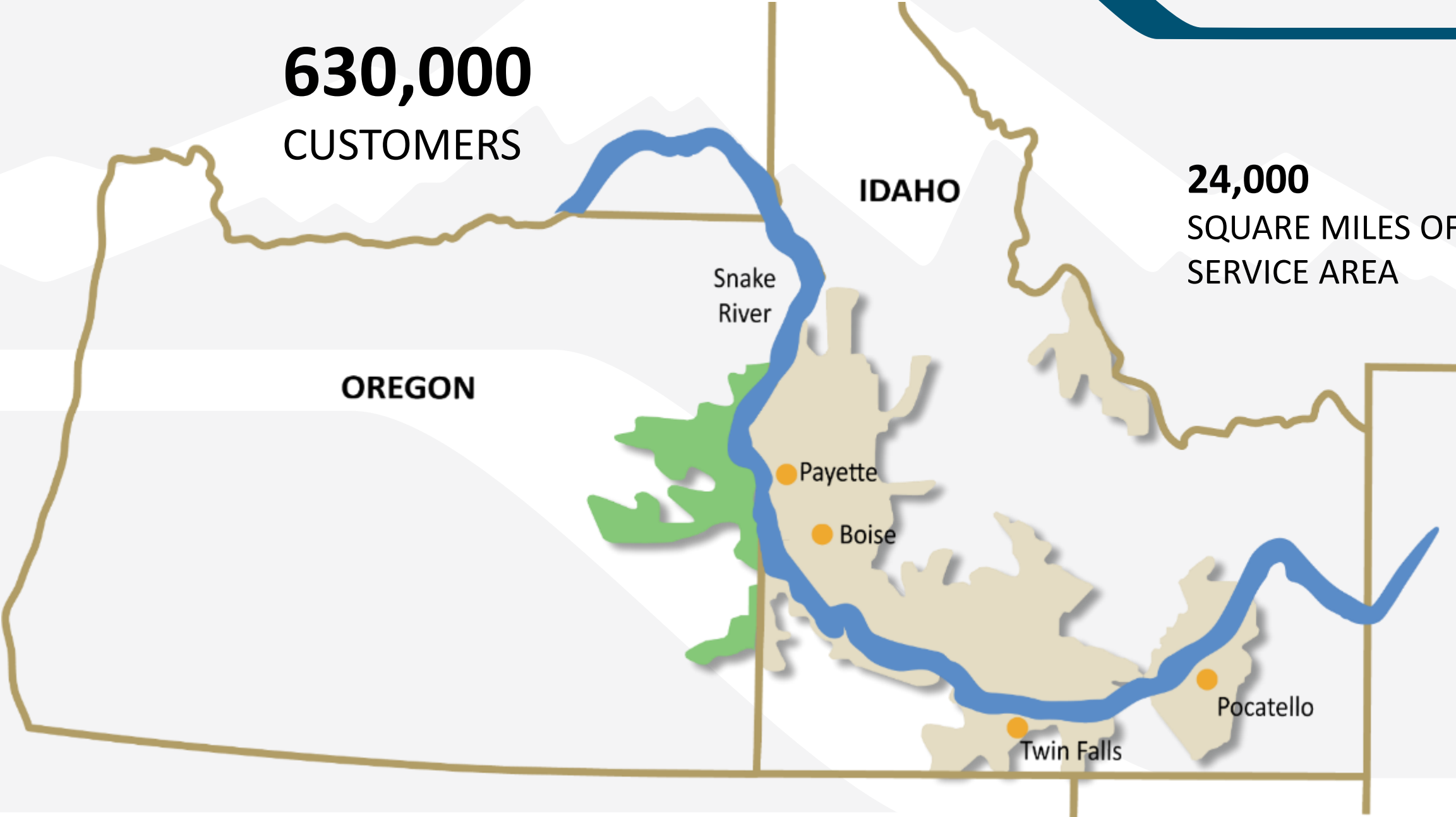
Wildfire Mitigation Plan

Jon Axtman, *Senior Manager
Transmission and Distribution
Engineering and Reliability*

Dani Southard, *Wildfire
Mitigation Program Manager*

630,000
CUSTOMERS

24,000
SQUARE MILES OF
SERVICE AREA



AGENDA

- Our Approach to Wildfire Mitigation
- Update to Baseline Risk Modeling
- Wildfire Mitigation Zones
- Key Achievements
- Oregon Project Highlights
- Communications and Outreach
- New Developments
- 2024 Wildfire Season Readiness





Wildfire Mitigation Plan

Approach

Idaho Power deploys a multi-pronged approach to achieve its wildfire mitigation objectives. The company's activities and actions are focused on:

- 1) Reducing the likelihood of wildfire
- 2) Reducing the intensity of wildfire
- 3) Reducing the susceptibility of wildfire

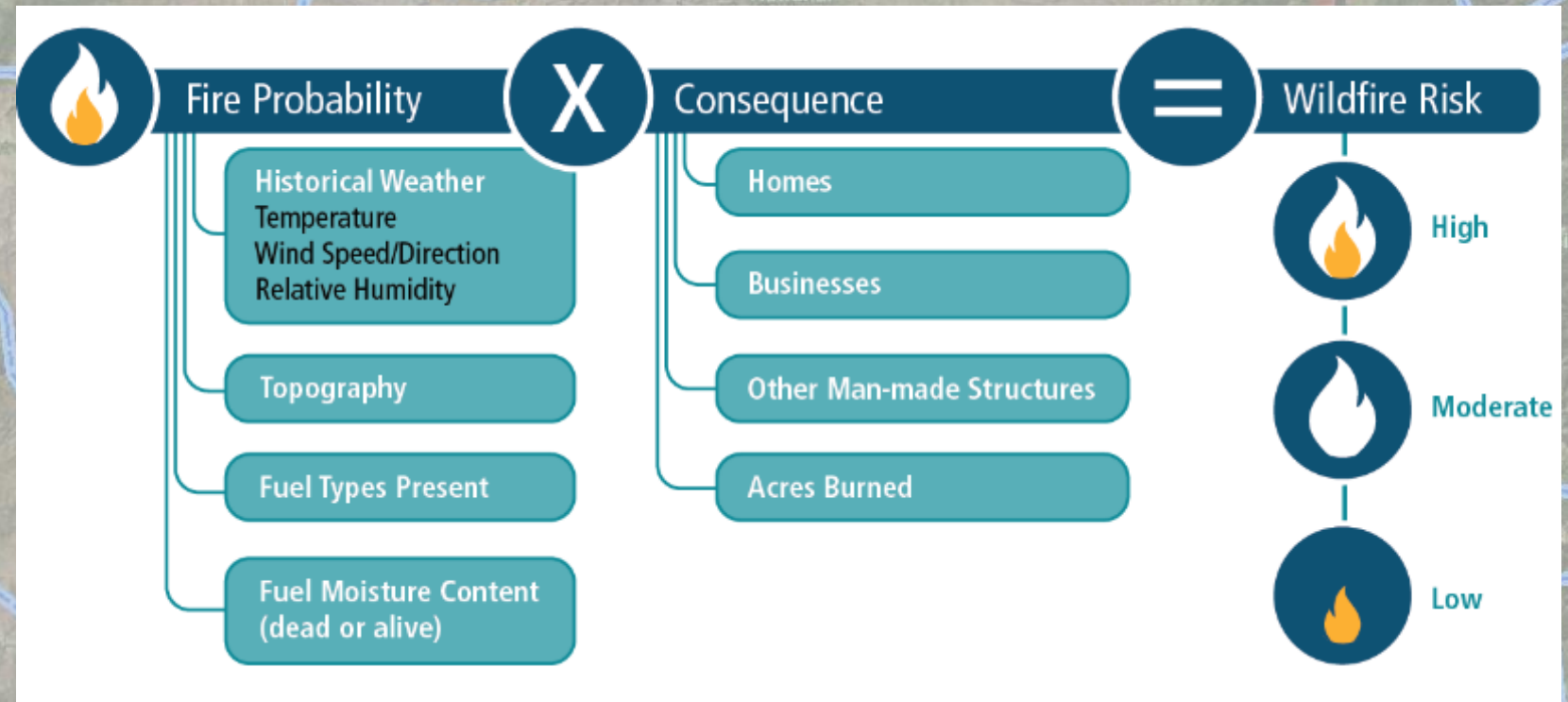




Baseline Wildfire Risk Mapping

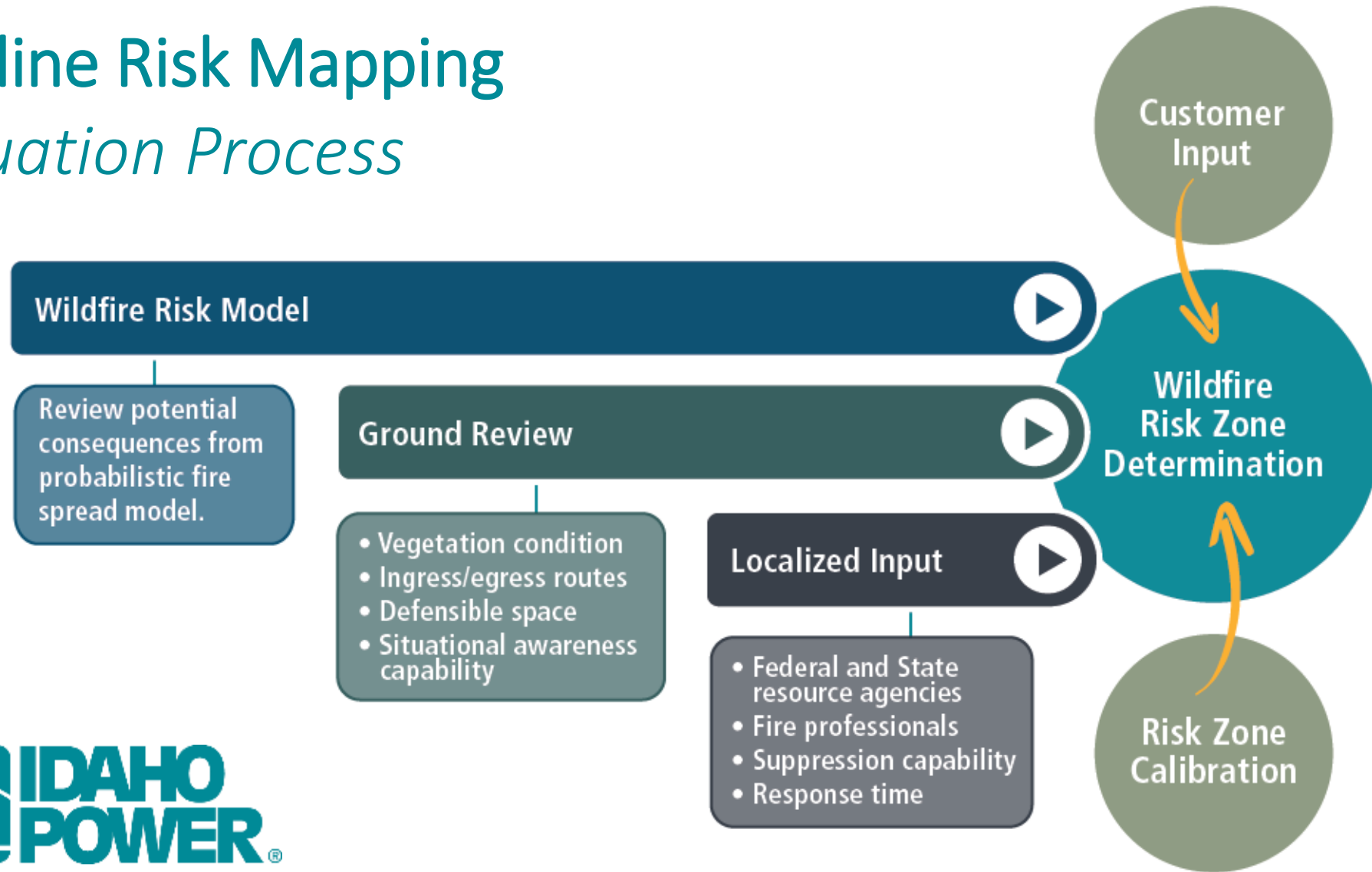
2023 Model Updates

- New Climatology Datasets
- Updated Idaho Power Infrastructure & Outage Information
- Updated Structural Data
- New Vegetation Classification (LANDFIRE 2.3.0)



Baseline Risk Mapping

Evaluation Process

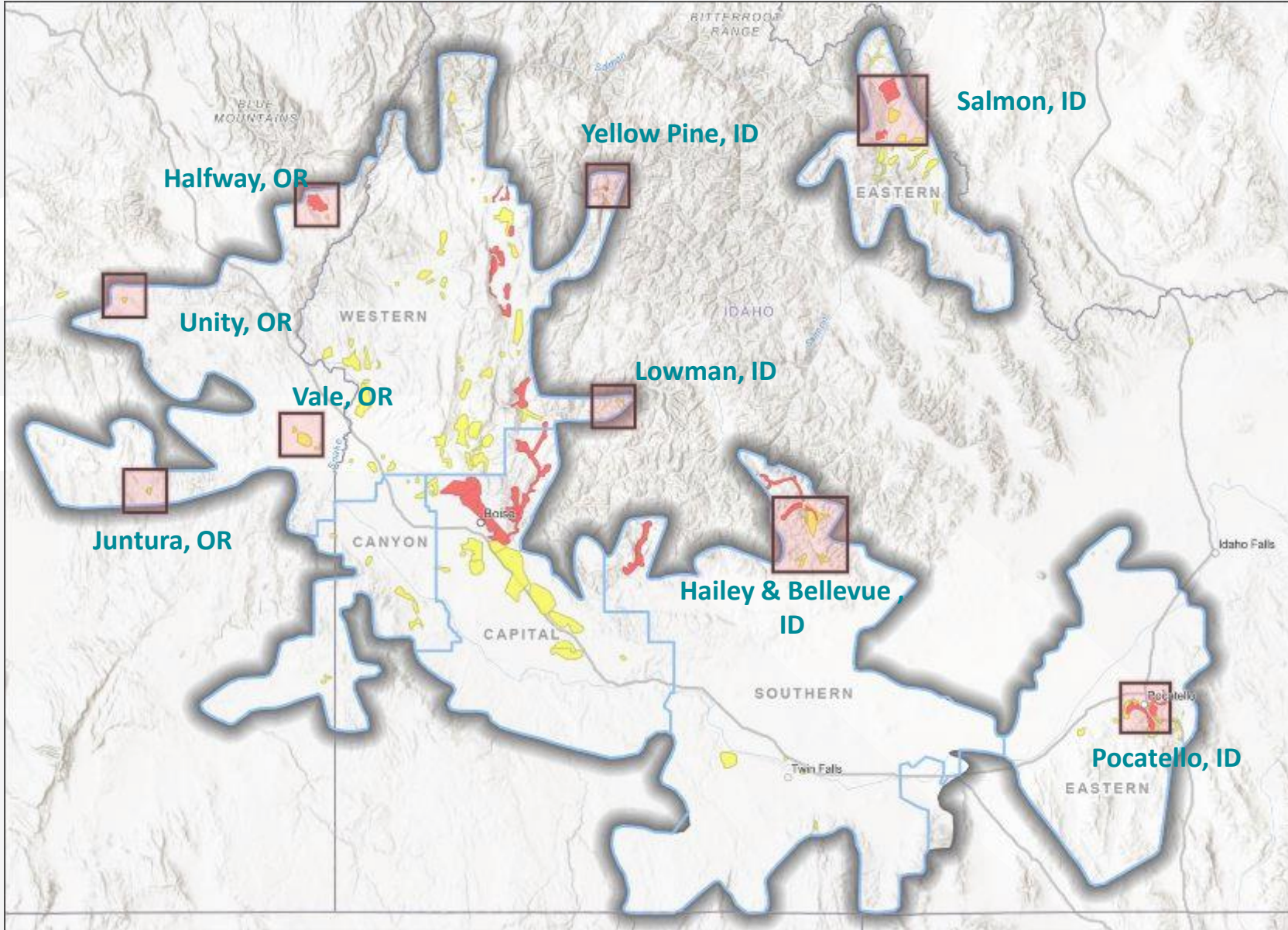


Notable Input to WMP and Risk Zone Updates

- Oregon Fire Departments and Rural Fire Protection Districts including: Vale, Unity, La Grande, and Halfway
- Bureau of Land Management (BLM) Fire and Natural Resource Professionals (Oregon and Idaho)
- Emergency Managers for Baker, Malheur, and Union counties
- U.S. Forest Service (Idaho)
- Oregon Department of Forestry
- Idaho Department of Lands
- Oregon State Fire Marshal



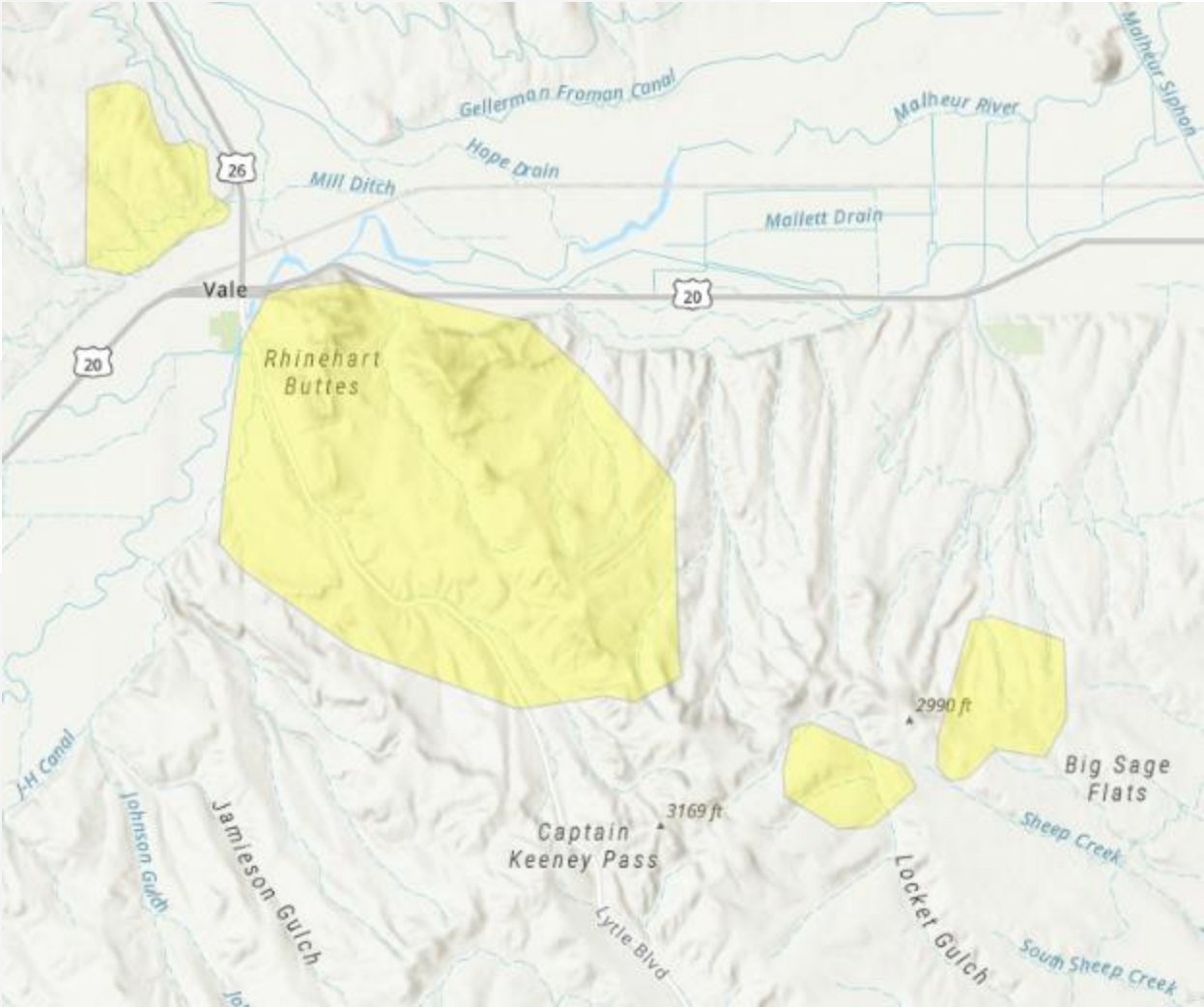
2024 Wildfire Risk Zones



Zone Changes

State	New Tier 2 Zone	New Tier 3 Zone	Zone elevated from Tier 2 to Tier 3
Oregon	3	1	
Idaho	2	-	6
Totals	5	1	6

Oregon Wildfire Risk Zones



Vale, OR

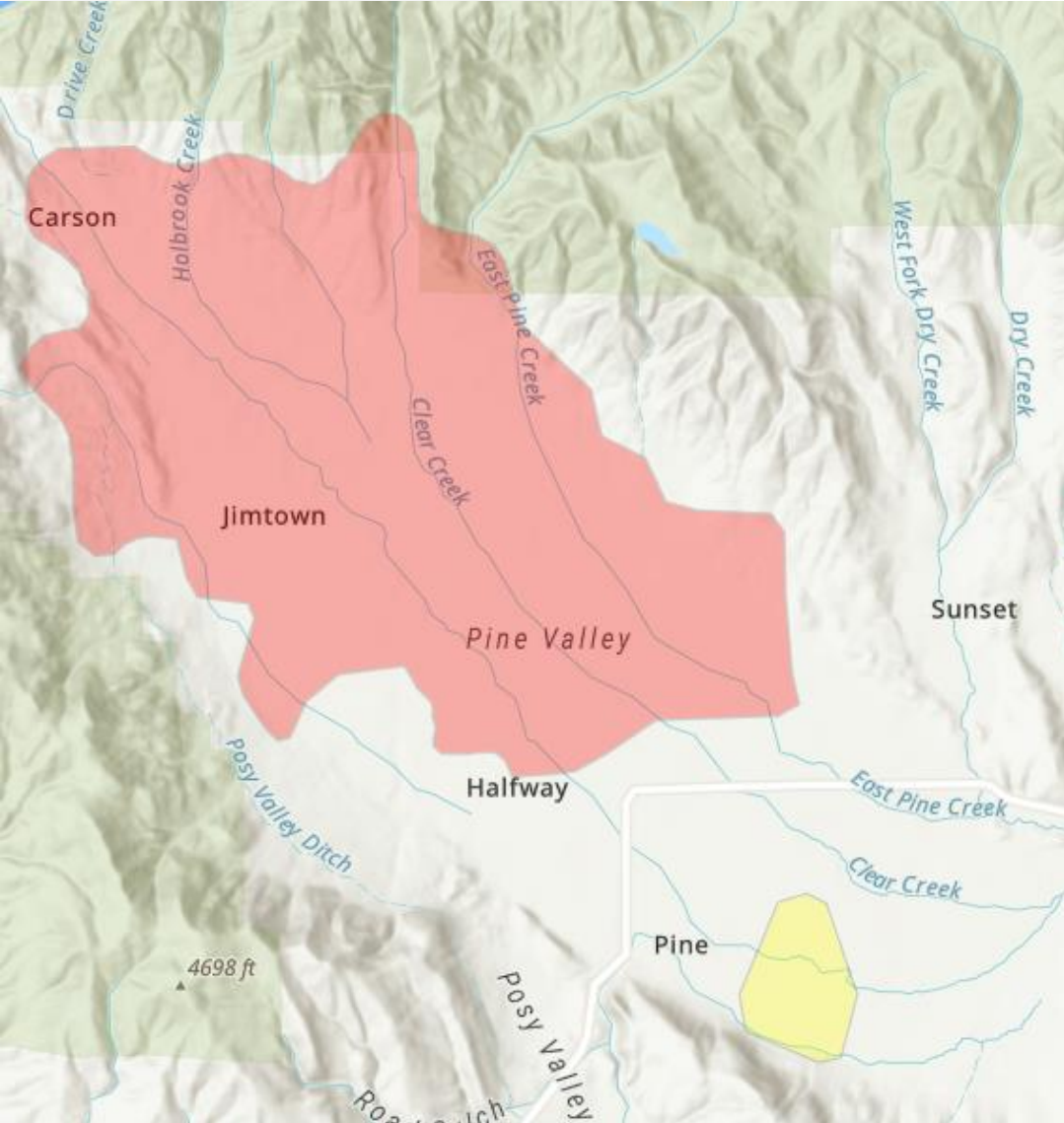


Jordan Valley, OR

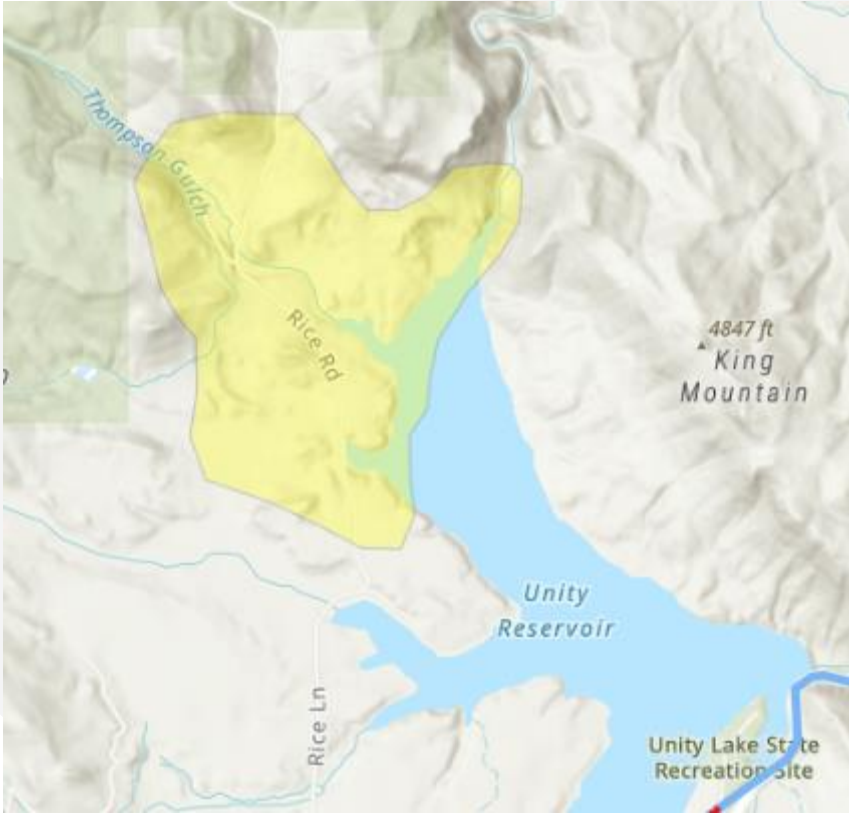


Juntura, OR

Oregon Wildfire Risk Zones

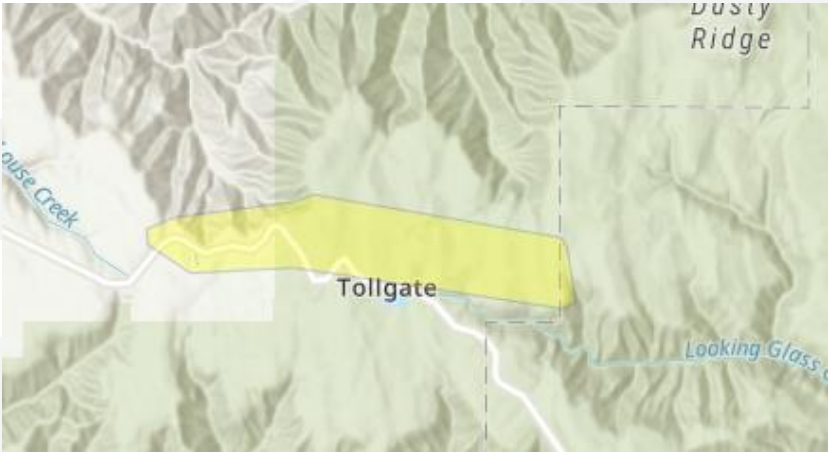


Halfway, OR

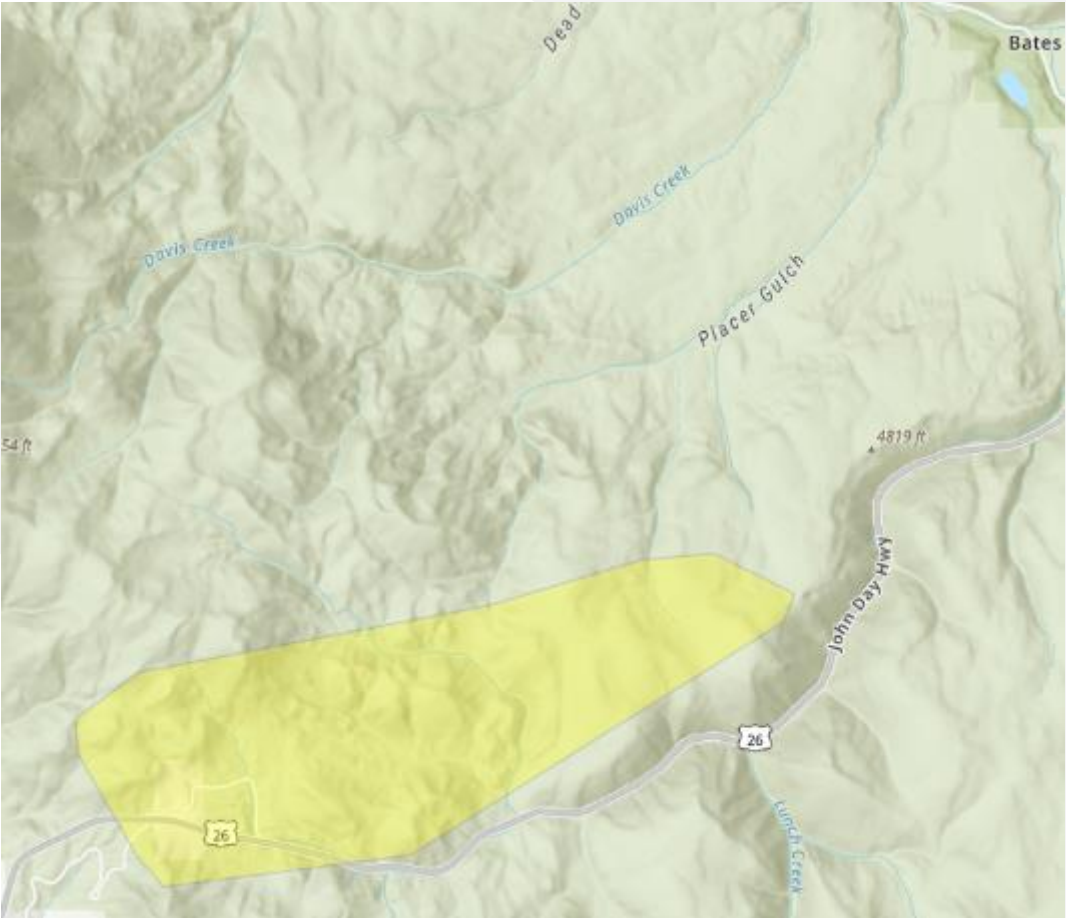


Unity, OR

Oregon Wildfire Risk Zones



Tollgate, OR



John Day Highway (near Austin Junction), OR



Grid Hardening

The Grid Hardening Program was expanded by 40% from 2022 to 2023, resulting in the **hardening of 69 new line miles across Idaho Power's Tier 3 zones.**

The 2024 goal includes completion of an **additional 74 line miles**

Segmentation

In 2023, as part of an effort to isolate circuit segments, Idaho Power installed **eight automatic reclosing devices in Tier 3 zones.**

In 2024, Idaho Power plans to install an **additional 25 automatic reclosing devices** in Tier 2 and Tier 3 wildfire risk zones throughout the service area.

The company is also working to **improve remote communication capabilities to distant segmentation devices**

KEY Achievements in 2023

Idaho Power **met or exceeded all of its WMP goals** within the company's wildfire risk zones





Enhanced Vegetation Management

Idaho Power completed all planned enhanced vegetation management activities in wildfire risk zones, including annual patrols and mid-cycle pruning.

The company piloted additional monitoring tools in 2023, such as the use of a LiDAR-based approach for vegetation encroachment detection.

The company continues to make progress toward the long-term goal of achieving a three-year pruning cycle across its entire service area.

Asset Inspections

In 2023, Idaho Power met or exceeded its established goals for WMP asset inspections.

Asset inspection initiatives include condition-based aerial visual inspections, ground visual inspections, detailed visual inspections (generally using high resolution photography), thermography inspections, and wood pole inspection and treatment.

KEY Achievements in 2023

Idaho Power met or exceeded all of its WMP goals within the company's wildfire risk zones



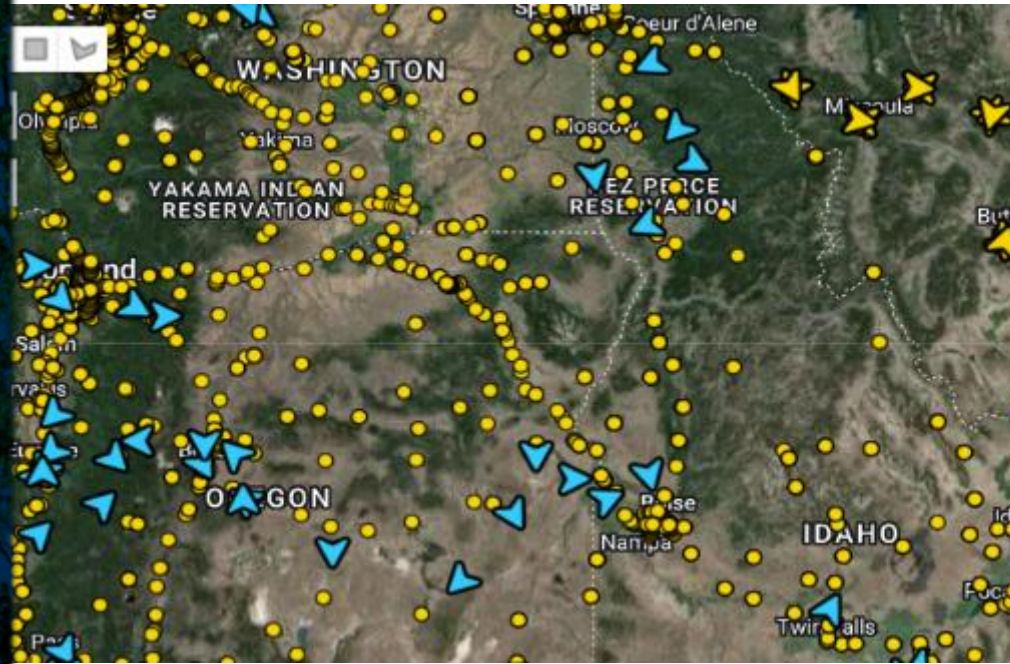
WMP References: Section 4.5 Costs & Benefits of Wildfire Mitigation, Section 8. Mitigation Initiatives

Wildfire Detection Cameras

Idaho Power is a participant of Oregon Wildfire Detection Camera Interoperability Committee.

The company is collaborating with agencies in Idaho for wildfire camera buildout planning

Idaho Power has six planned installations with ALERTWest across the service area in 2024



Weather Station Installations

Five fire weather stations were installed in 2023 with an additional five planned for 2024.

Idaho Power is evaluating installation of broader weather station network

Situational Awareness

KEY Achievements in 2023

Idaho Power **met or exceeded all of its WMP goals** within the company's wildfire risk zones



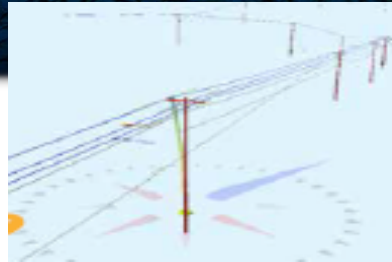
Covered Conductor

Training yard evaluation completed in 2023 advancing to field trial in Idaho



Pole Loading

Notable results in 2023, evaluating expansion of the pilot into 2024



Shared Stewardship

Cross-boundary fuel reduction project on Boise and Payette National Forest associated with the Forest Service's National Wildfire Crisis Strategy



2023 WMP Pilot Initiatives

Research



Validate



Operationalize

Idaho Power uses pilot initiatives to evaluate technology or new solutions to mitigate risk



WMP References: Section 4.5 Costs & Benefits of Wildfire Mitigation, Section 8. Mitigation Initiatives

Oregon Project Highlights

Huntington to Quartz Transmission Line Rebuild

- Transmission line rebuild from the Huntington Substation to the Quartz Substation in eastern Oregon
- Transmission line was originally built in 1951
- Rebuilding with tubular steel 138 kilovolt (kV) H-frame structures with shield wire and optical fiber composite overhead ground wire for lightning protection
- Project began in July 2023 and is scheduled for completion in December 2024



Oregon Project Highlights

Vale to Drewsey Transmission Line Maintenance

- Transmission line maintenance project from the Vale Substation to the Drewsey Substation
- Originally built in 1947
- Idaho Power's wildfire team worked with the BLM Vale District in 2023 to clear backlogged Idaho Power requests to complete maintenance
- There were 134 structure replacements in 2023
- An additional 447 structures are scheduled for replacement in 2024

Transmission Fire Mesh Wrap

- 205 wood poles were wrapped in Oregon in 2023



WMP Communications

Idaho Power communicates with employees, customers, government officials, the public, and other stakeholders before and throughout wildfire season.

Connections

How Idaho Power Protects the Grid — and You Can Too

Idaho Power customers experienced less damage in recent wildfire seasons than many of our neighbors, but not everyone still recognizes our mission to protect the way of wildfire and protect the grid. At the same time, we're working hard to protect the way of wildfire and protect the grid. We're working hard to protect the way of wildfire and protect the grid.

Wildfires are almost twice as common as our service area as they were 40 years ago," said Jim Archer, Transmission and Distribution Engineering and Reliability Senior Manager. "The way we're doing it is an important part of Idaho Power's mission to give the grid the best protection possible in the face of extreme weather conditions. The outage is a not a resort measure."

Plan Now for Your Unique Outage Needs — Just in Case!

While there are some basic preparations that can help everyone, it's especially important for you to think through your individual needs.

- If you or your family members have special medical needs, such as refrigerated medicines or electrically powered medical equipment, make a plan for what you will do if you are not able to get to a hospital or clinic. This could include making a plan for how you will get to a hospital or clinic.
- If you depend on well pumps for water, have extra water and oil stored on hand for livestock water if needed.
- Know how to manage your own and your family's safety during a wildfire. Make sure you have a fire escape plan and practice it. Make sure you have a fire escape plan and practice it.

Can We Reach You During an Outage?

If your power goes out, we'll do our best to get you back online as quickly as possible. We'll also try to get you back online as quickly as possible.

Update Your Contact Information

If you already have a My Account online, go to [Manage Contact Information](#) and update it with your phone number and email address.

Don't have My Account yet? Visit [idaho.com/myaccount](#) to get started. You can also call us at 1-800-464-4332.

Sign Up for Outage Alerts

When you're in My Account, sign up for outage alerts to be notified any time an outage is expected in your service area. You can also sign up for alerts when you're in a power outage. We'll send you a text message or email when we're back online.

Download Our App

The Idaho Power mobile app is a free download from any app store to track power outages, report power outages, and more. It's available on the App Store and Google Play.

Fire season is coming.

Scenarios, wildfires cause power outages. Here are some ways you can protect:

- Use fire-resistant landscaping
- Redwood or cedar fences
- Use fire-resistant materials

Can We Reach You During an Outage?

If your power goes out, we'll do our best to get you back online as quickly as possible. We'll also try to get you back online as quickly as possible.

Update Your Contact Information

If you already have a My Account online, go to [Manage Contact Information](#) and update it with your phone number and email address.

Don't have My Account yet? Visit [idaho.com/myaccount](#) to get started. You can also call us at 1-800-464-4332.

Sign Up for Outage Alerts

When you're in My Account, sign up for outage alerts to be notified any time an outage is expected in your service area. You can also sign up for alerts when you're in a power outage. We'll send you a text message or email when we're back online.

Download Our App

The Idaho Power mobile app is a free download from any app store to track power outages, report power outages, and more. It's available on the App Store and Google Play.

Thunderstorms Today

Convective Wind gusts 35 to 50 mph
Isolated storms producing damaging winds 58+ mph

Impacts:

Isolated trees and branches down as power lines unbalanced outdoor furniture will potentially become airborne.

Impacts:

Isolated wind debris. Choppy and hazardous boating conditions.

US National Weather Service Missoula Montana

Spring to where thunderstorms will develop today along a Pacific coast front. Probability of convective outflow winds exceeding 45 mph extended this afternoon... See more

Approaches to customer communication and outreach include public events, meetings, social media, radio, flyers, postcards, letters, and voice and text messaging.

WMP Communications

Core messages and topics include:



- Idaho Power's commitment to safety
- Wildfire prevention tips for customers
- Wildfire mitigation efforts at Idaho Power
- PSPS considerations and impacts
- Emergency and outage preparedness tips and checklists
- Where to find outage information
- Importance of updating contact information

Idaho Power
July 27, 2022

Hot weather and wildfire season are here. Sometimes, wildfires lead to power outages. Be wildfire ready with a summer outage kit. Get started using our list, available at idahopower.com/wildfire.

Be wildfire ready



Build a summer outage kit.



Idaho Power
July 5, 2023

Tomorrow is National Wildfire Community Preparedness Day, and every summer, wildfires are a threat to our homes, businesses, farms and forests. They can also cause power outages. Here are some ways to keep you and your family from getting caught off guard in a summer outage, regardless of the cause.

For more tips, visit <https://bit.ly/5NDCvfc>. #PrepDay

Fire season is coming.

Sometimes, wildfires cause power outages. Here are some ways you can prepare:

-  Plan for needs like refrigerated medicine or powered medical equipment.
-  Find a way to water livestock in case pumps lose power.
-  Update your contact information at idahopower.com/contactupdate.

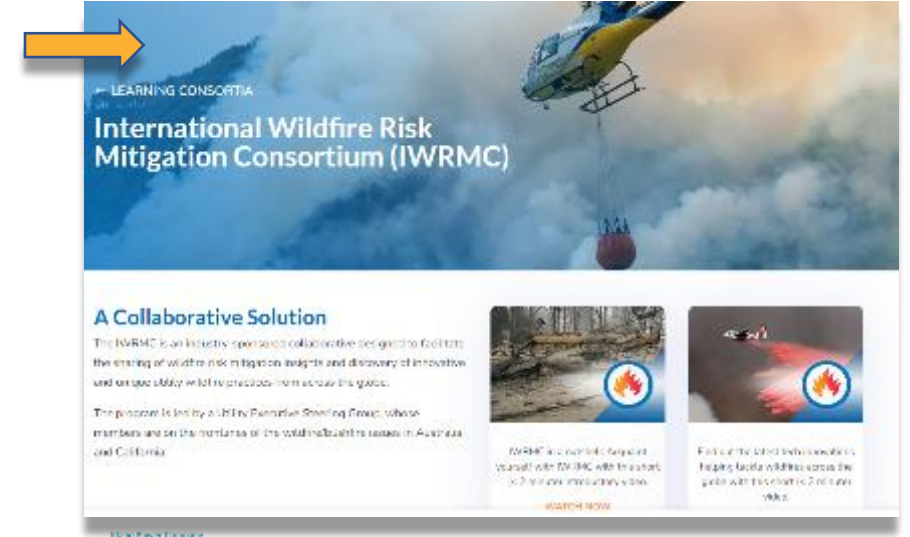
For more information, visit idahopower.com/wildfire.



2024 WMP Developments: Engagement, Outreach & Communications



Idaho Power participates in more than **25 ongoing forums for wildfire mitigation** that span across industry, government, and fire science fields. These engagements support the company's commitment to gaining knowledge of emerging mitigation approaches and inform the continuous improvement of Idaho Power's WMP.



In 2023, the company conducted more than 30 WMP and Public Safety Power Shutoff (PSPS) plan presentations. **The 2024 plan aims to significantly expand outreach efforts** to include public meetings in each county where a wildfire risk zone exists.

Wildfire Mitigation Plan 2024

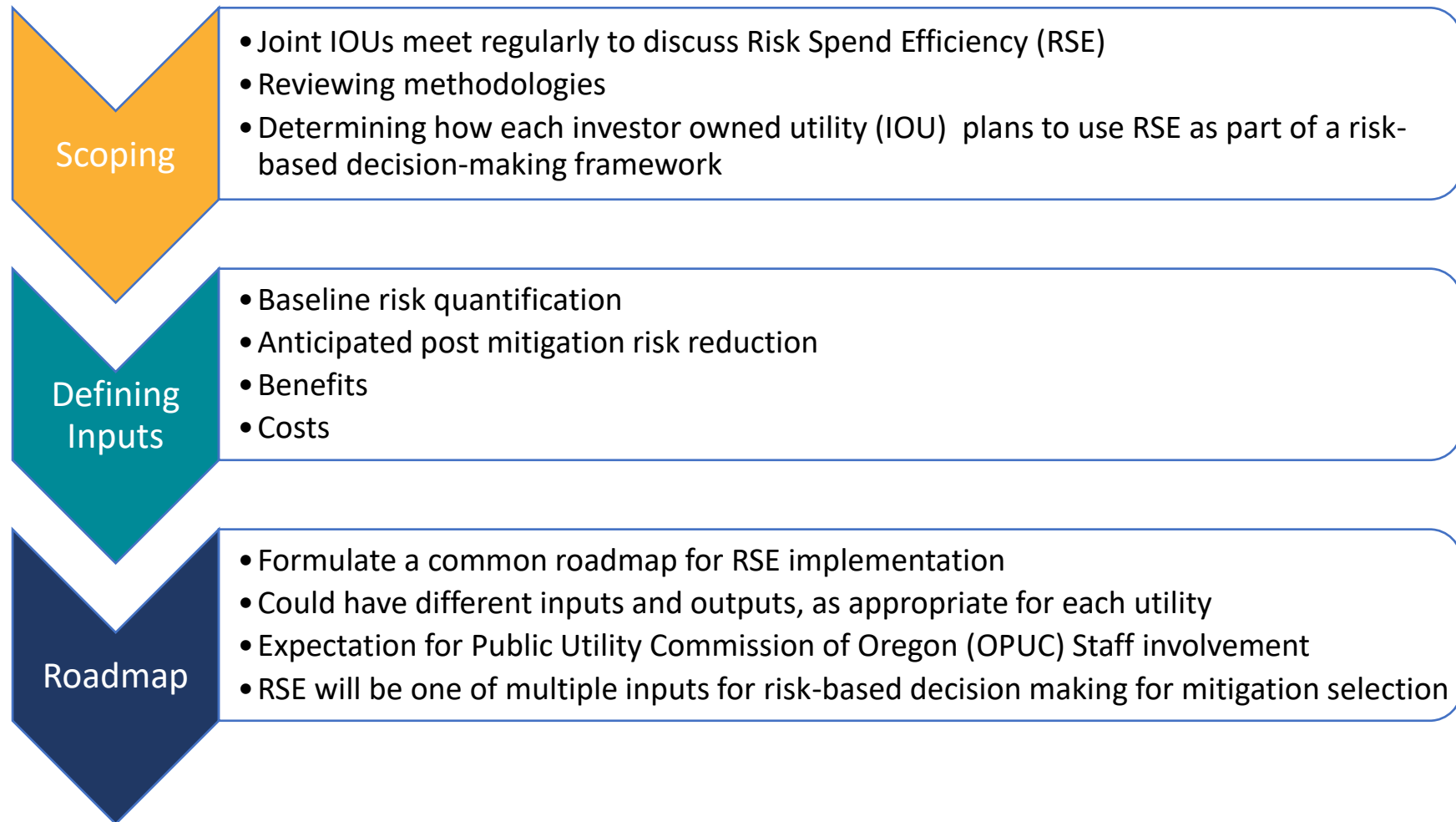
Table 38
Key communication metrics

Metric	Definition	Current Status	2024 Goal	2023 Results	Considerations for Future
Public Meetings	Number of public meetings held for wildfire mitigation planning.	25	30	25	Expand outreach efforts to include public meetings in each county where a wildfire risk zone exists.
Public Safety Power Shutoff (PSPS) Plan Presentations	Number of PSPS plan presentations held for customers.	30	30	30	Continue to provide clear and concise information to customers regarding PSPS plans.
Customer Outreach	Number of customer outreach activities, including door-to-door visits and community events.	100	100	100	Continue to engage with customers through various channels to ensure they are informed and prepared.
Emergency Preparedness	Number of emergency preparedness activities, including drills and training sessions.	50	50	50	Continue to provide training and resources to help customers prepare for emergencies.
Community Engagement	Number of community engagement activities, including town hall meetings and public forums.	10	10	10	Continue to engage with the community to gather feedback and build trust.
Stakeholder Engagement	Number of stakeholder engagement activities, including meetings with government agencies and industry partners.	10	10	10	Continue to collaborate with stakeholders to address shared concerns and improve wildfire mitigation efforts.

The **2024 plan incorporates a new Key Metrics** section that discusses success criteria, 2023 results, and considerations for future communications and outreach efforts.

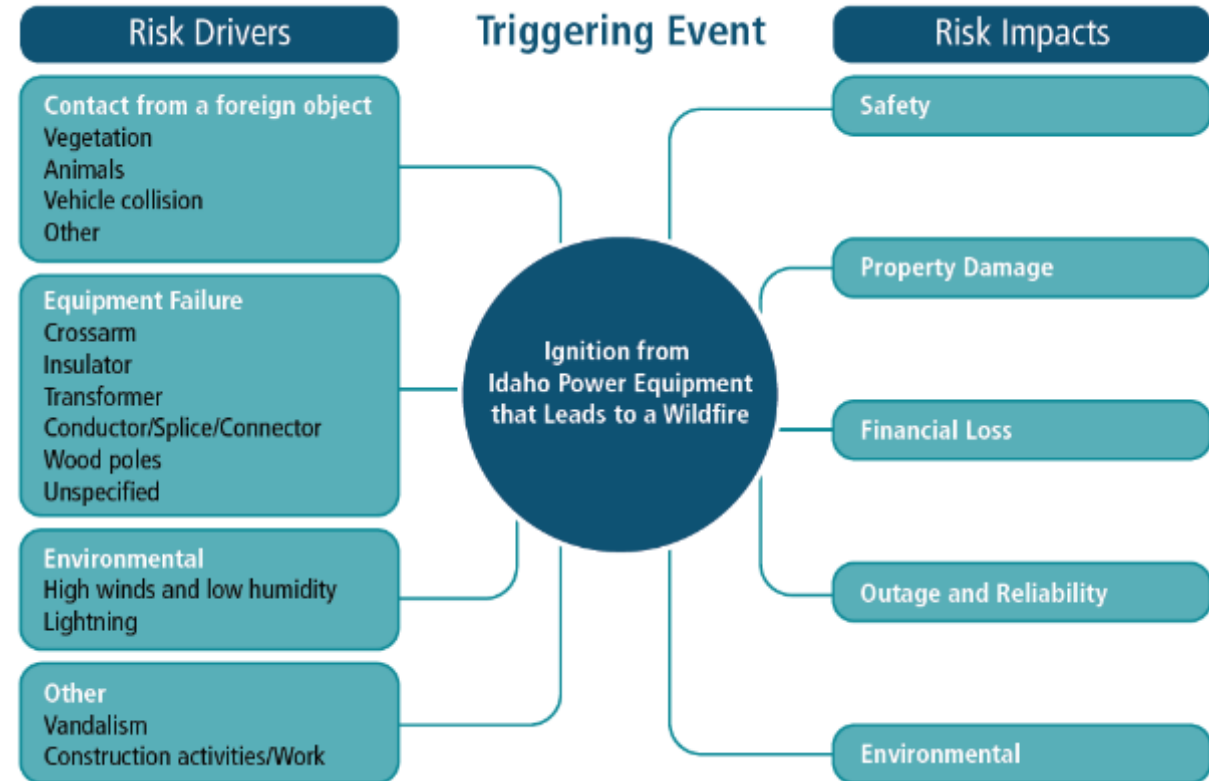
* WMP References: Section 2. Government, Industry, and Peer Utility Engagement, Section 10. Communicating About Wildfire

2024 WMP Developments: Engagement with Oregon IOUs toward a common RSE framework

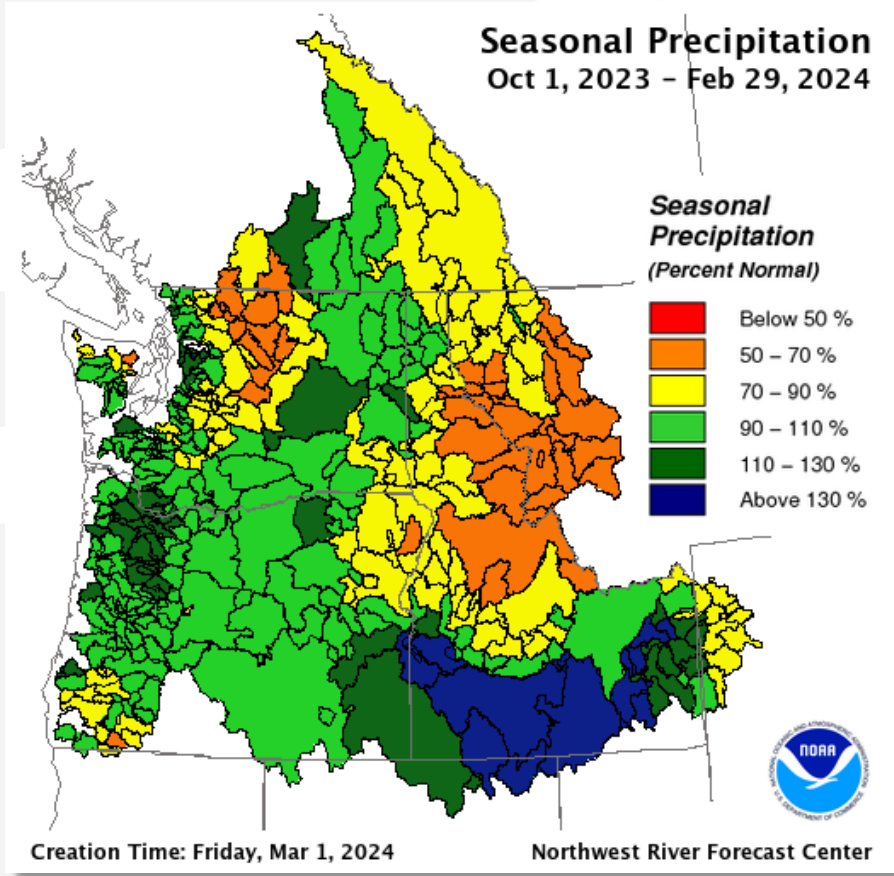


2024 WMP Developments: Ignition Tracking and Analysis

- Refinement of risk drivers, risk impacts, and mitigation solutions
- Development of preliminary probabilistic operational risk models to inform likelihood of occurrence
- Roadmap for advancing ignition tracking and analysis capabilities



Wildfire Season Readiness



In southern Idaho and eastern Oregon, precipitation has been near to above normal for the water year (October through February) to date.

Seasonal Outlook for Idaho Power Service Area

- ❖ Fire activity remains low in the Great Basin due to the time of year with shorter daytime hours, fuels in dormancy, and cold frontal passages bringing cooler temperatures, higher humidity, and precipitation.
- ❖ Fire activity is expected to remain low and normal for the time of year through April and pick up in May and June from south to north, exhibiting normal trends.
- ❖ There is a potential for upticks in fire potential on windy days in areas that have prolonged dryness and above normal grass crops in the lower elevations, depending on weather conditions.

Wildfire Season Readiness



- Creating PSPS switching plans for all wildfire risk zones
- Training Idaho Power field teams on Wildland Fire Preparedness and Prevention Plan
- Expanding outreach and public engagement activities to all counties with wildfire risk zones
- Coordination with adjacent utilities
- Initiate fire weather forecasting in May (FPI generation)

Western Region	06/12 12:00	06/12 18:00	06/13 00:00	06/13 06:00	06/13 12:00	06/13 18:00	06/14 00:00	06/14 06:00	06/14 12:00	06/14 18:00	06/15 00:00	06/15 06:00	06/15 12:00	06/15 18:00
WPS1	4	3	3	3	5	3	3	3	6	6	5	5	6	5
WPS2	3	3	3	3	3	3	3	3	7	6	4	4	5	4
Capital Region	06/12 12:00	06/12 18:00	06/13 00:00	06/13 06:00	06/13 12:00	06/13 18:00	06/14 00:00	06/14 06:00	06/14 12:00	06/14 18:00	06/15 00:00	06/15 06:00	06/15 12:00	06/15 18:00
CPS1	3	3	3	4	5	3	3	4	6	5	5	5	6	6
CPS2	4	3	3	3	4	3	3	3	7	6	5	5	6	6
Southern Region	06/12 12:00	06/12 18:00	06/13 00:00	06/13 06:00	06/13 12:00	06/13 18:00	06/14 00:00	06/14 06:00	06/14 12:00	06/14 18:00	06/15 00:00	06/15 06:00	06/15 12:00	06/15 18:00
SPS1	7	7	5	6	6	6	5	5	8	7	7	7	8	7
Eastern Region	06/12 12:00	06/12 18:00	06/13 00:00	06/13 06:00	06/13 12:00	06/13 18:00	06/14 00:00	06/14 06:00	06/14 12:00	06/14 18:00	06/15 00:00	06/15 06:00	06/15 12:00	06/15 18:00
EPS1	9	7	7	7	7	7	7	7	10	10	8	10	10	10
EPS2	8	7	7	7	7	7	7	7	10	10	9	10	10	9
EPS3	9	7	7	7	8	7	7	7	10	10	10	10	10	11
EPS4	8	6	6	6	7	6	6	6	9	9	9	9	9	10

Wildland Fire Preparedness and Prevention Plan



Enhanced Protection Settings (EPS)

Working to expand protection capabilities

- Seasonal change – non reclose
- Decrease time delay on high fire potential days

Continue segmentation projects with recloser installs and communication

Our goal is to ensure that PSPS is only used as a last resort



Public Safety Power Shutoff (PSPS)

PSPS Considerations



High Temperature



Low Humidity



High Winds



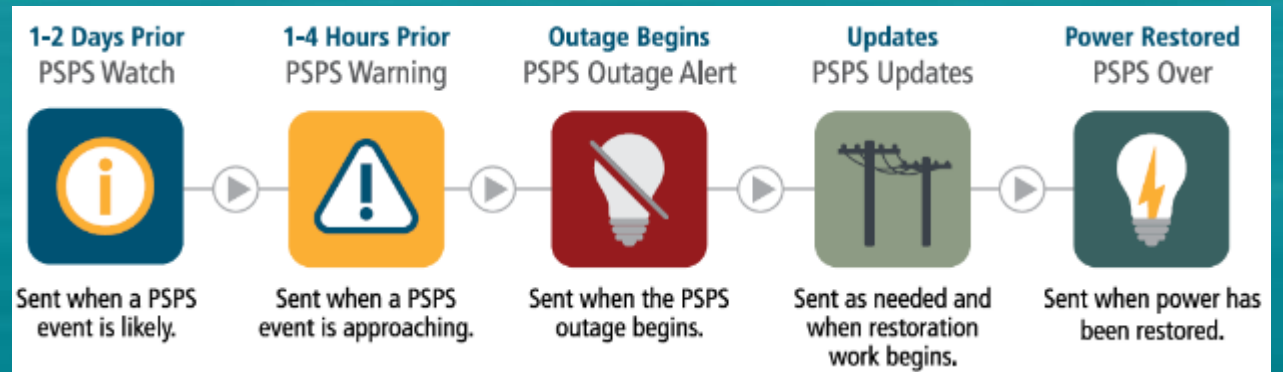
Dry Vegetation



Public Safety

- Annual functional exercise (May 6th)
- Outage Playbook guides activities
- Idaho Power deploys field observers as needed
- Assessment team monitors conditions
- Ongoing engagement and communication
 - Public safety partners
 - Critical facilities
 - Customers

PSPS: Stages of Customer Communication



Idaho Power will provide as much advance notification as the event allows

Upcoming Oregon Public Meeting and Event Schedule

- Halfway Public Safety Fair- February 28th 3-6pm (complete)
- Vale, Malheur County – May 2nd, 6-8pm Vale Senior Center
- Jordan Valley, Malheur County – May 15th, 6-8pm Jordan Valley Lions Hall
- Nyssa, Malheur County– May 16th, 6-8pm Nyssa High School
- Homedale, Owyhee County (ID) May 22nd 6-8pm Homedale High School (will include Adrian OR residents)
- Unity, Baker County – May 23rd 6-8pm Burnt River High School
- Halfway, Baker County – May 29th 6-8pm Lions Club



Thank You

For more information and to
read our full WMP, please visit:

www.IdahoPower.com/wildfire