

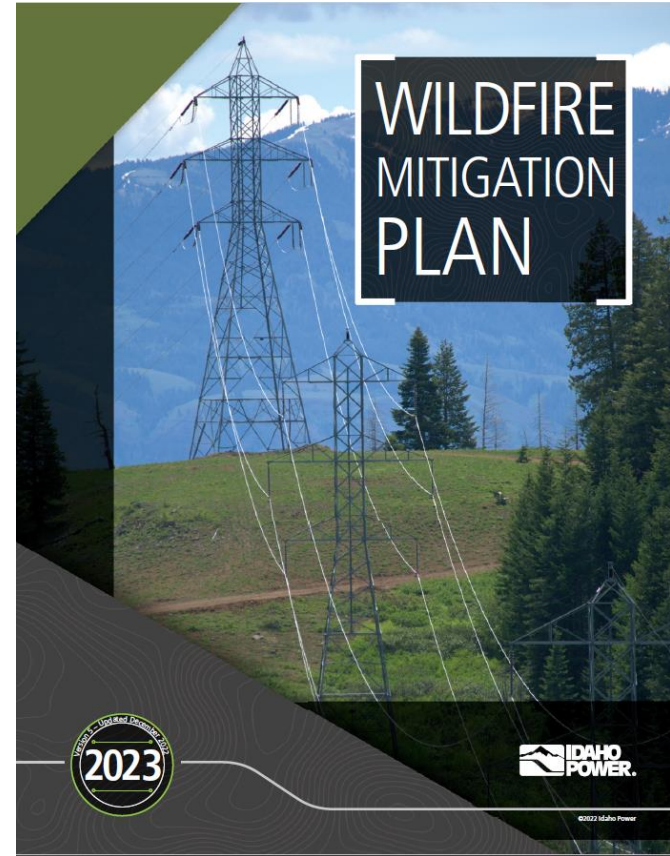
Idaho Power 2023 WMP Overview

March 14th, 2023



Agenda

- Key elements of the plan and updates
- Activities completed during 2022 and their effect on future years
- Reflections on recommendations made last year
- Key learnings and how they informed the 2023 WMP



Key Elements of the WMP

- Existing Sections
 - Objectives and background
 - Engagement strategy
 - Quantifying wildland fire risk
 - Cost benefits of wildfire mitigation
 - Situational awareness
 - Operations and protection strategy
 - Mitigation programs
 - Wildfire response
 - Communication
 - Performance monitoring and metrics
 - Appendix A – Wildfire Preparedness and Prevention Plan
 - Appendix B – Public Safety Power Shutoff
- New for 2023
 - Executive Summary
 - Fire potential in 2022
 - Impacts of wildfires
 - Progress and activity summary
 - Lessons learned
 - Call out boxes
 - Industry and peer engagement
 - Risk modeling updates
 - Risk framework
 - Public Safety Partner feedback
 - Communication summary
 - Advanced technologies
 - Appendix C – Oregon requirements and recommendations



Summary of Changes for 2023

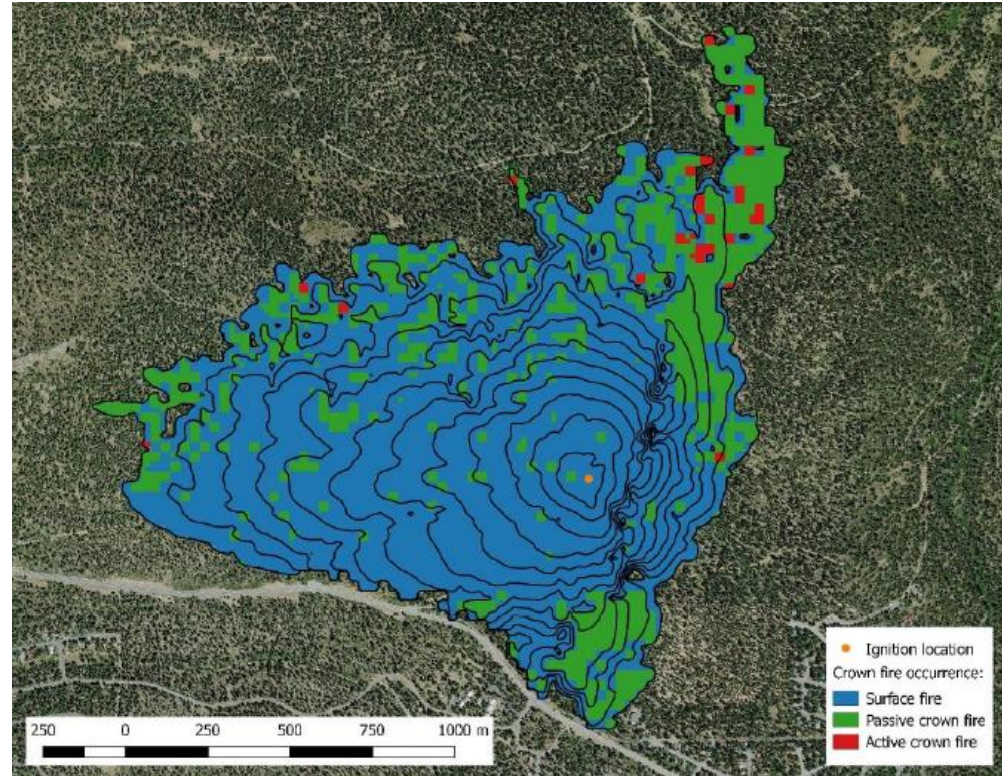


- Executive Summary
- Oregon update included in appendix
 - Staff's recommendations
- Re-perform risk modeling
- Evaluating new technology
- Improve metrics and performance measures
- Strategic undergrounding initiative
- Adjustment to FPI forecasting zones
- Adjust pre-fire season inspection requirements



Risk Modeling

- Reconduct risk modeling
 - 2020 Census data
 - Suppression difficulty
 - Chinook winds
 - Fire history
 - Land use
 - Cattle/ranch
 - Reassessment will continue to include B2H
- Engage with fire agencies

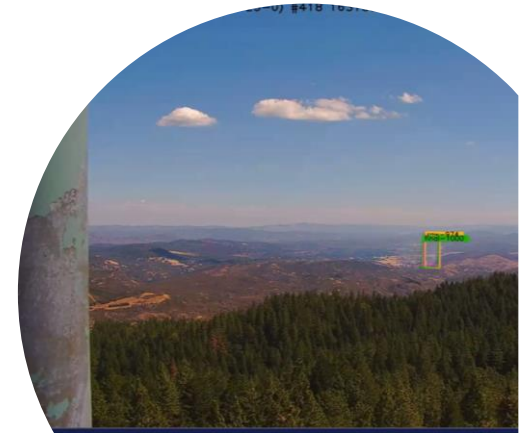
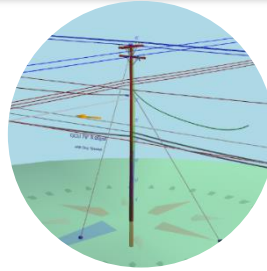


Example of fire spread simulation for individual fire ignition



Technology and Innovation

- Satellite Imagery
 - Identify vegetation encroachment and hazard trees
- Fuel Treatments
 - Working with federal agencies to reduce fuels in the Boise National Forest
- Covered Conductor
 - Trialing conductor that is insulated
- Fire Detection Cameras
 - Trialing cameras to detect the start of a fire and notify first responders
- Pole Loading
 - Assessing the structural integrity of wood poles



2023 Planned Projects in Oregon

- Fire Mesh Wrap
 - Throughout Yellow Risk Zones
- Transmission line rebuild project
 - Huntington to Quartz 138 kV line
 - Approximately 40 miles
- Annual vegetation patrols
- 3-year tree pruning cycle
- Detailed asset inspections



2022 Activities Completed

- How have 2022 activities informed future planning?
 - Increasing targets in 2023
 - Asset inspections were delayed due to snow in higher elevations
 - Vegetation quality assurance audits now include utilizing other line personnel
 - Segmentation work identified need to pilot satellite communication (late consideration/not in WMP)
- First year of Public Safety Power Shutoff program
 - One near event that was canceled

Table 2
2022 WMP activity summary and results

Plan Area	Wildfire Mitigation Plan Activities	2022 Goal	Completed	% Complete	2023 Goal
System Hardening	Distribution System Hardening				
	System Hardening Line Miles	48	48.91*	102%	69
	Overhead Line Miles Converted to Underground	1.85	1.85	100%	1
	Expulsion Fuse Replacement	930	942	101%	1319
	Surge Arrester Replacement	830	839	101%	1175
Feeder Segmentation	Segmentation Devices				
	Installation or Relocation of Automatic Reclosing Devices	17	17	100%	8
Fire Mesh Installation	Transmission Fire Mesh Installation				
	Red Risk Zone Poles	492	492	100%	-
	Yellow Risk Zone Poles	406	585	144%	870
Asset Inspections	Transmission Inspections				
	Wildfire Pre-Season Patrol - Red Risk Zones (Structures)	923	923	100%	923
	Infrared Thermography Patrol (Structures)	923	923	100%	923
	Distribution Inspections				
	Wildfire Pre-Season Patrol - Red Risk Zones (Structures)	20,192	20,192	100%	20,192
Infrared Thermography Patrol - Red Risk Zones (Structures)	3,000	3,800	127%	4,000	
Vegetation Management	Pruning Cycle				
	Transition to a 3-Year Pruning Cycle (circuits)	282	173	70%**	320
	Enhanced Vegetation Management				
	Annual Patrol - Red & Yellow Risk Zones (circuits)	65	65	100%	65
	Annual Mitigation - Red & Yellow Risk Zones (circuits)	65	65	100%	65
	Mid-Cycle Patrols - Red & Yellow Risk Zones (circuits)	47	47	100%	1
	Mid-Cycle Pruning - Red & Yellow Risk Zones (circuits)	47	47	100%	1
	Hazard Trees Identified and Pruned	-	77	100%	100% of All Identified
	Hazard Trees Identified and Removed	-	49	100%	100% of All Identified
	Audits of Pruning Activities - Red & Yellow Risk Zones (worksites)	6,324	977	15%**	100% of All Identified
Meteorology	Idaho Power Weather Stations				
	Weather Station Installations	5	5	100%	5

*Excludes hardening work outside of wildfire risk zones

**Estimated year end completion



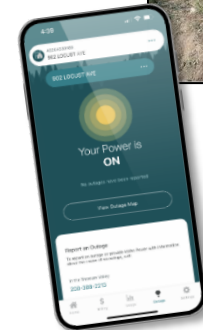
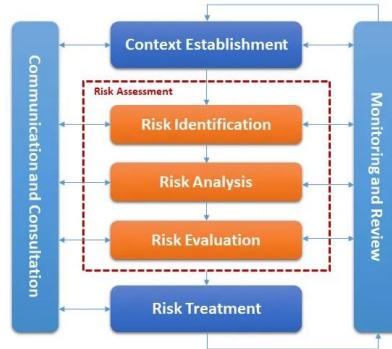
OPUC Recommendations

- Docket No. UM 2209
- Staff Recommendations from April and August 2022
 - Cost allocation
 - Risk framework
 - Staff recommendations based on IE report
- Recommendations were addressed in the 2023 WMP
- Some will take time to complete



Reflection on Recommendations Received Last Year

- Added Appendix C
- Risk framework
- Increased narratives and information
 - Risk methodology
 - Communication and outreach
 - Tables to delineate work being performed by tier level
- Details of metrics used to gauge effectiveness
- Included lessons learned
- Updated investment information



Summary of Lessons Learned

- Pre-wildfire season patrols
- Fire Potential Index
- Vegetation management
- PSPS functional exercises
 - Communication
 - Stakeholders
 - ETR
 - Field Observers
- Risk management framework
- November public meetings feedback



LESSONS
LEARNED



Community Engagement Feedback

- Timing of the meetings should coincide with fire season
- Interest in collaborating on risk maps
 - Baker county
 - Halfway
 - Unity
 - Consequence
- Partnering with Firewise
- General public
 - Happy and appreciative
 - Concerns over PSPS and risks



Questions?

Thank you!

