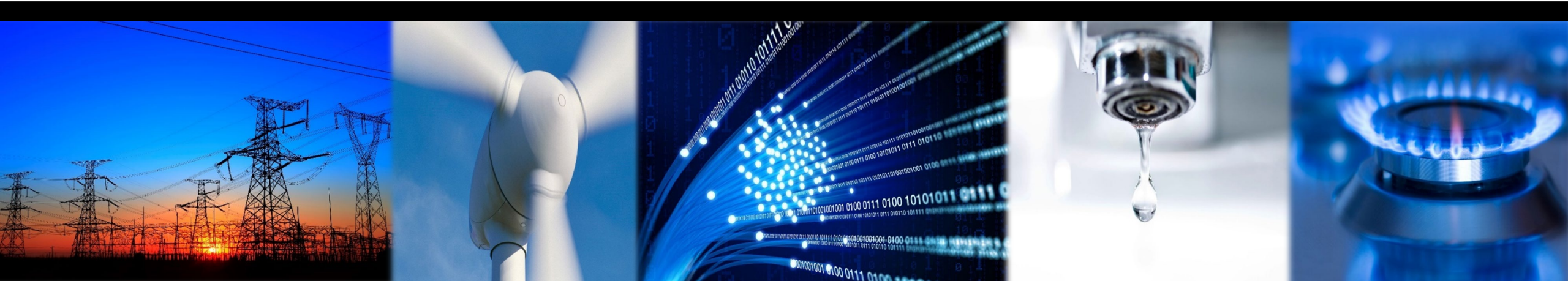




# UM 1826 2022 Utility Clean Fuels Program Plans

Eric Shierman, Senior Utility Analyst, OPUC  
December 14, 2021



# Clean Fuels Program (CFP)

---

- Oregon Department of Environmental Quality (DEQ)
- Low Carbon Fuel Standard (LCFS)
- Cap and trade

# CFP Program Design Principles

---

1. Support the goal of electrifying Oregon's transportation sectors
2. Provide majority of benefits to residential customers
3. Provide benefits to traditionally underserved communities
4. Programs are designed to be independent from ratepayer support
5. Programs are developed collaboratively and transparently
6. Maximize use of funds for implementation of program

# Stakeholder Review Process

---

- September 10, 2021: Draft 2022 CFP plans circulated
- September 24: First workshop to receive initial stakeholder feedback
- October 15: Second Workshop to receive final stakeholder feedback
- November 19: 2022 CFP plans filed
- December 14: Public Meeting Staff Report on review process

# Portland General Electric's 2022 CFP Plan

| <b>Program</b>           | <b>Cost</b>         |
|--------------------------|---------------------|
| Drive Change Fund        | \$ 2,300,000        |
| Public Infrastructure    | 1,450,000           |
| Grant Matching           | 400,000             |
| Statewide Campaign       | 380,000             |
| Electric School Bus Fund | 1,500,000           |
| Residential Outreach     | 110,000             |
| School Engagement        | 50,000              |
| Vehicle to Grid          | 100,000             |
| ROW Charging             | 250,000             |
| Administrative Costs     | 600,000             |
| <b>Total</b>             | <b>\$ 7,140,000</b> |

# Pacific Power's 2022 CFP Plan

---

| <b>Program</b>                | <b>Cost</b>         |
|-------------------------------|---------------------|
| Electric Mobility Grant       | \$ 1,380,000        |
| Grant Matching                | 500,000             |
| Outreach and Education        | 215,000             |
| Management and Administration | 290,000             |
| Contingency                   | 95,400              |
| <b>Total</b>                  | <b>\$ 2,480,400</b> |

# UM 1826 Contributions to TE Planning

---

- Focus on underserved communities
- Presented as a portfolio
- Consistent planning cycle