

ZiPLY Fiber  
4155 SW Cedar Hills Blvd, Beaverton, OR 97005  
Jessica Epley  
M. (503) 431-0458  
jessica.epley@ziPLY.com



---

January 6, 2021

Sent via electronic mail to [puc.filingcenter@state.or.us](mailto:puc.filingcenter@state.or.us)

Attn: Filing Center  
Oregon Public Utilities Commission  
201 High Street S.E., Suite 100  
Salem, Oregon 97301

Re: Advice No. 2021-1 for Frontier Communications Northwest, LLC dba ZiPLY Fiber

Dear Filing Center:

Enclosed for filing please find revisions to Frontier Communications Northwest, LLC dba ZiPLY Fiber's Tariff P.U.C. No 13, Exchange Maps. This filing is submitted with an effective date of February 5, 2021. The following revisions are included in this filing:

Enterprise:	1 <sup>st</sup> Revised Sheet 18, Cancelling Original Sheet 18
Forest Grove:	1 <sup>st</sup> Revised Sheet 19, Cancelling Original Sheet 19
Joseph:	1 <sup>st</sup> Revised Sheet 26, Cancelling Original Sheet 26
Lostine:	1 <sup>st</sup> Revised Sheet 30, Cancelling Original Sheet 30
Murphy-Provolt:	1 <sup>st</sup> Revised Sheet 33, Cancelling Original Sheet 33
Wallowa:	1 <sup>st</sup> Revised Sheet 48, Cancelling Original Sheet 48
Gaston:	Original Sheet 50

This filing is being made to display actual service territory which reflects actual ZiPLY Fiber customer locations which was previously incorrectly depicted as unserved territory and/or outside the currently depicted exchange boundary. The correction was discovered as a result of comparing the FCC's Study Area Boundaries with our internal network records and the filed exchange boundary maps found in Tariff P.U.C. No. 13.

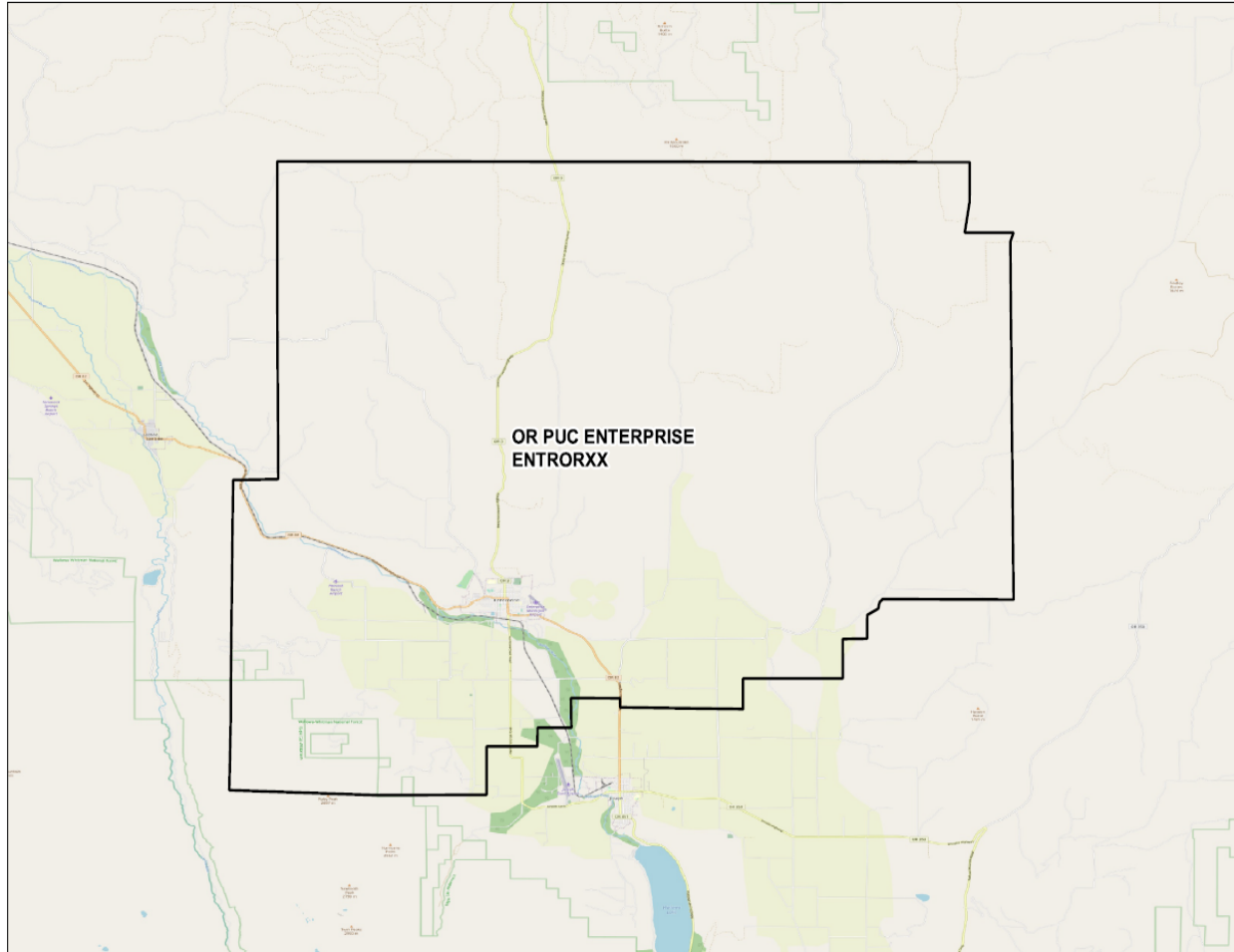
If you have any questions regarding this filing, you may contact me at (503) 431-0458.

Sincerely,

A handwritten signature in black ink, appearing to read "JEpley".

Jessica Epley  
Regulatory & External Affairs Director

**ENTERPRISE EXCHANGE AREA MAP**

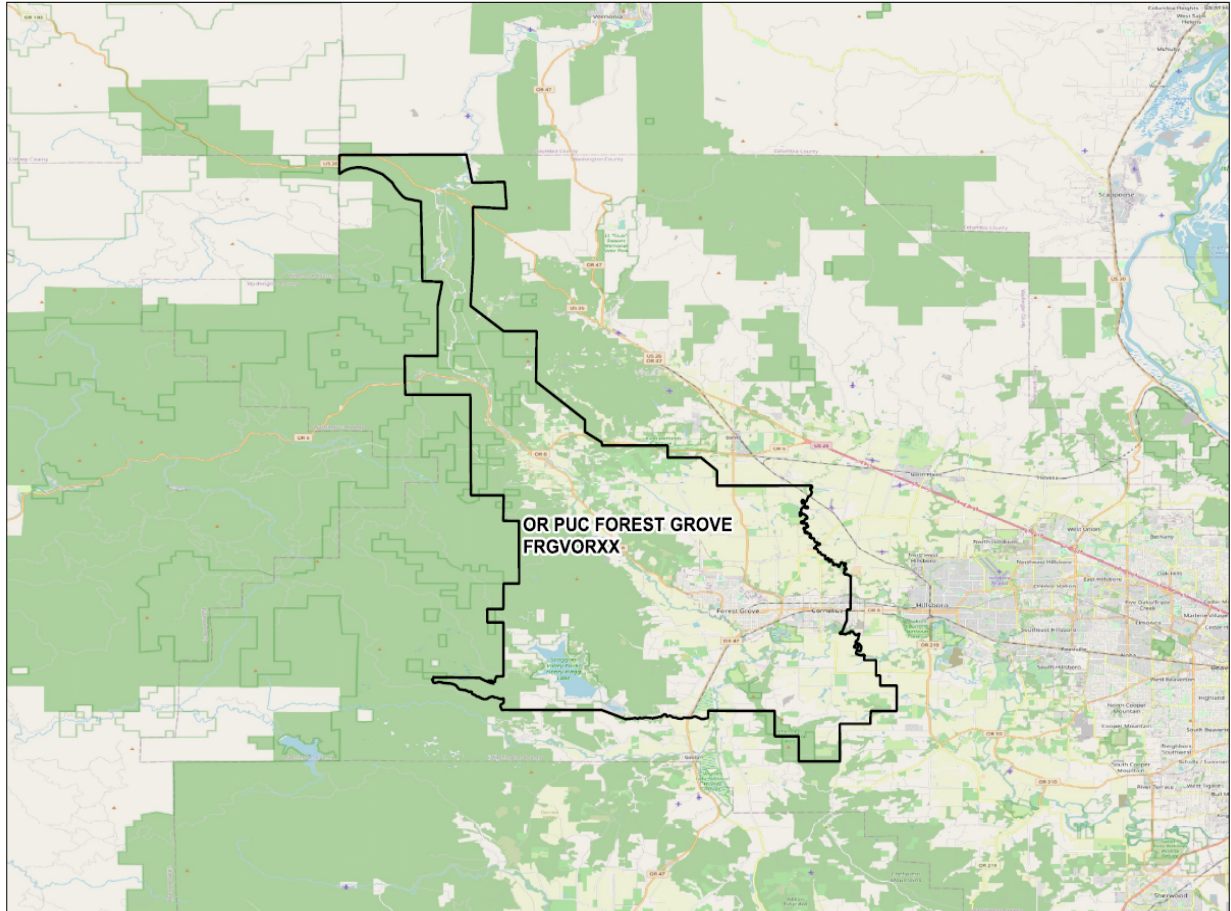


---

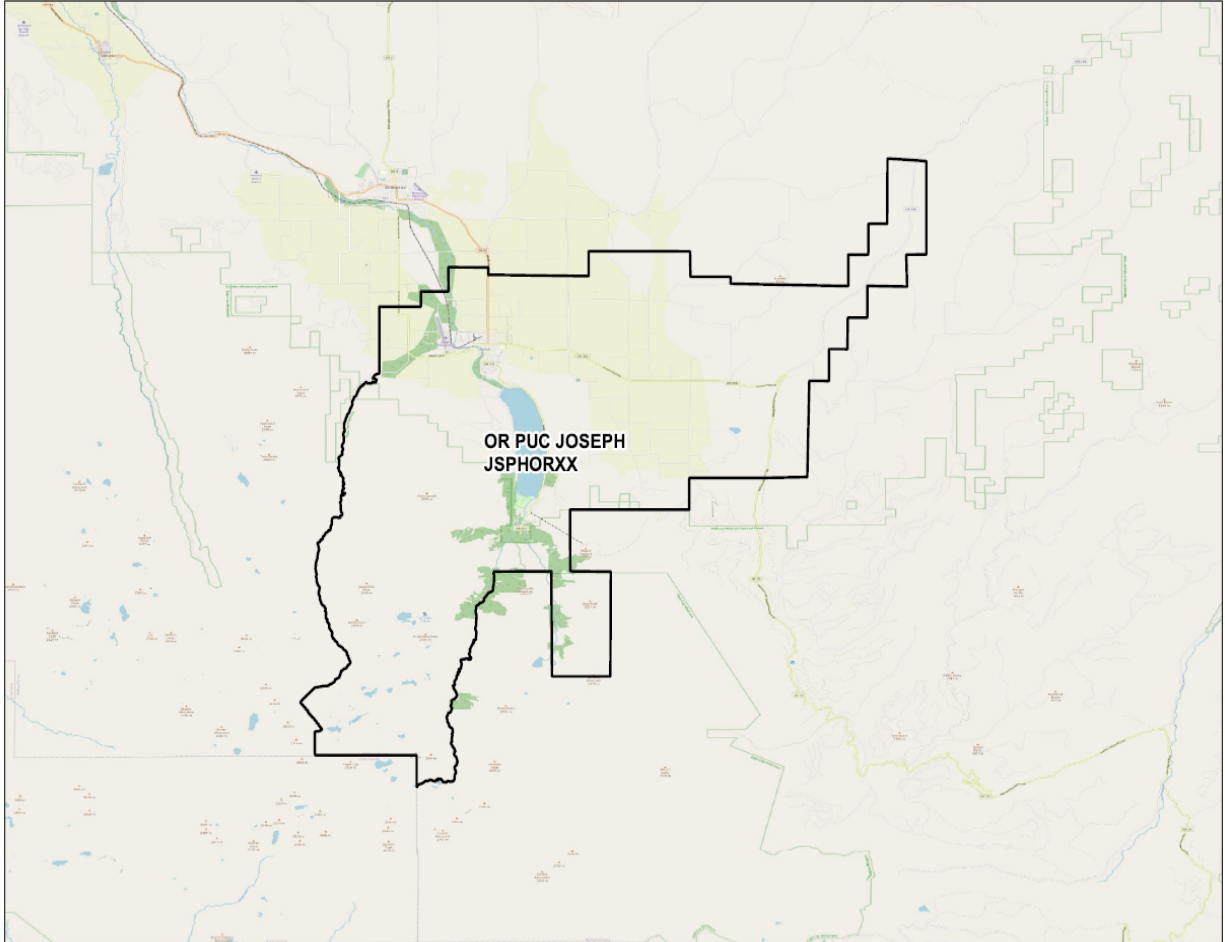
ISSUED: JANUARY 6, 2021  
ISSUED BY ZIPLY FIBER  
BY JESSICA EPLEY, REGULATORY & EXTERNAL AFFAIRS DIRECTOR

EFFECTIVE: FEBRUARY 5, 2021

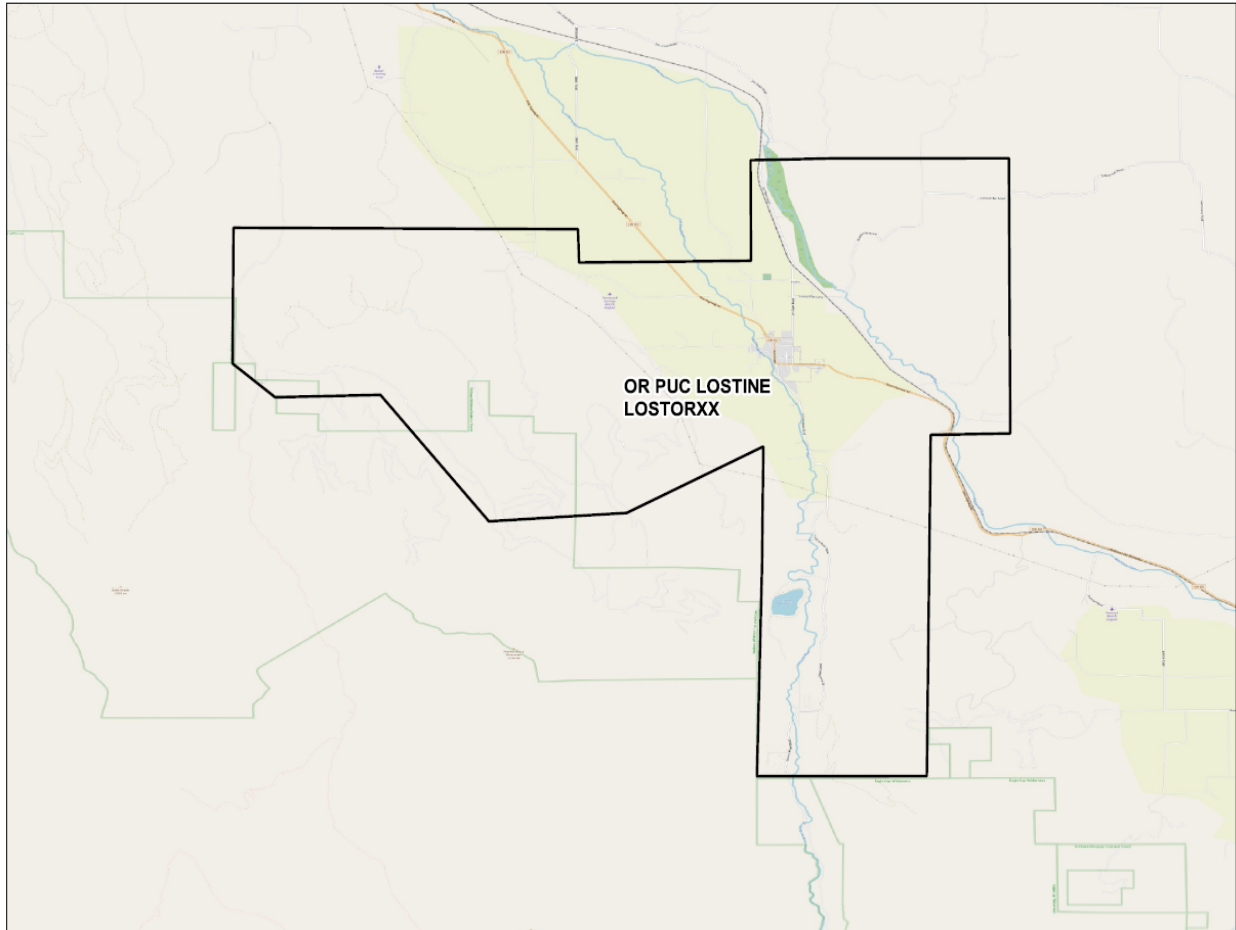
**FOREST GROVE EXCHANGE AREA MAP**



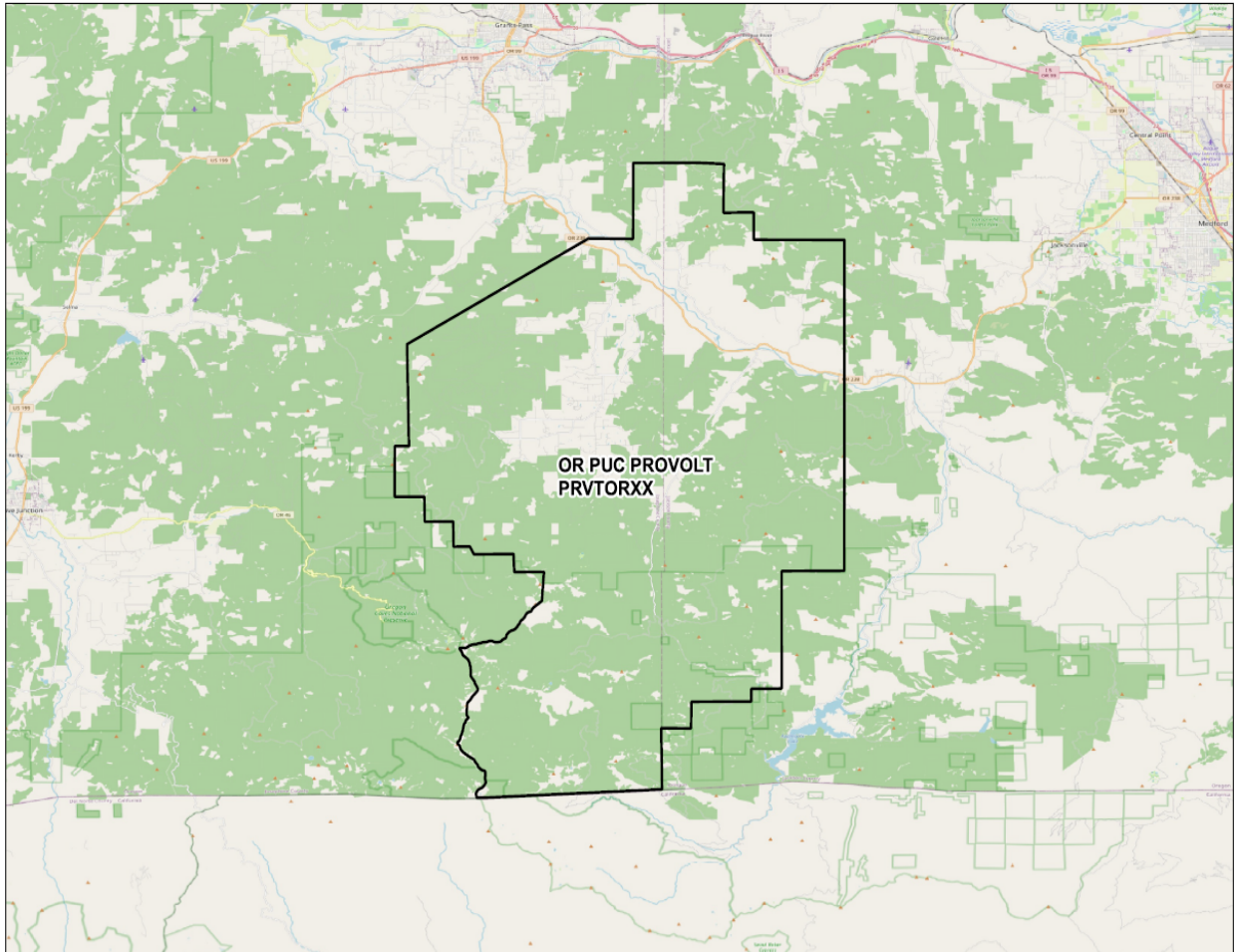
**JOSEPH EXCHANGE AREA MAP**



**LOSTINE EXCHANGE AREA MAP**



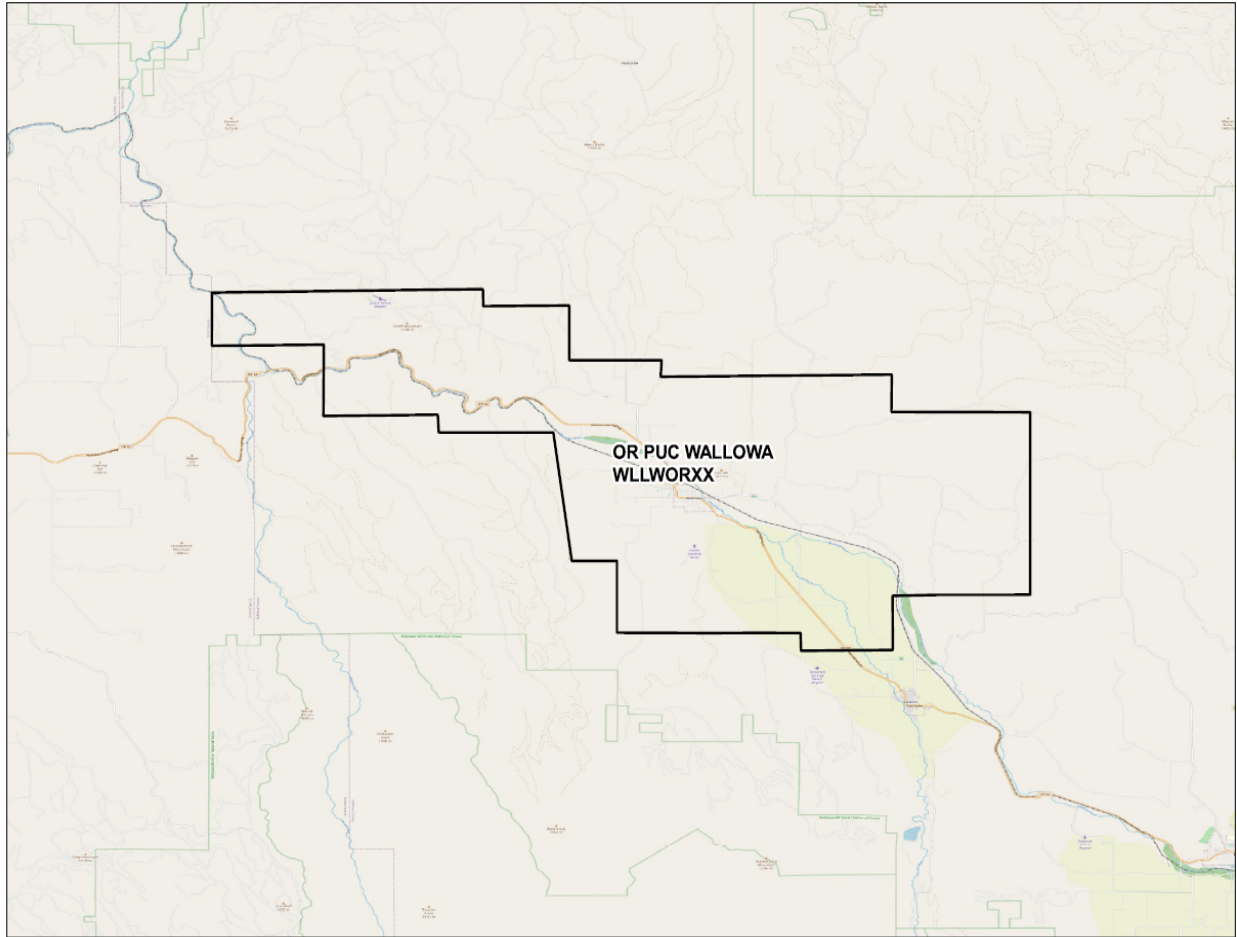
**MURPHY-PROVOLT EXCHANGE AREA MAP**



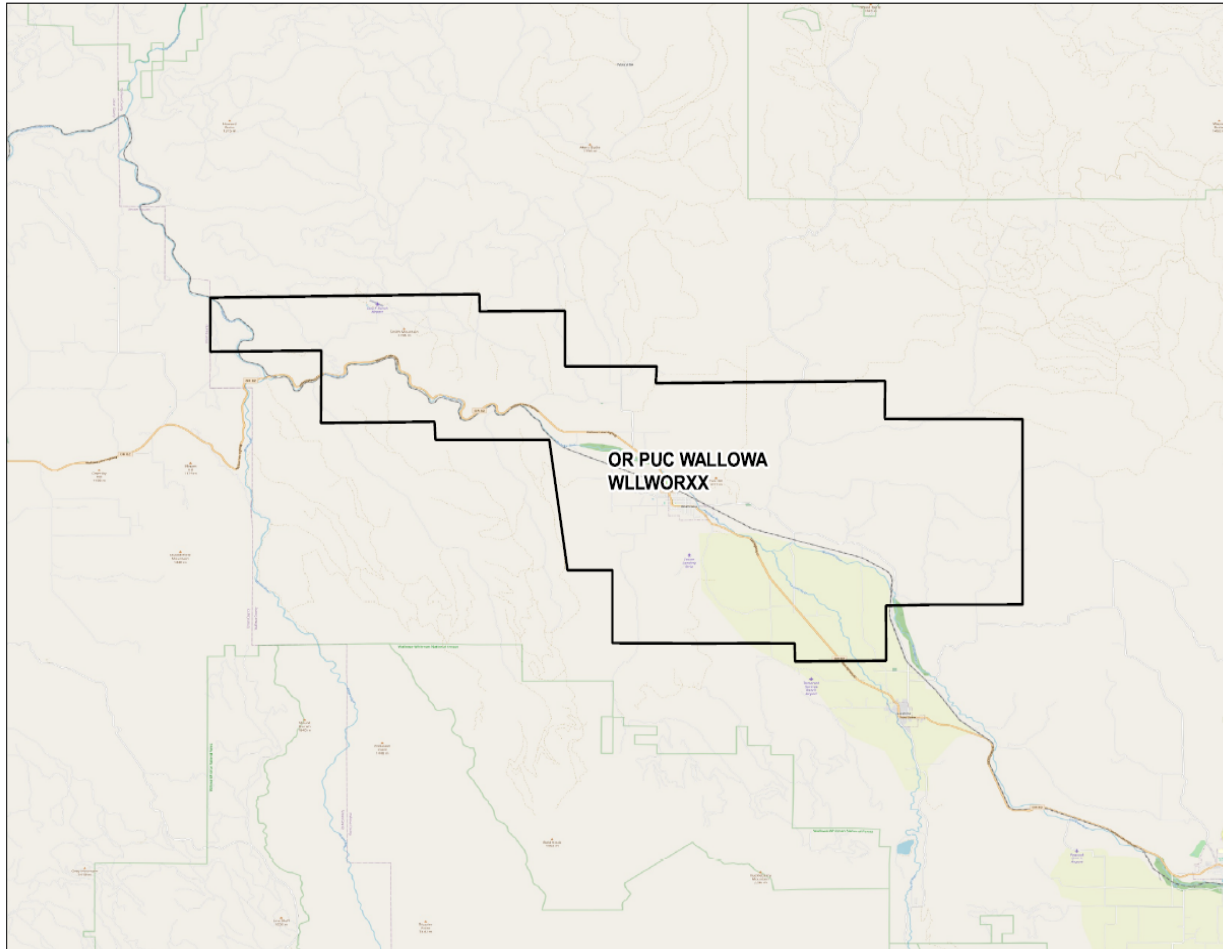
ISSUED: JANUARY 6, 2021  
ISSUED BY ZIPLY FIBER  
BY JESSICA EPLEY, REGULATORY & EXTERNAL AFFAIRS DIRECTOR

EFFECTIVE: FEBRUARY 5, 2021

**WALLOWA EXCHANGE AREA MAP**



**GASTON EXCHANGE AREA MAP**



ISSUED: JANUARY 6, 2021  
ISSUED BY ZIPLY FIBER  
BY JESSICA EPLEY, REGULATORY & EXTERNAL AFFAIRS DIRECTOR

EFFECTIVE: FEBRUARY 5, 2021