



# Oregon

Kate Brown, Governor

**Public Utility Commission**

201 High St SE Suite 100

Salem, OR 97301-3398

**Mailing Address:** PO Box 1088

Salem, OR 97308-1088

503-373-7394

January 26, 2021



BY EMAIL

Frontier Communications Northwest, LLC, dba Ziplly Fiber

jessica.epley@ziply.com

RE: Advice No. 2021-1

At the public meeting on January 26, 2021, the Commission adopted Staff's recommendation in this matter docketed as ADV 1228. The Staff Report and a receipted copy of the sheets in your advice filing are attached.

Nolan Moser

Chief Administrative Law Judge

Public Utility Commission of Oregon

(503) 378-3098

**PUBLIC UTILITY COMMISSION OF OREGON  
STAFF REPORT  
PUBLIC MEETING DATE: January 26, 2021**

**REGULAR**  **CONSENT**  **EFFECTIVE DATE** February 5, 2021

**DATE:** January 12, 2021

**TO:** Public Utility Commission

**FROM:** Stephanie Yamada

**THROUGH:** Bryan Conway, Michael Dougherty, and Bruce Hellebuyck **SIGNED**

**SUBJECT:** FRONTIER COMMUNICATIONS NORTHWEST, LLC:  
(Docket No. ADV 1228/Advice No. 2021-1)  
Updates exchange maps.

**STAFF RECOMMENDATION:**

Staff recommends that the Public Utility Commission of Oregon (Commission) allow the tariff sheets filed by Frontier Communications Northwest, LLC dba Ziplly Fiber (Frontier or Company) to become effective.

**DISCUSSION:**

Issue

Whether the Commission should allow Frontier's filed tariff sheets to become effective.

Applicable Rule or Law

Telecommunications utilities are required under ORS 759.175 to submit tariff filings to the Commission whenever they intend to change their rates, terms, or conditions of service.

Frontier is regulated under a Price Plan pursuant to ORS 759.255 and Order No. 18-303 in Docket No. UM 1895. Section 9.a.i of the Price Plan requires Frontier to file all tariff changes with the Commission at least 30 days prior to the effective date of the change.

### Analysis

With this filing, Frontier proposes to update its service territory maps in the Enterprise, Forest Grove, Joseph, Lostine, Murphy-Provolt, Wallowa, and Gaston exchanges. Frontier states that the purpose of this filing is “to display actual service territory which reflects actual Ziplly Fiber customer locations which was previously incorrectly depicted as unserved territory and/or outside the currently depicted exchange boundary.”<sup>1</sup> Frontier also states that the “correction was discovered as a result of comparing the FCC’s Study Area Boundaries with [the Company’s] internal network records and the filed exchanged boundary maps.”<sup>2</sup>

This filing was submitted 30 days prior to the effective date, as required by Frontier’s Price Plan. On January 13 and January 22, 2021, Frontier submitted supplemental filings to correct errors in the Gaston and Lostine exchanges, respectively.

### Conclusion

This filing complies with applicable laws and Commission orders, and should be approved.

### **PROPOSED COMMISSION MOTION:**

Allow Frontier’s filed tariff sheets to become effective.

---

<sup>1</sup> Advice Letter.

<sup>2</sup> *Ibid.*

**ENTERPRISE EXCHANGE AREA MAP**



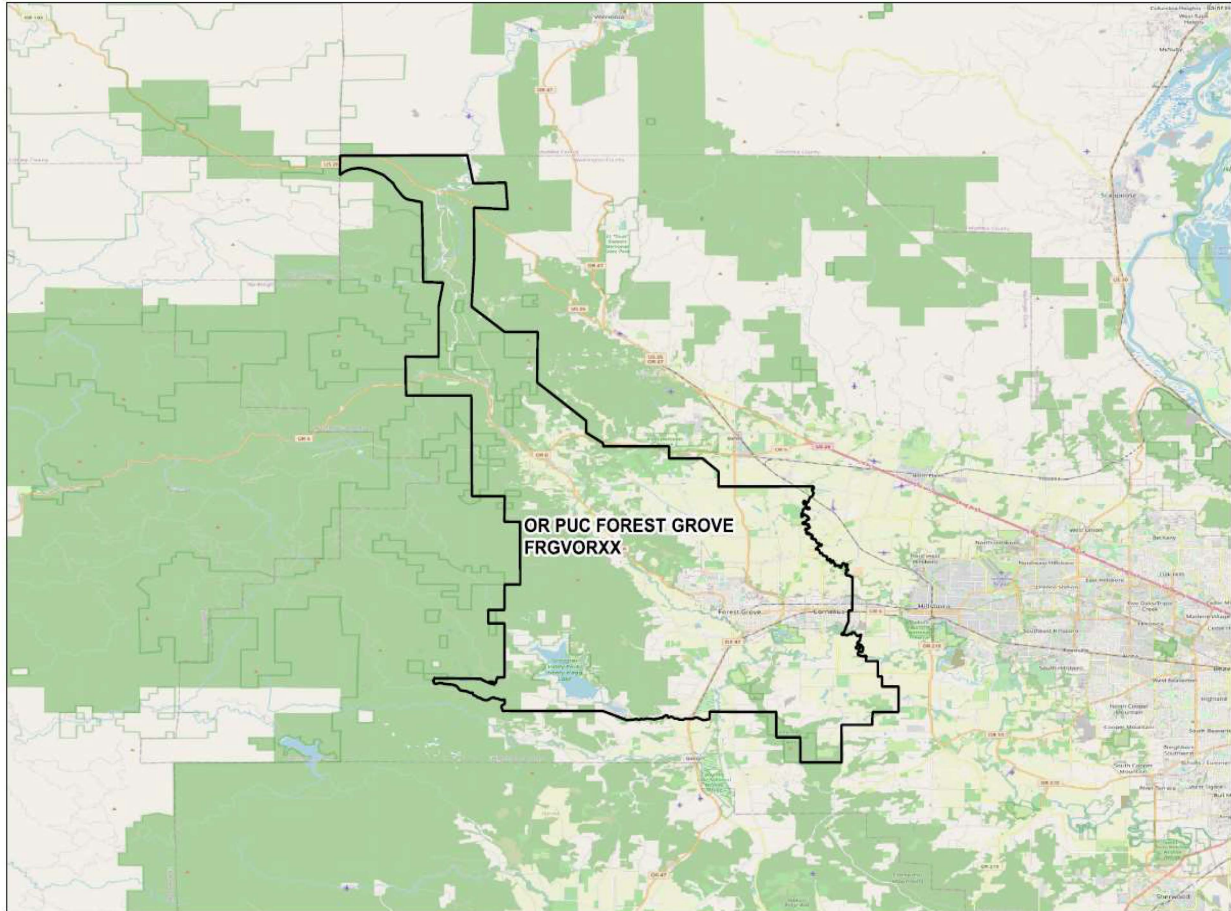
Received

Filing Center  
JAN 06 2021

ISSUED: JANUARY 6, 2021  
ISSUED BY ZIPLY FIBER  
BY JESSICA EPLEY, REGULATORY & EXTERNAL AFFAIRS DIRECTOR

EFFECTIVE: FEBRUARY 5, 2021

**FOREST GROVE EXCHANGE AREA MAP**



Received

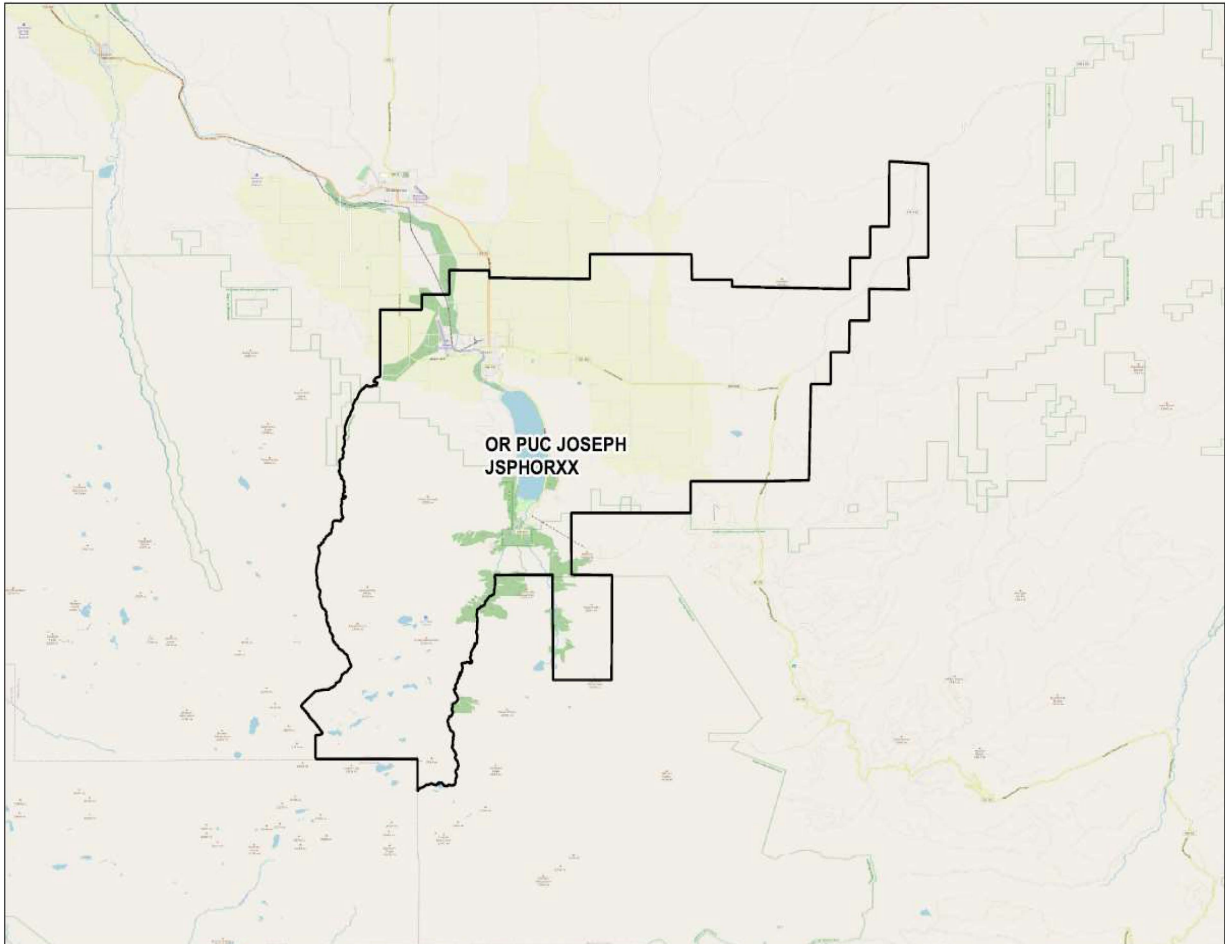
Filing Center  
JAN 06 2021

ISSUED: JANUARY 6, 2021  
ISSUED BY ZIPLY FIBER

BY JESSICA EPLEY, REGULATORY & EXTERNAL AFFAIRS DIRECTOR

EFFECTIVE: FEBRUARY 5, 2021

JOSEPH EXCHANGE AREA MAP



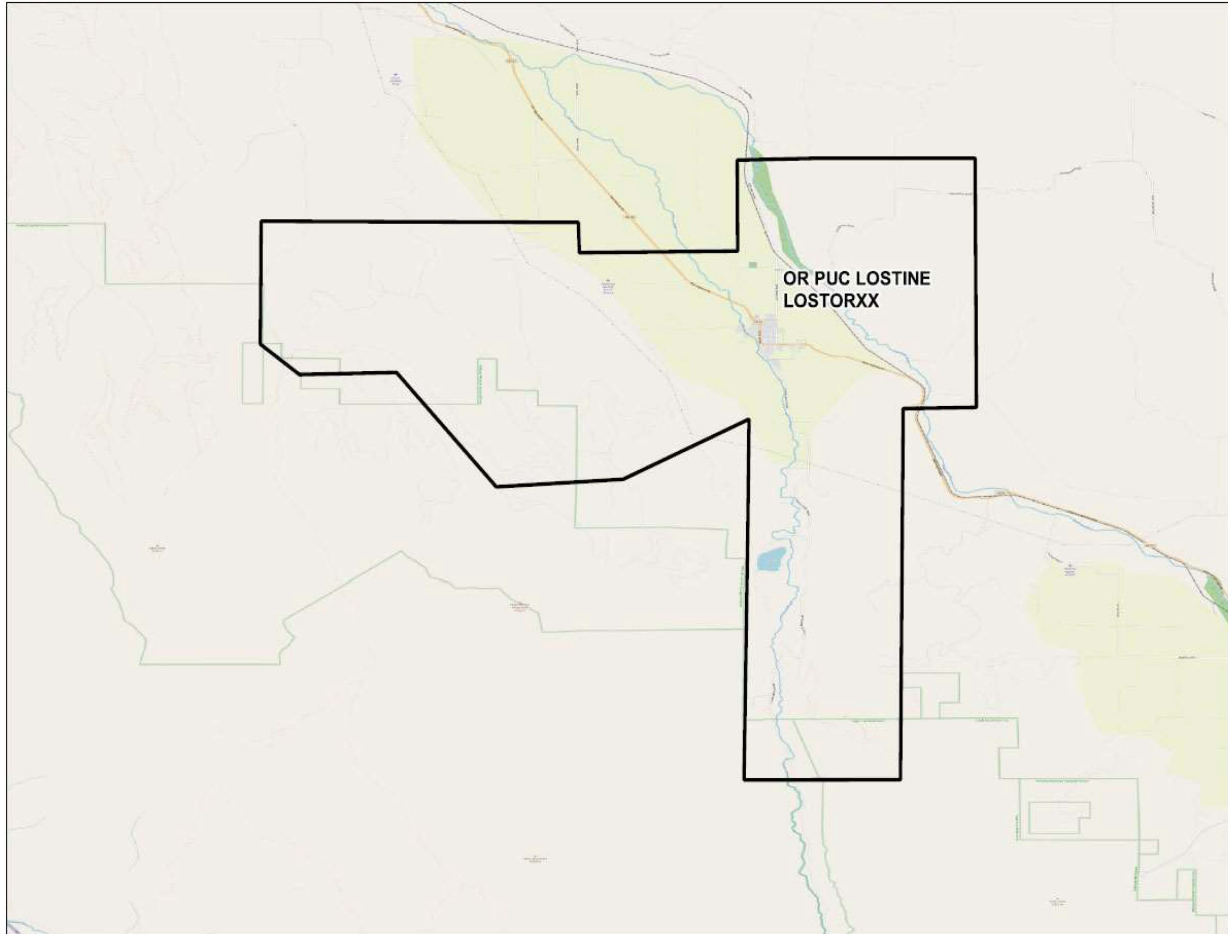
Received

Filing Center  
JAN 06 2021

ISSUED: JANUARY 6, 2021  
ISSUED BY ZIPLY FIBER  
BY JESSICA EPLEY, REGULATORY & EXTERNAL AFFAIRS DIRECTOR

EFFECTIVE: FEBRUARY 5, 2021

LOSTINE EXCHANGE AREA MAP



Received

Filing Center

JAN 22 2021

ISSUED: JANUARY 6, 2021

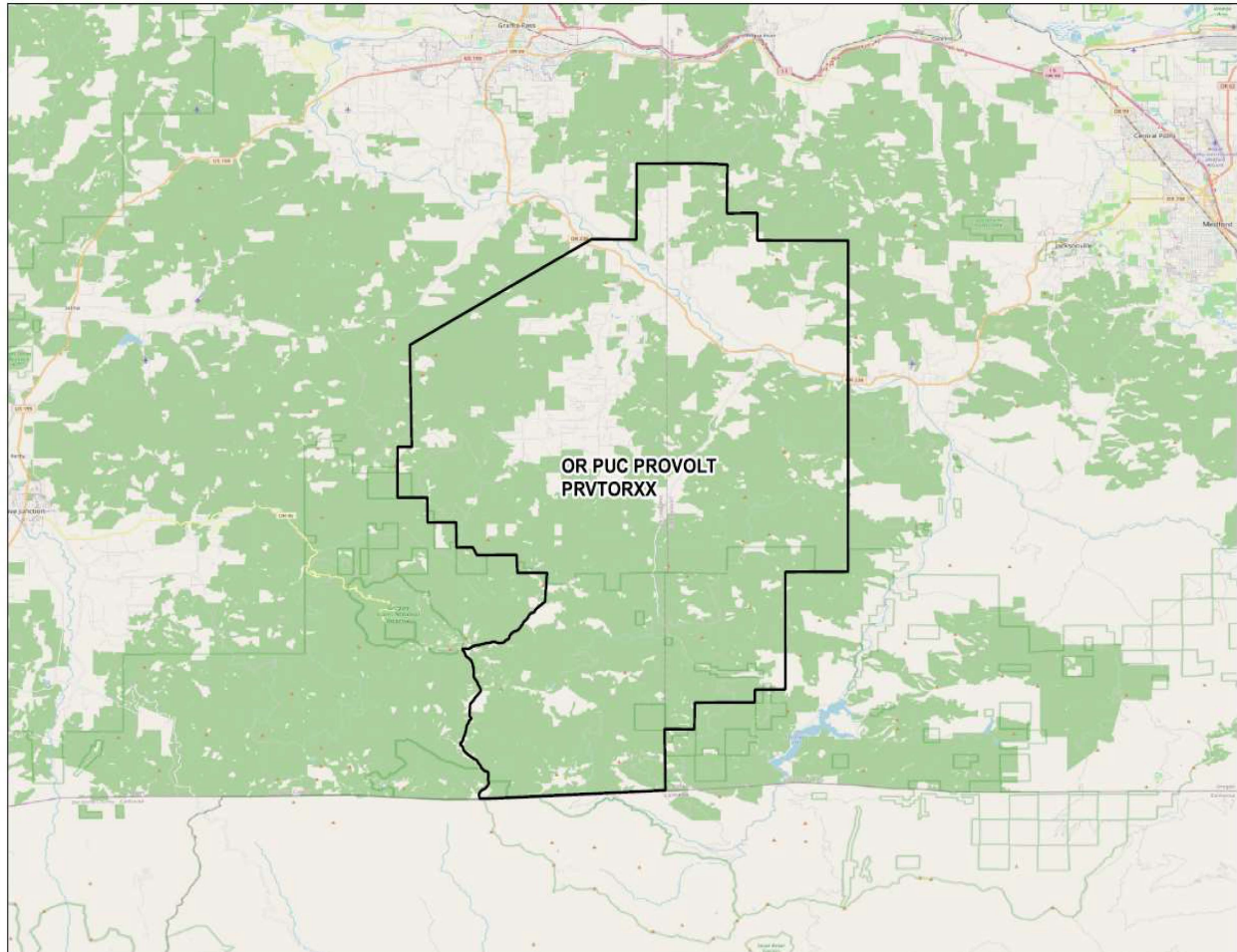
ISSUED BY ZIPLY FIBER

BY JESSICA EPLEY, REGULATORY & EXTERNAL AFFAIRS DIRECTOR

EFFECTIVE: FEBRUARY 5, 2021



**MURPHY-PROVOLT EXCHANGE AREA MAP**



Received

Filing Center  
JAN 06 2021

ISSUED: JANUARY 6, 2021

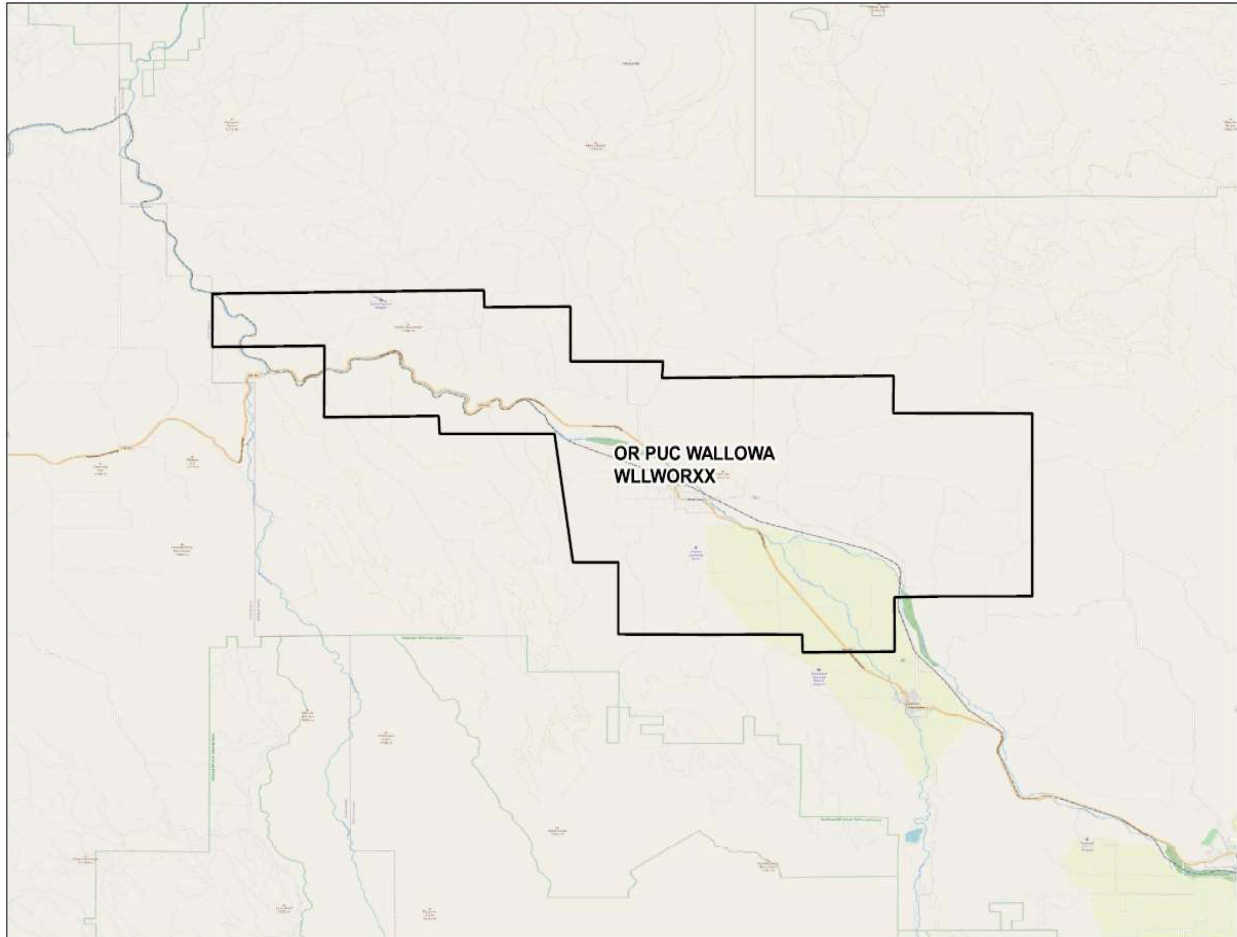
ISSUED BY ZIPLY FIBER

BY JESSICA EPLEY, REGULATORY & EXTERNAL AFFAIRS DIRECTOR

EFFECTIVE: FEBRUARY 5, 2021



**WALLOWA EXCHANGE AREA MAP**



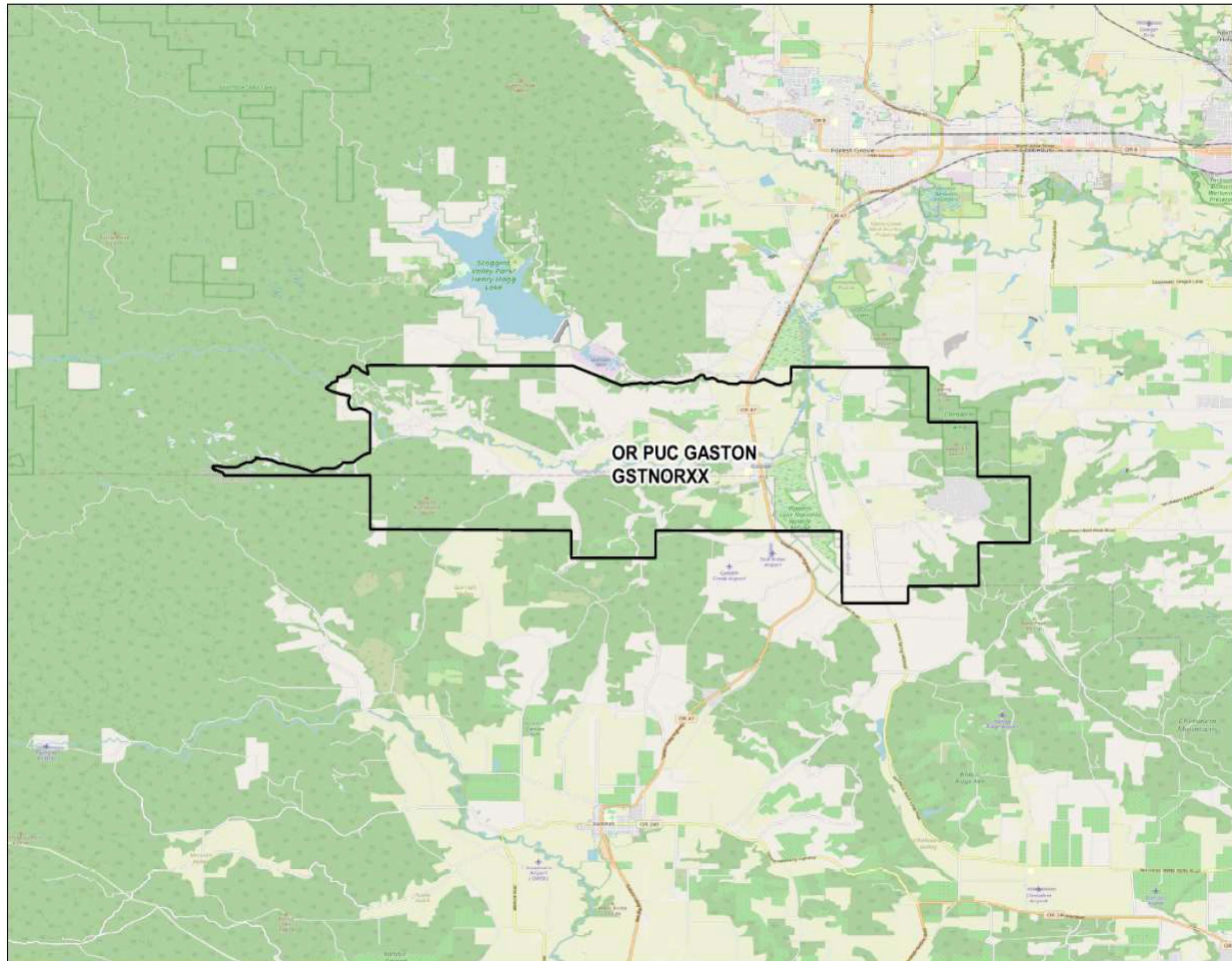
Received

Filing Center  
JAN 06 2021

ISSUED: JANUARY 6, 2021  
ISSUED BY ZIPLY FIBER  
BY JESSICA EPLEY, REGULATORY & EXTERNAL AFFAIRS DIRECTOR

EFFECTIVE: FEBRUARY 5, 2021

GASTON EXCHANGE AREA MAP



Received

Filing Center  
JAN 13 2021

ISSUED: JANUARY 6, 2021  
ISSUED BY ZIPTY FIBER  
BY JESSICA EPLEY, REGULATORY & EXTERNAL AFFAIRS DIRECTOR

EFFECTIVE: FEBRUARY 5, 2021