

ZiPLY Fiber  
4155 SW Cedar Hills Blvd, Beaverton, OR 97005  
Jessica Epley  
M. (503) 431-0458  
jessica.epley@ziPLY.com



---

January 13, 2021

Sent via electronic mail to [puc.filingcenter@state.or.us](mailto:puc.filingcenter@state.or.us)

Attn: Filing Center  
Oregon Public Utilities Commission  
201 High Street S.E., Suite 100  
Salem, Oregon 97301

Re: Revised Advice No. 2021-1 for Frontier Communications Northwest, LLC dba ZiPLY Fiber

Dear Filing Center:

The documents furnished to the Commission on January 6, 2021 inadvertently contained an error in the Gaston Exchange. Enclosed for filing please find a revised map for this exchange to be filed in the Frontier Communications Northwest, LLC dba ZiPLY Fiber's Tariff P.U.C. No 18, Exchange Maps as Original Sheet 50. This filing is submitted with an effective date of February 5, 2021.

This filing is being made to display actual service territory which reflects actual ZiPLY Fiber customer locations which was previously incorrectly depicted as unserved territory and/or outside the currently depicted exchange boundary. The correction was discovered as a result of comparing the FCC's Study Area Boundaries with our internal network records and the filed exchange boundary maps found in Tariff P.U.C. No. 18.

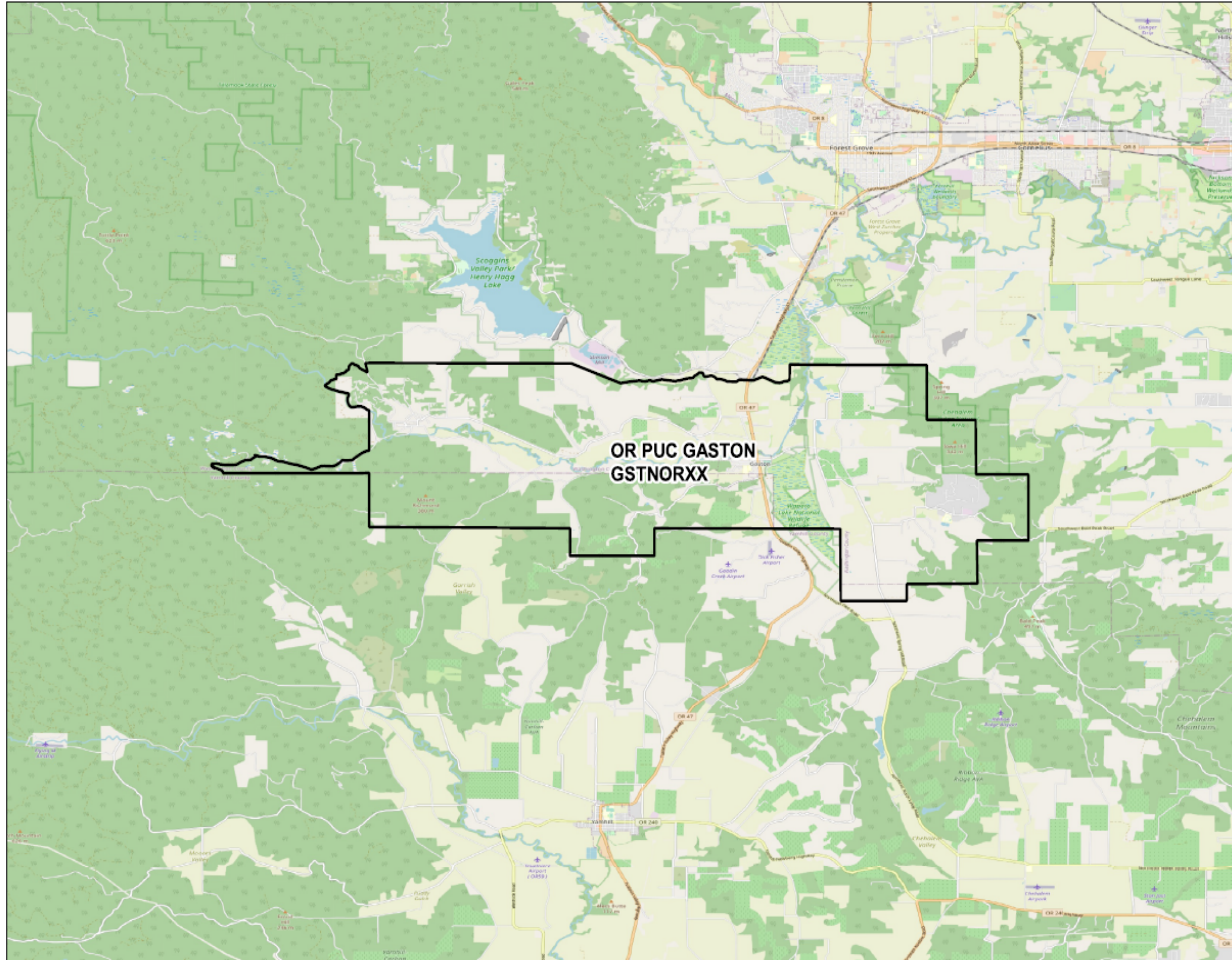
If you have any questions regarding this filing, you may contact me at (503) 431-0458.

Sincerely,

A handwritten signature in black ink, appearing to read "JEpley".

Jessica Epley  
Regulatory & External Affairs Director

**GASTON EXCHANGE AREA MAP**



ISSUED: JANUARY 6, 2021  
ISSUED BY ZIPLY FIBER  
BY JESSICA EPLEY, REGULATORY & EXTERNAL AFFAIRS DIRECTOR

EFFECTIVE: FEBRUARY 5, 2021