

# Flexible Load Plan

PRESENTATION FOR PUC PUBLIC MEETING— MAY 18, 2021

JASON SALMI KLOTZ, PGE PROGRAM TEAM

KARLA WENZEL, PGE REGULATORY POLICY AND STRATEGY



The image features a dark blue background on the right side, which contains the main text. On the left side, there is a photograph of a forest floor with large, gnarled tree roots and green moss. A series of white, wavy lines runs horizontally across the bottom of the image, separating the forest photo from the blue background.

# Flexible Load Plan Overview



# Purpose of the Flexible Load Plan

## Adjust Development Practices

Show maturity of program and resource development.

Propose a change in practice which will give Commission transparency, comprehensive review, and regular reporting of PGE's flexible load resource build activity. Transition from single deferral/program system to portfolio level, multiyear planning and budgeting.



## Demonstrate Transparency, Competency

Show proficiency; be open about challenges and successes. Gain trust; propose new open reporting and development practices. Transparently communicate our current cost effectiveness methodology



## Evolve DR Capability into Flexible Load

Go beyond simple capacity to other services and technology to be more inclusive; define DR as a service not a product



## Regulatory Alignment Discussion

PGE encourages a broader discussion regarding alignment of regulatory incentives for utilities and goal to acquire all cost effective flexible capacity.



# The Flexible Load Plan Document

## Main Chapters

### Chapter Two

Planning, Goal Setting,  
Regulatory Alignment

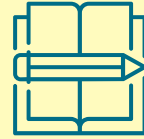
Reviews current activity and outlines issues to be addressed by proposal.



### Chapter Three

Programs

Proposes to move to multiyear planning and budgeting. Communicates program development - Demonstration, Pilot, Program, and Testbed.



### Chapter Four

Cost Effectiveness

Reviews cost effectiveness methodology and Flexible Load service valuation, which aligns with Commission valuation of Energy Efficiency and Storage.



### Chapter Five

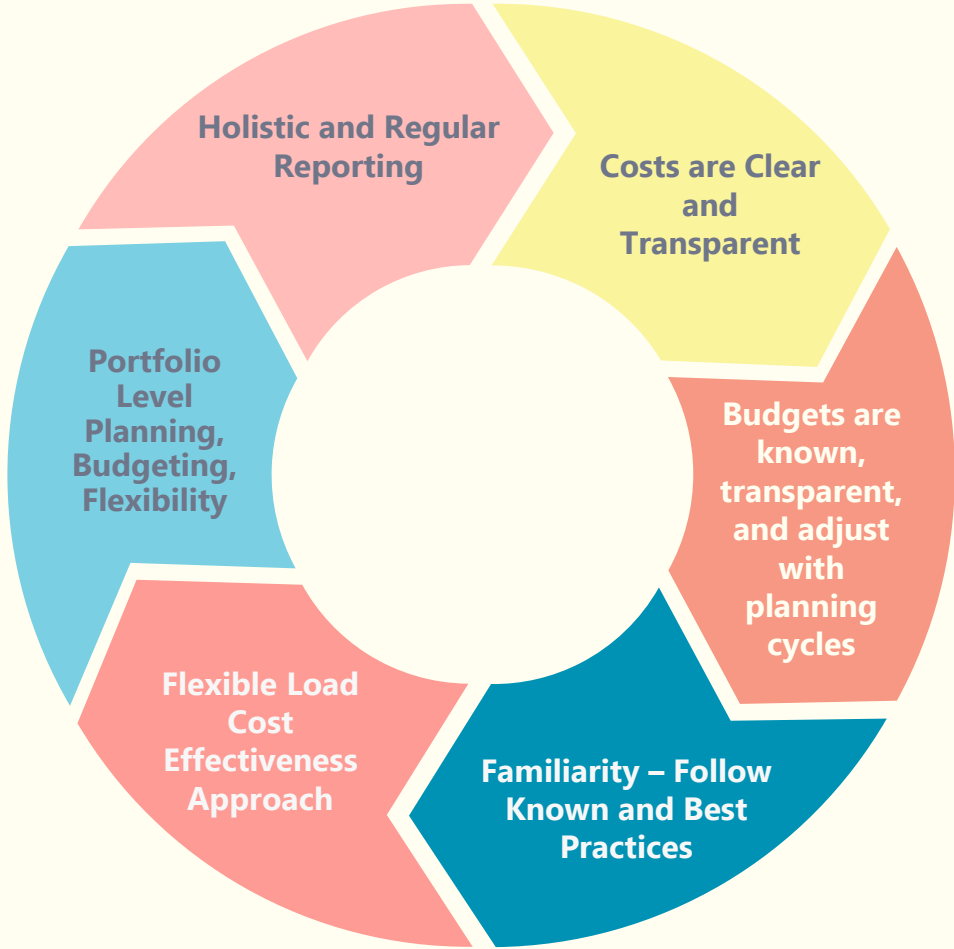
Regulatory Alignment

Invites a conversation about regulatory alignment.



# Necessary Practice Change

Reasons/Benefits of Multiyear Plan



# Portfolio Versus Programmatic Activity and Costs

## Preliminary Thinking

### Examples of Possible Portfolio Costs

#### Measure Data Base Development

Develop for PGE and Regional Benefit a Measure Development Database

#### PGE Integration Costs

These include IT, Billing, Metering, Communications network, API/Cloud Integrations, DRMS/ADMS Integration .

#### Coordination Costs

Coordination costs with State and Regional EE infrastructure and furtherance of Flex Load development, Portfolio level education & outreach

### Examples of Possible Program/Measure Costs

#### Program Administration

Incentive costs, program/project management, reporting and tracking

#### Contracting Costs

Program management contractors, Program deployment contractors, third party evaluation & planning costs.

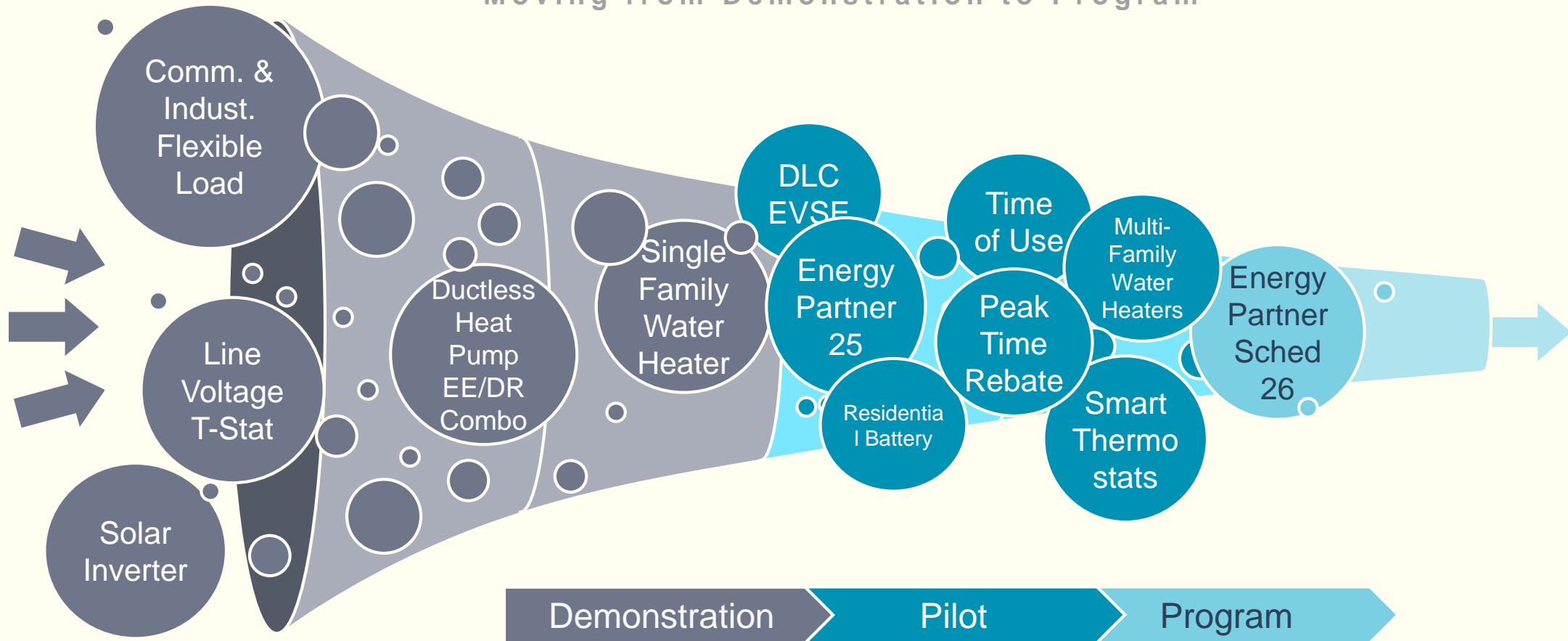
#### Deployment Costs

Direct marketing costs, Install and deployment costs



# Program Funnel

Moving from Demonstration to Program



PGE is building a funnel of program activity moving from discovery and demonstration, to pilot scaling, to firm service- territory- wide offering incorporated into dispatchable power operations resource portfolio.



# Pilot/Program Budgets

						Demand Response	
Project	Current Status	2017 and prior Actuals	2018 Actuals	2019 Actuals	2020 Forecast	2021 Forecast	
<b>Residential DR</b>							
- Flex	Pilot	\$ 1,405,259	\$ 398,756	\$ 2,052,173	\$ 3,142,000	\$ 3,674,000	
- DLCT	Pilot	\$ 752,962	\$ 1,109,041	\$ 3,643,917	\$ 3,268,316	\$ 3,860,961	
- MFWH	Pilot	\$ 60,583	\$ 1,073,623	\$ 2,999,211	\$ 3,556,223	\$ 4,149,283	
- Residential Energy Storage	Pilot	N/A	N/A	N/A	\$ 519,008	\$ 761,563	
<b>Sub-Total Residential DR</b>		\$ 2,218,804	\$ 2,581,420	\$ 8,695,301	\$ 10,485,547	\$ 12,445,807	
<b>Non-Residential DR</b>							
- Energy Partner	Pilot approaching Program	\$ 4,374,045	\$ 2,722,772	\$ 2,660,926	\$ 3,730,000	\$ 3,720,000	
<b>Sub-Total Demand Response</b>		\$ 6,592,849	\$ 5,304,192	\$ 11,356,227	\$ 13,696,539	\$ 15,404,244	
				Nov '18 - Oct '19 Actuals	Nov '19 - Oct '20 Actuals plus Forecast	Nov '20 - Oct '21 Forecast	
<b>Testbed DR</b>							
- Testbed	Project with Demonstrations			\$ 265,120	\$ 1,819,942	\$ 3,779,938	
<b>Demand Response Portfolio Total</b>		\$ 6,592,849	\$ 5,304,192	\$ 11,621,347	\$ 16,035,489	\$ 19,945,745	





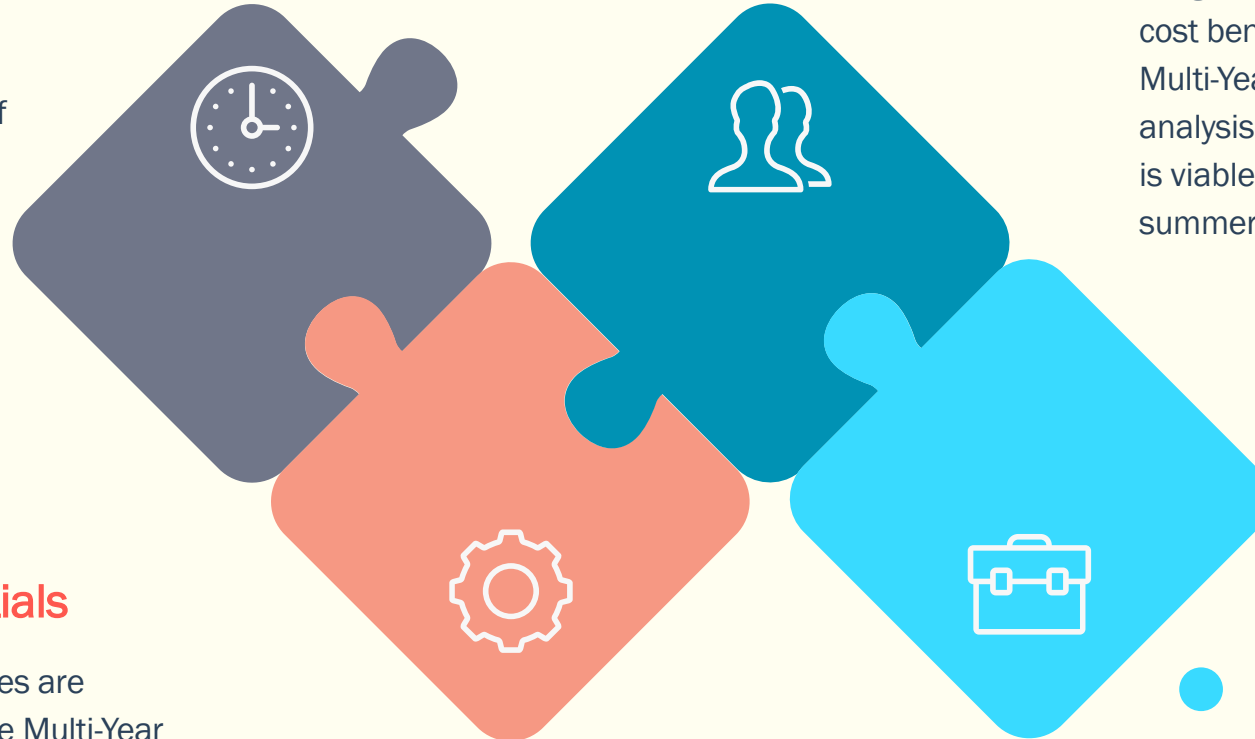
# Next Steps

Informed by Commission Action and Stakeholder Comments

## ● Funding Flexible Load

PGE is assessing options for cost recovery including an assessment of rate case treatment of flexible load.

Current through July



## ● Flex Load Potentials

DSP DER draft potential studies are underway which will inform the Multi-Year Plan. The DSP Team will be sharing the results of our Draft DER potential study this month through UM 2005 proceedings.

Current through August

## ● Alignment of Perspectives

In light of changing policy the DSP Team is re-assessing cost benefit analysis for DERs. This work will inform the Multi-Year Plan filing and its timing as cost benefit analysis affects budgeting and assessment of what work is viable. DSP is scheduled to complete this work in late summer/ early fall.

Current through October

## ● Filing

September

The Multi-Year Plan will be submitted as part of a succession of filing (TE Plan, Multi-Year Plan, DSP, and Phase II Testbed) to show the sum of our integrated grid and customer program work. This will allow us to better plan and communicate the connections between various customer focused work streams.





# Thank you

