



Portland General Electric Company
121 SW Salmon Street • Portland, Oregon 97204
PortlandGeneral.com

March 14, 2019

Public Utility Commission of Oregon
Attn: Filing Center
201 High Street, S.E.
P.O. Box 1088
Salem, OR 97308-1088

RE: UE 319 / Order 17-511 Compliance Report Characterizing Customers on PGE's Large Non-Residential Optional Time-of-Day Standard Service (Schedule 38)

Pursuant to Order 17-511, following UE 319, Portland General Electric Company (PGE) hereby submits an annual characterization of customers on its Large Non-Residential Optional Time-of-Day Standard Service (Schedule 38), detailing the number of customers, their average consumption per month and annual load factors. This report is for the 2018 calendar year.

Schedule 38 is designed for non-residential customers whose peak demand is relatively high compared to their consumption. Customers on this service are billed entirely volumetrically (in addition to a basic charge) rather than combination of a volumetric and demand charges.

Should you have any questions or comments regarding this filing, please contact Ashleigh Keene at (503) 464-8096. Please direct all formal correspondence and requests to the following email address pge.opuc.filings@pgn.com

Sincerely,

A handwritten signature in black ink, appearing to read "Karla Wenzel". The signature is written in a cursive, flowing style.

Karla Wenzel
Manager, Pricing and Tariffs

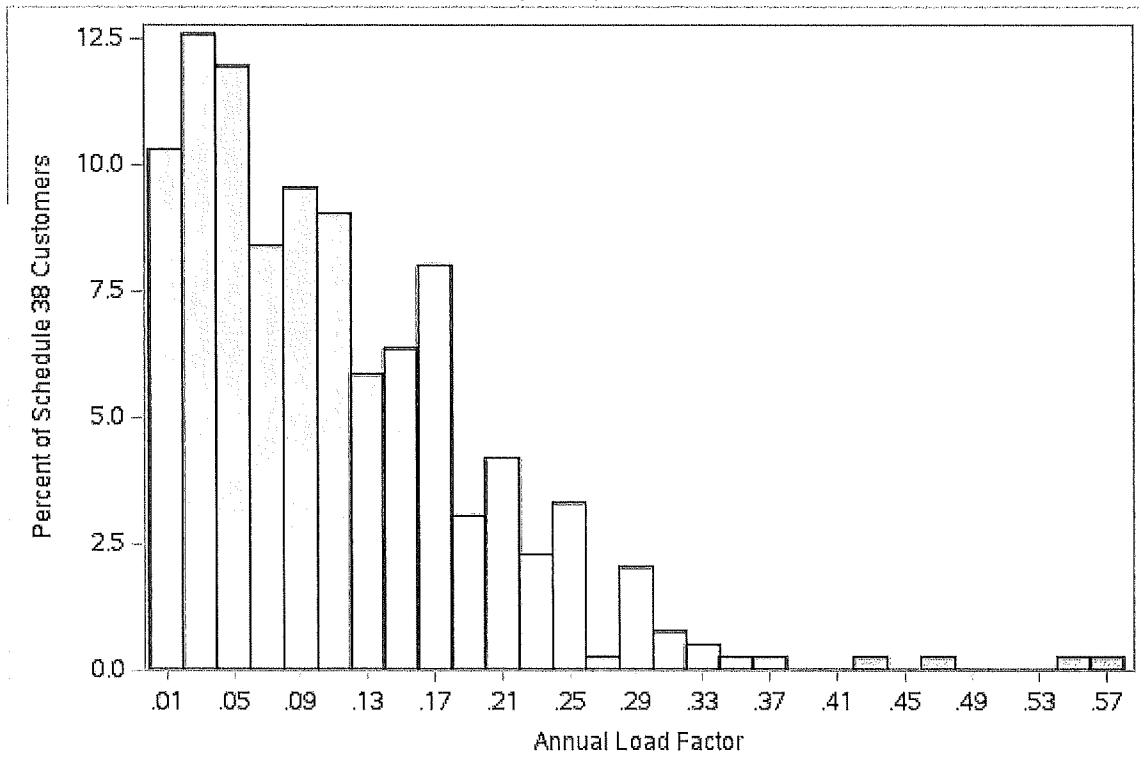
Large Non-Residential Optional Time-of-Day Standard Service (Schedule 38)

There were 390 customers on Schedule 38 in 2018. One-third of customers are places of public assembly (e.g., churches) and one-third are schools or offices. The remainder reflect a range of industries and building types. The larger customers on Schedule 38 tend to be municipal pumping services, foundries and customers in the rock and cement industry.

Monthly consumption and load factor statistics for Schedule 38 customers are detailed in the table below, followed by a visual distribution of annual load factors. The four customers with load factors greater than 0.40 are a small farm, a land development office, and downhill ski chair lift, and a sand and gravel company.

	Percentiles					
	Mean	5th	25th	50th	75th	95th
Monthly Use (kWh)	4,730	77	730	2,270	4,860	15,620
Load Factor	0.11	0.01	0.04	0.09	0.16	0.28

Distribution of Annual Load Factors (2018)



The following plot shows the average monthly usage and annual load factor for each customer on Schedule 38. Most use fewer than 10,000 kWh per year and have a load factor under 0.20, but there is not a strong relationship between the two metrics.

Average Monthly Consumption vs. Annual Load Factor (2018)

