



**Portland General Electric Company**  
 121 SW Salmon Street • Portland, Oregon 97204  
 PortlandGeneral.com

November 30, 2016

**Electronic mail**

puc.filingcenter@state.or.us

Public Utility Commission of Oregon  
 201 High St SE, Suite 100  
 PO Box 1088  
 Salem, OR 97301

**RE: LC 66 Errata Filing**

Please find enclosed an original and one copy of an Errata to Portland General Electric Company’s 2016 Integrated Resource Plan. This Errata contains the following revisions:

1. Footnote 204: corrects a typographical error in reference to two specific portfolios. Footnote 204 is changed to read: “Excluding *Portfolios 20 and 21.*”
2. Table 13-1: corrected to reflect the final composition of the Efficient Capacity 2021 portfolio as evaluated in the IRP. The original table reflected draft assumptions and used a different convention for reporting the capacity of energy efficiency resources than was used in the final IRP (Appendix O). In addition, the original note incorrectly copied the text from note 216 on page 341. PGE corrects the note to read: “Quantities may not exactly match the annual capacity values or annual average values described below due to deployment schedules.”
3. Figure L-4: corrects the relative costs for the *Wind 2018 + Solar PV 2018* portfolio. In the original figure, the results for the *Wind 2018 + Solar PV 2018* portfolio were shown shifted upward one row.
4. Figure O-22: corrects the Energy Position (Reference Case) graph to incorporate the full deployment of energy efficiency resources, including non-cost effective energy efficiency, in Portfolio 11. This error occurred only in the final summary reporting of energy efficiency resources and did not impact the analysis. The table below summarizes the original and the corrected values associated with the energy efficiency.

	2017	2018	2019	2020	2021	2025	2030	2035	2040
Original Energy Efficiency (MWa)	13	49	84	116	145	239	328	399	467
Corrected Energy Efficiency (MWa)	20	77	131	178	219	347	465	560	651

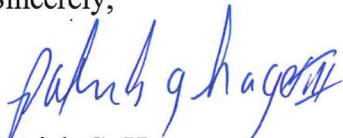
5. Figure O-24: corrects the Energy Position (Reference Case) graph to incorporate the full deployment of energy efficiency resources, including non-cost effective energy efficiency, in Portfolio 12. This error occurred only in the final summary reporting of energy efficiency resources and did not impact the analysis. The table below summarizes the original and the corrected values associated with the energy efficiency.

	2017	2018	2019	2020	2021	2025	2030	2035	2040
Original Energy Efficiency (MWa)	13	49	84	116	145	239	328	399	467
Corrected Energy Efficiency (MWa)	20	77	131	178	219	347	465	560	651

This is being filed by electronic mail with the Filing Center. It is also being served on the LC 66 service list via email only.

If you have any questions, please contact Aaron Rodehorst at (503) 464-8804. Please direct all formal inquiries to the following e-mail address: [pge.opuc.filings@pgn.com](mailto:pge.opuc.filings@pgn.com).

Sincerely,



Patrick G. Hager  
Manager, Regulatory Affairs

PGH/sp  
encls.

## **Footnote 204**

Strike Footnote 204 on page 278: Excluding *Portfolios* ~~22~~ and ~~23~~.

Replace Footnote 204 on page 278 with: Excluding *Portfolios* 20 and 21.

**Table 13-1**

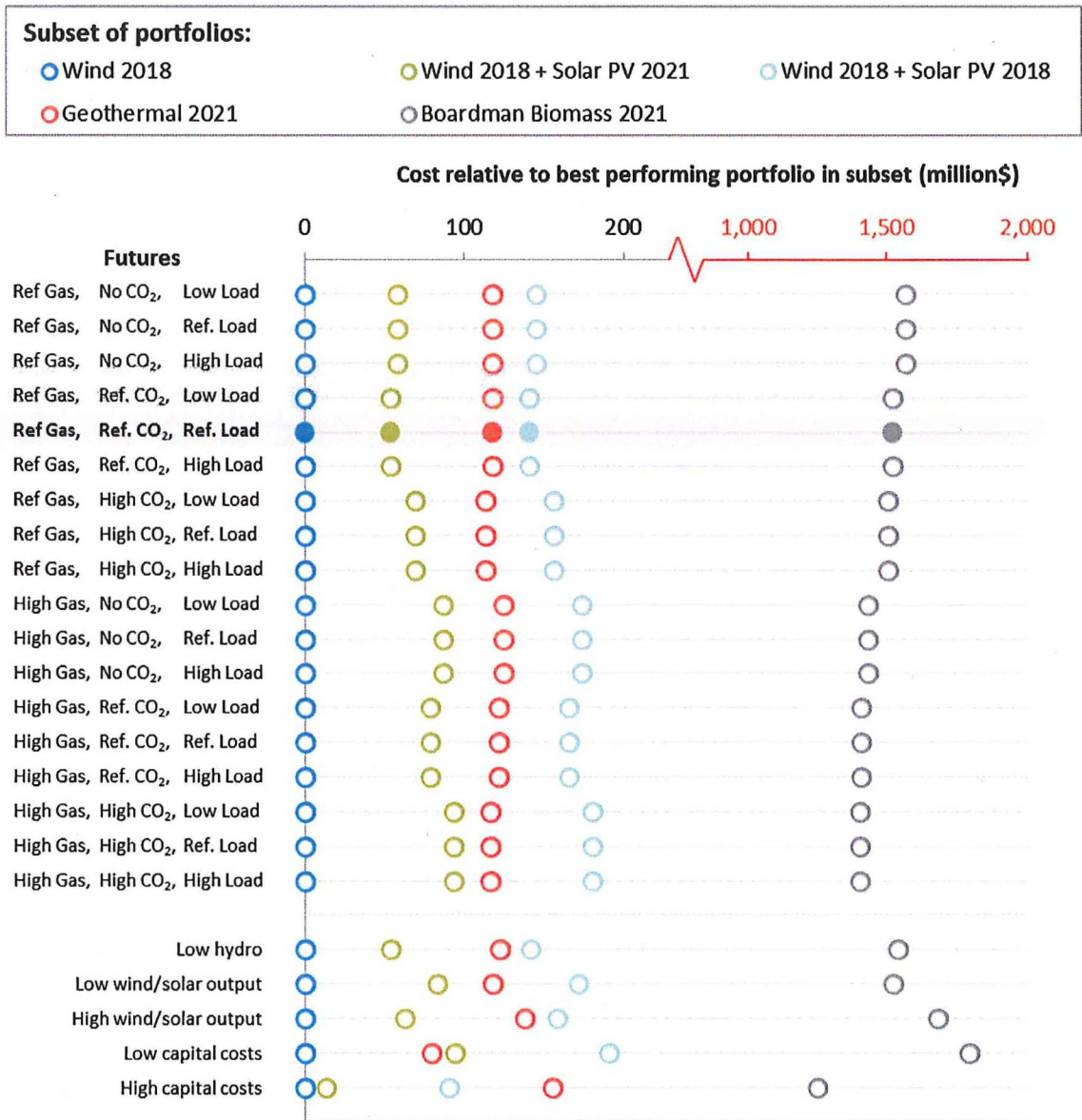
**Table 13-1: Preferred portfolio cumulative resources**

Preferred Portfolio Cumulative Resources*	Action Plan Time Horizon				
	2017	2018	2019	2020	2021
<i>Efficient Capacity 2021</i> (Capacity, MW)					
Energy Efficiency (EE)	16	61	104	144	180
Demand Response (DR)	26	29	31	69	77
Conservation Voltage Reduction (CVR)	-	0.4	0.9	1.3	1.8
PNW Wind	-	515	515	515	515
Generic Capacity	-	290	318	318	386
Efficient Capacity	-	-	-	-	389
Dispatchable Standby Generation (DSG)	4	9	13	17	22

\*Quantities may not exactly match the annual capacity values or annual average values described below due to deployment schedules.

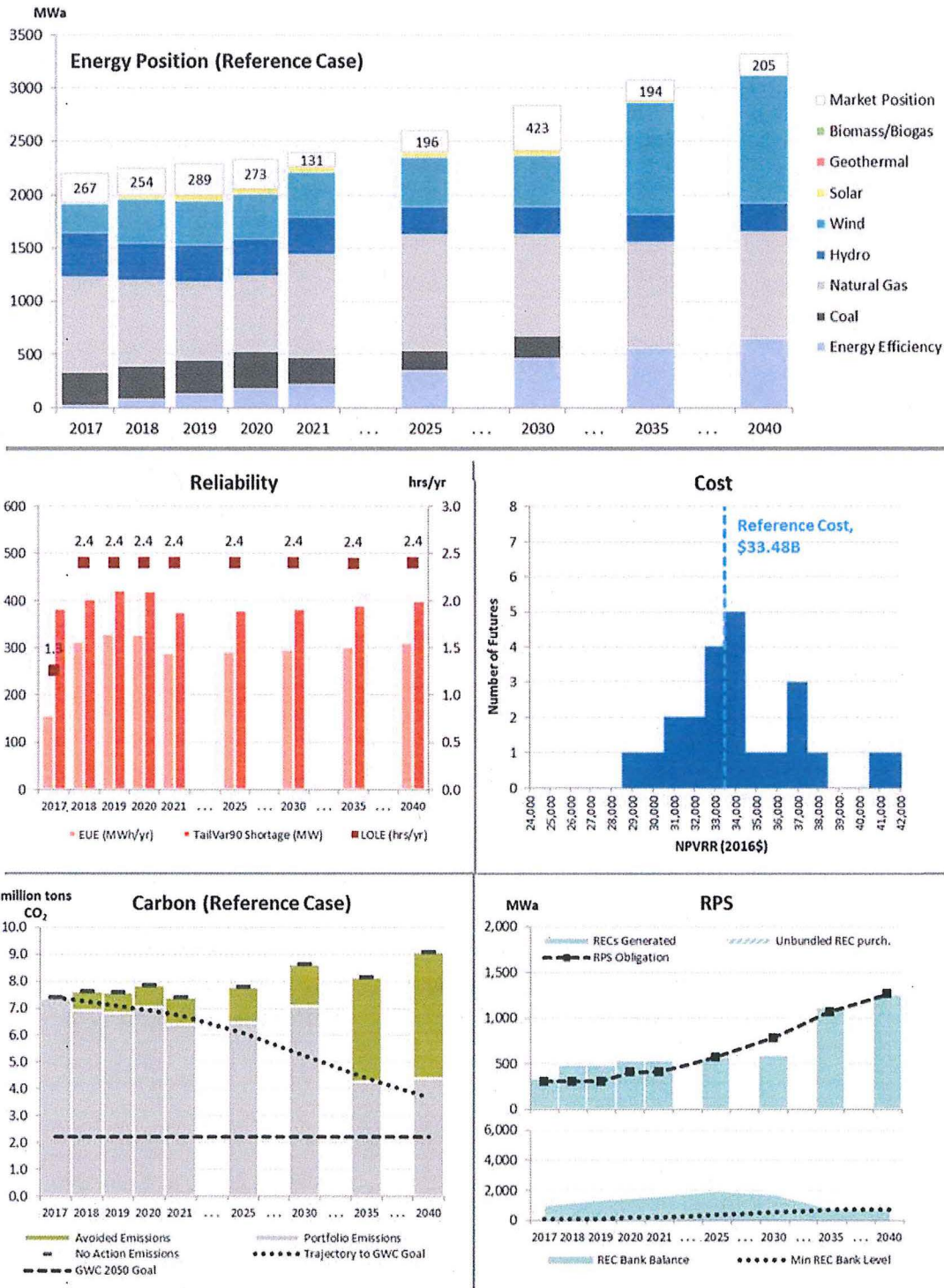
**Figure L-4**

**Figure L-4: Relative NPVRR of renewable resource option portfolios**



**Figure O-22**

**Figure O-22: Portfolio 11 output summary**



**Figure O-24**

**Figure O-24: Portfolio 12 output summary**

