



e-FILING REPORT COVER SHEET

COMPANY NAME: PacifiCorp d/b/a Pacific Power

DOES REPORT CONTAIN CONFIDENTIAL INFORMATION? No Yes If yes, submit a redacted public version (or a cover letter) by email. Submit the confidential information as directed in OAR 860-001-0070 or the terms of an applicable protective order.

Select report type: RE (Electric) RG (Gas) RW (Water) RT (Telecommunications)
 RO (Other, for example, industry safety information)

Did you previously file a similar report? No Yes, report docket number: RE 107

Report is required by: OAR 860-023-0161
 Statute
 Order

Note: A one-time submission required by an order is a compliance filing and not a report (file compliance in the applicable docket)

Other
(For example, federal regulations, or requested by Staff)

Is this report associated with a specific docket/case? No Yes, docket number: RE 107

List Key Words for this report. We use these to improve search results.

Major Event Report

Send the completed Cover Sheet and the Report in an email addressed to PUC.FilingCenter@state.or.us

Send confidential information, voluminous reports, or energy utility Results of Operations Reports to PUC Filing Center, PO Box 1088, Salem, OR 97308-1088 or by delivery service to 201 High Street SE Suite 100, Salem, OR 97301.

March 5, 2024

VIA ELECTRONIC FILING

Public Utility Commission of Oregon
Attn: Filing Center
201 High Street SE, Suite 100
Salem, OR 97301-3398

Re: RE 107—PacifiCorp Major Event Report

In compliance with OAR 860-023-0161, PacifiCorp d/b/a Pacific Power (PacifiCorp) submits the enclosed report describing a major event that occurred February 3-4, 2024, in the Willamette Valley.

PacifiCorp requests to exclude the outage information for this event from both its network performance reporting and customer guarantee failure payments.

If you require further information regarding this report, please contact Kevin Benson, Director, Asset Risk, at (541) 213-1990.

Sincerely,



Matthew McVee
Vice President, Regulatory Policy and Operations

Enclosures

Cc: Heide Caswell/Administrator, Utility Safety, Reliability, and Security Division

Report to the Oregon Public Utility Commission
Electric Service Reliability - Major Event Report

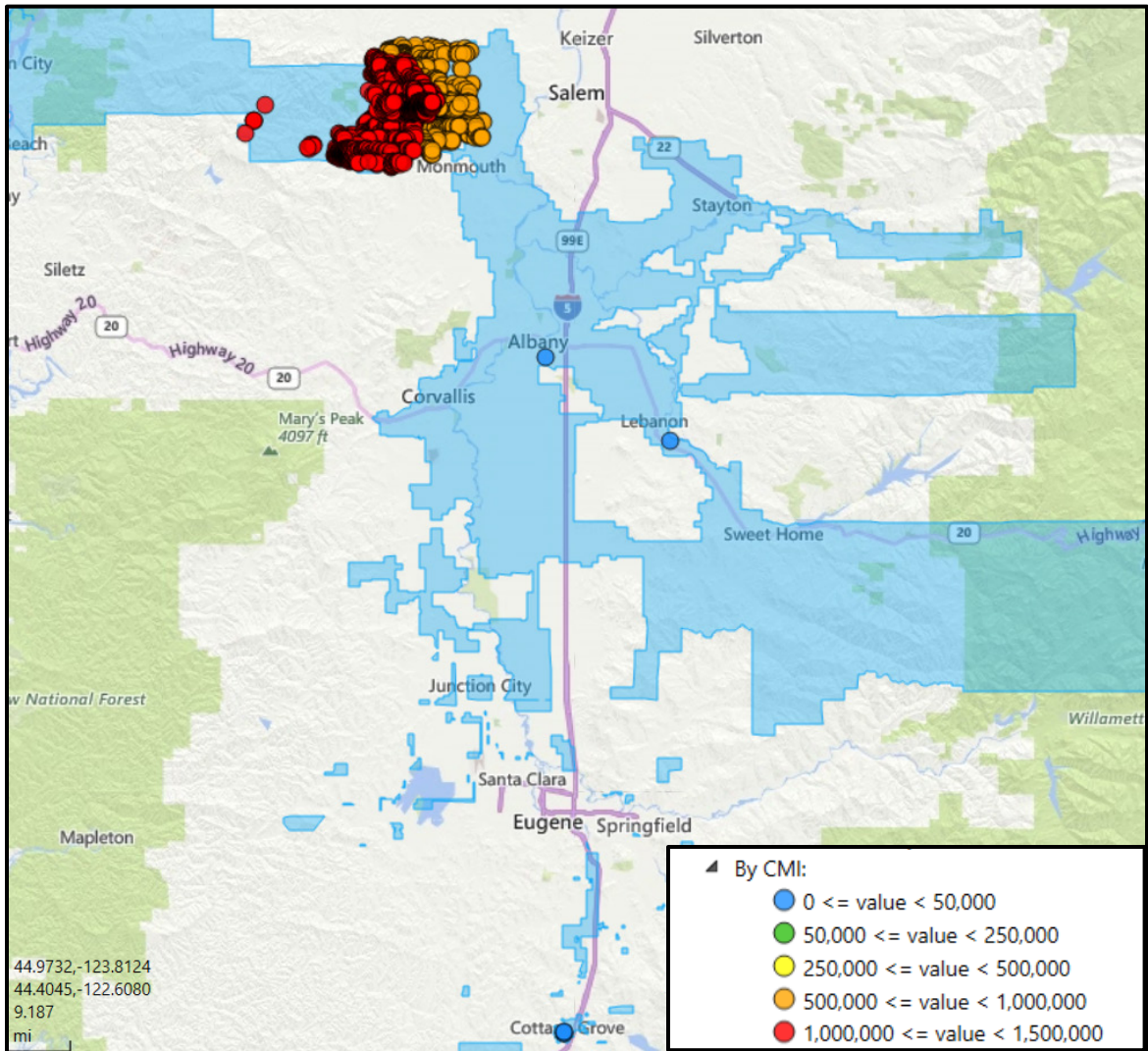
Event Date: February 3-4, 2024
 Date Submitted: March 5, 2024
 Primary Affected Locations: Willamette Valley, Oregon
 Primary Cause: Loss of Supply
 Exclude from Reporting Status: Yes
 Report Prepared by: Tia Solis
 Report Approved by: Kevin Benson

Event Customer Impact and Outage Summary

Event Outage Summary	
# Interruptions (sustained)	7
Total Customer Interrupted (sustained)	11,057
Total Customer Minutes Lost	4,731,254
State Event SAIDI	7.42 Minutes
CAIDI	428
Major Event Start	2/3/24 9:30 AM
Major Event End	2/4/24 9:30 AM

Area Outages and Restoration Details

On February 3, 2024, Willamette Valley, Oregon experienced a major event due to a squirrel entering Dallas substation causing a transformer to blow, damaging circuit 4M100. There were damaged insulators on the bus, CB 4M100 was damaged beyond repair, and the high side fuses were blown on both transformers. An on-call manager requested engineering to be engaged to look at possible alternate feed options. The on-call manager also requested ARCOS be ran for a crew to assist at time of call to assist with any switching opportunities. Step restoration was performed restoring 716 customers at 12:53 p.m. by utilizing alternate feed from CB4M22 out of Independence substation. Repairs were completed at 4:29 p.m. and restoration began, restoring all customers by 6:50 p.m. The event began at 9:30 a.m. affecting service to 11,057 customers and affected feeds to four substations serving a total of seven circuits. The duration of outages ranged from 2 minutes to 9 hours and 13 minutes.



Willamette Valley CML February 3, 2024, at 09:30 to February 4, 2024, at 09:30

Restoration Intervals

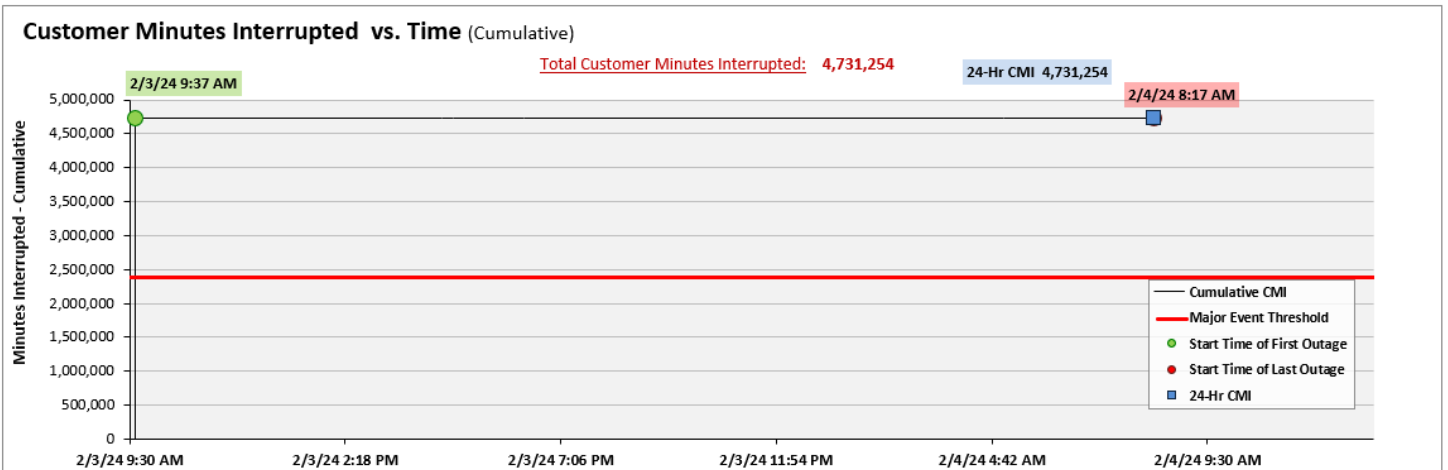
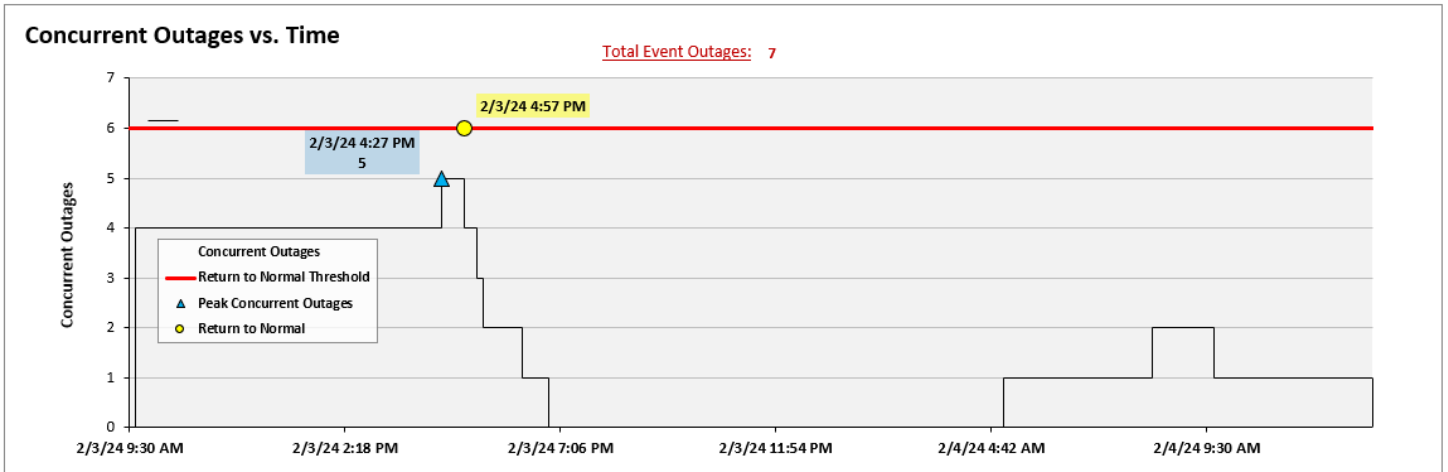
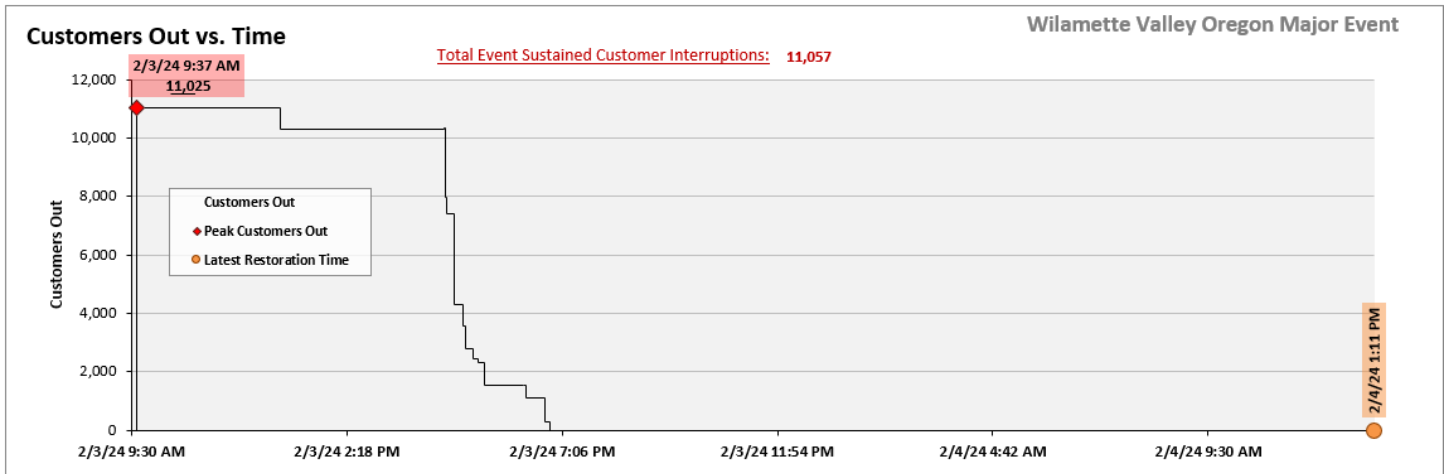
Total Customer Sustained Outage Events	< 3 Hrs.	3 – 24 Hrs.	24+ Hrs.
11,057	21	11,036	0

Major Event Declaration

PacifiCorp designates these events and the consequences thereof a major event in accordance with OAR 860-023-0161. This is a major event because it exceeded the design or operating limits of the system, and the Major Event Threshold for Oregon as calculated annually by the company according to IEEE 1366-2022 methodology (commonly referred to as the 2.5 beta method). The company’s 2024 Oregon reliability threshold is 4,984,779 customer minutes lost, excluding EFR, (7.81 Oregon SAIDI minutes) in a 24-hour period.

Event Details

Wilamette Valley Oregon Major Event



SAIDI, SAIFI, CAIDI by Reliability Reporting Region

Please see the attached system-generated reports.

PacifiCorp Major Event Report
Customer Analysis

Willamette Valley, OR		Customer Analysis 2/3/2024 through 2/4/2024					Customers Restored by Intervals								Major Event Only - metric by operating area customer counts		
<i>PacifiCorp Major Events Report Customer Analysis*</i>		Sustained Customers Off	% Sustained Customers Off	CML	Number of Sustained Interruptions	Customer Count	< 5 min	5 min - 3 hrs	3 hrs - 24 hrs	24 hrs - 48 hrs	48 hrs - 72 hrs	72 hrs - 96 hrs	96 + hrs	% Sustained Customers Restored in 3 Hours PS4	SAIDI	SAIFI	CAIDI
PC	PACIFICORP	11,057	1%	4,731,254	7	2,089,798	3,603	21	11,036	-	-	-	-	0%	2.26	0.005	428
PP	Pacific Power	11,057	1%	4,731,254	7	823,337	3,603	21	11,036	-	-	-	-	0%	5.75	0.013	428
OR	Oregon	11,057	2%	4,731,254	7	638,000	3,603	21	11,036	-	-	-	-	0%	7.42	0.005	428
OR	ALBANY	10	0%	2,814	1	33,763	-	-	10	-	-	-	-	0%	0.08	0.000	281
OR	COTTAGE GROVE/J.CITY	21	0%	2,249	1	11,634	-	21	-	-	-	-	-	100%	0.19	0.002	107
OR	DALLAS/INDEPENDENCE	11,025	66%	4,725,898	4	16,594	3,603	-	11,025	-	-	-	-	0%	284.80	0.664	429
OR	LEBANON	1	0%	294	1	21,683	-	-	1	-	-	-	-	0%	0.01	0.000	294

*Only current event specific metric impact shown. Does not include values from other events which may have occurred in other regions during the same time period.

Data as of
2/6/2024

PacifiCorp Major Event Report

SSC by State Analysis

	Willamette Valley, OR	Event 02/03/24 through 02/04/24						Month 02/01/24 through 02/29/24						YTD FY2025 01/01/24 through 02/29/24					
		Major Events Included			Major Event Excluded			Major Events Included			Major Events Excluded*			Major Events Included			Major Events Excluded*		
		SAIDI	SAIFI	CAIDI	SAIDI	SAIFI	CAIDI	SAIDI	SAIFI	CAIDI	SAIDI	SAIFI	CAIDI	SAIDI	SAIFI	CAIDI	SAIDI	SAIFI	CAIDI
	PacifiCorp Major Events Report SSC by State																		
PC	PACIFICORP	3.55	0.011	326	1.29	0.006	230	4.36	0.014	316	2.09	0.008	246	69.94	0.175	399	11.06	0.075	148
PP	Pacific Power	7.59	0.020	389	1.84	0.006	304	7.97	0.021	383	2.23	0.007	301	166.06	0.348	478	16.61	0.093	179
OR	Oregon	9.44	0.024	400	2.03	0.006	322	9.79	0.025	397	2.38	0.007	325	206.08	0.352	585	16.65	0.076	219
OR	ALBANY	0.00	0.000	281	-	-	-	0.00	0.000	195	0.00	0.000	50	1.52	0.016	93	0.37	0.002	148
OR	BEND/REDMOND	0.00	0.000	47	0.00	0.000	47	0.01	0.000	91	0.01	0.000	91	1.33	0.007	186	0.16	0.002	67
OR	CLATSOP (ASTORIA)	0.00	0.000	105	0.00	0.000	105	0.01	0.000	141	0.01	0.000	141	7.68	0.033	236	1.00	0.003	322
OR	COOS BAY/COQUILLE	0.08	0.001	75	0.08	0.001	75	0.08	0.001	75	0.08	0.001	75	1.57	0.013	117	1.03	0.010	105
OR	CORVALLIS	0.00	0.000	235	0.00	0.000	235	0.00	0.000	187	0.00	0.000	187	10.95	0.058	189	0.15	0.001	174
OR	COTTAGE GROVE/J.CITY	0.00	0.000	107	-	-	-	0.27	0.000	637	0.27	0.000	681	80.85	0.041	1,984	0.61	0.002	300
OR	DALLAS/INDEPENDENCE	7.41	0.017	429	0.00	0.000	251	7.41	0.017	429	0.00	0.000	114	7.57	0.018	420	0.11	0.001	165
OR	ENTERPRISE	-	-	-	-	-	-	-	-	-	-	-	-	0.09	0.001	165	0.02	0.000	162
OR	GRANTS PASS	1.90	0.005	389	1.90	0.005	389	1.91	0.005	389	1.91	0.005	389	3.07	0.011	269	2.68	0.010	278
OR	HERMISTON	-	-	-	-	-	-	-	-	-	-	-	-	0.08	0.000	214	0.07	0.000	217
OR	HOOD RIVER	-	-	-	-	-	-	0.01	0.000	83	0.01	0.000	83	0.39	0.002	210	0.34	0.001	286
OR	KLAMATH FALLS	0.01	0.000	85	0.01	0.000	85	0.03	0.000	113	0.03	0.000	113	4.74	0.010	492	3.56	0.008	467
OR	LAKEVIEW	-	-	-	-	-	-	-	-	-	-	-	-	0.01	0.000	129	0.01	0.000	129
OR	LEBANON	0.03	0.000	172	0.02	0.000	171	0.03	0.000	159	0.03	0.000	158	42.56	0.033	1,292	0.95	0.003	299
OR	LINCOLN CITY	-	-	-	-	-	-	0.01	0.000	114	0.01	0.000	114	9.94	0.028	356	1.57	0.012	131
OR	MADRAS	-	-	-	-	-	-	-	-	-	-	-	-	0.06	0.000	129	0.06	0.000	130
OR	MEDFORD	0.01	0.000	204	0.01	0.000	204	0.01	0.000	196	0.01	0.000	196	3.26	0.010	335	1.97	0.006	353
OR	PENDLETON	-	-	-	-	-	-	0.00	0.000	99	0.00	0.000	99	0.01	0.000	117	0.00	0.000	81
OR	PORTLAND	-	-	-	-	-	-	0.00	0.000	224	0.00	0.000	224	25.56	0.052	489	0.73	0.007	107
OR	ROSEBURG/MYRTLECREEK	0.00	0.000	88	0.00	0.000	88	0.01	0.000	97	0.01	0.000	97	2.15	0.011	197	1.14	0.007	162
OR	STAYTON	-	-	-	-	-	-	-	-	-	-	-	-	2.64	0.008	343	0.13	0.001	239
OR	WALLA WALLA	-	-	-	-	-	-	0.00	0.000	263	0.00	0.000	263	0.04	0.000	179	0.00	0.000	247

*may include other regional major event exclusions during the same period. Operating areas are calculated by the state frozen customer count metrics.

Data as of
2/6/2024