



e-FILING REPORT COVER SHEET

COMPANY NAME: PacifiCorp d/b/a Pacific Power

DOES REPORT CONTAIN CONFIDENTIAL INFORMATION? No Yes If yes, submit a redacted public version (or a cover letter) by email. Submit the confidential information as directed in OAR 860-001-0070 or the terms of an applicable protective order.

Select report type: RE (Electric) RG (Gas) RW (Water) RT (Telecommunications)
 RO (Other, for example, industry safety information)

Did you previously file a similar report? No Yes, report docket number: RE 107

Report is required by: OAR 860-023-0161
 Statute
 Order

Note: A one-time submission required by an order is a compliance filing and not a report (file compliance in the applicable docket)

Other
(For example, federal regulations, or requested by Staff)

Is this report associated with a specific docket/case? No Yes, docket number: RE 107

List Key Words for this report. We use these to improve search results.

Major Event Report

Send the completed Cover Sheet and the Report in an email addressed to PUC.FilingCenter@state.or.us

Send confidential information, voluminous reports, or energy utility Results of Operations Reports to PUC Filing Center, PO Box 1088, Salem, OR 97308-1088 or by delivery service to 201 High Street SE Suite 100, Salem, OR 97301.

March 1, 2024

VIA ELECTRONIC FILING

Public Utility Commission of Oregon
Attn: Filing Center
201 High Street SE, Suite 100
Salem, OR 97301-3398

Re: RE 107—PacifiCorp Major Event Report

In compliance with OAR 860-023-0161, PacifiCorp d/b/a Pacific Power (PacifiCorp) submits the enclosed report describing a major event that occurred January 13-19, 2024, due to a winter storm that moved through PacifiCorp's service territory.

PacifiCorp requests to exclude the outage information for this event from both its network performance reporting and customer guarantee failure payments.

If you require further information regarding this report, please contact Kevin Benson, Director, Asset Risk, at (541) 213-1990.

Sincerely,



Matthew McVee
Vice President, Regulatory Policy and Operations

Enclosures

Cc: Heide Caswell/Administrator, Utility Safety, Reliability, and Security Division

Report to the Oregon Public Utility Commission
Electric Service Reliability - Major Event Report

Event Date: January 13-19, 2024
Date Submitted: March 1, 2024
Primary Affected Locations: Oregon
Primary Cause: Winter Storm
Exclude from Reporting Status: Yes
Report Prepared by: Tia Solis
Report Approved by: Kevin Benson

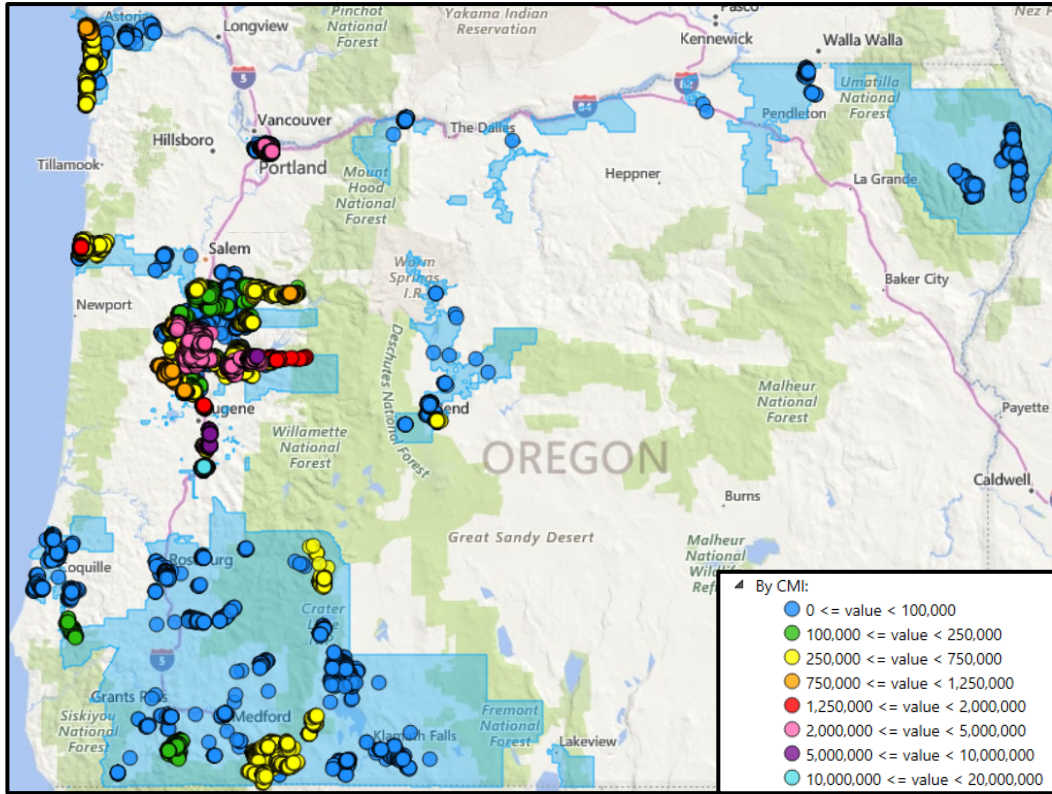
Event Customer Impact and Outage Summary

Event Outage Summary	
# Interruptions (sustained)	1,017
Total Customer Interrupted (sustained)	162,590
Total Customer Minutes Lost	115,396,548
State Event SAIDI	182.01 Minutes
CAIDI	710
Major Event Start	1/13/24 2:42 AM
Major Event End	1/19/24 11:24 PM

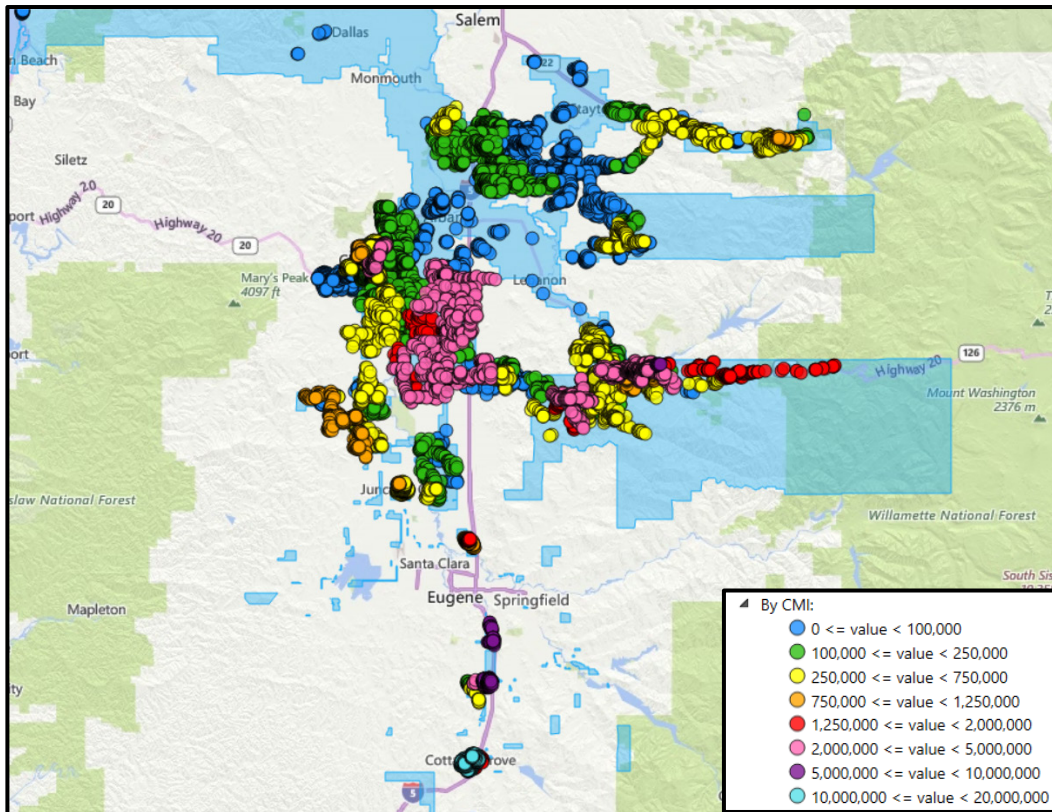
Area Outages and Restoration Details

On January 13, 2024, the state of Oregon experienced a major event due to a winter storm. The event began at 2:42 a.m. affecting service to 162,590 customers and feeds to 126 substations serving a total of 204 circuits. The duration of outages ranged from 11 minutes to 170 hours. The effects of the snow began damaging vegetation and impacting electric infrastructure. The snow accumulated on trees and caused branches and trees to give way, downing lines across the area. As the weather continued, further and continual impacts to electric infrastructure were experienced. During the event, tree crews cleared interfering vegetation while line crews followed, making repairs, and restoring customers. Approximately, 38% of customer minutes lost (CML) was related to tree damage and 41% related to weather with Cottage Grove having the greatest impact at 44% of CML. The below figure shows the CML through Oregon over the course of the major event.

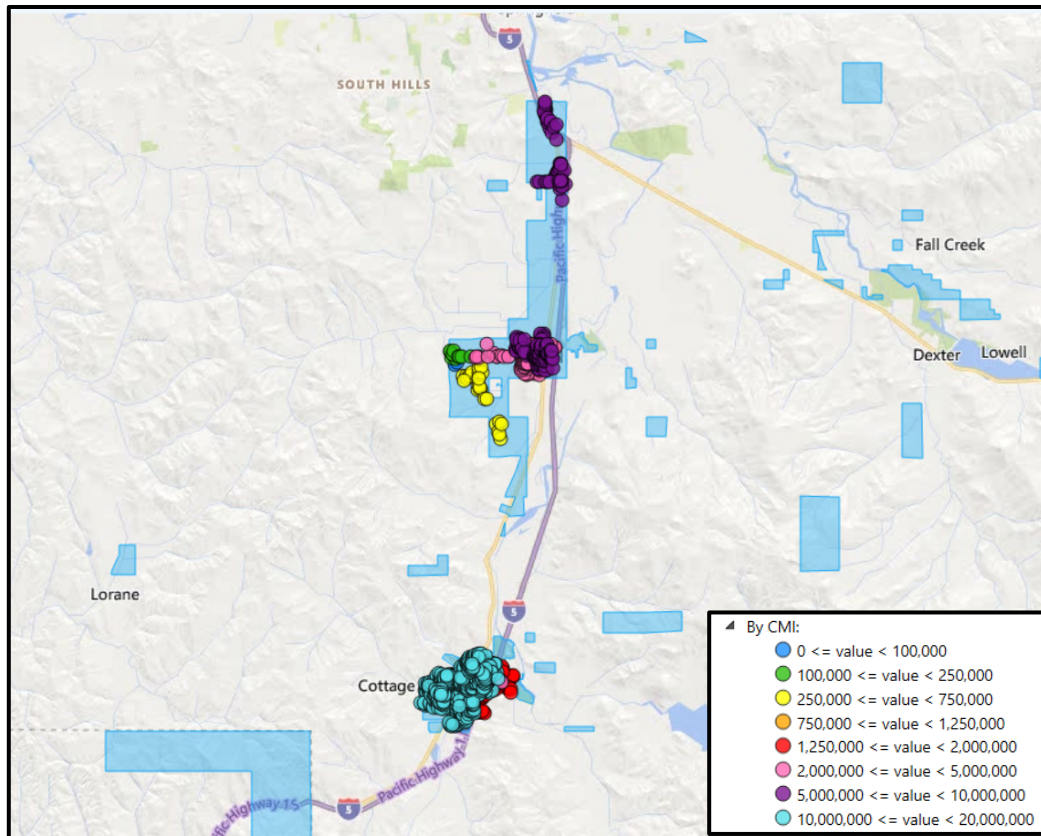
Oregon CML January 13 at 02:42 to January 19 at 23:24



Lebanon, Oregon CML January 13 at 02:42 to January 19 at 23:24



Cottage Grove, Oregon CML January 13 at 02:42 to January 19 at 23:24



Restoration Intervals

Total Customer Sustained Outage Events	< 3 Hrs.	3 – 24 Hrs.	24+ Hrs.
162,950	77,933	64,453	20,204

Weather

Multiple winter systems moved into the Pacific Power service area January 12-18. The primary impacts were felt on Saturday, January 13, with a period of freezing rain, sleet, and snow across portions of North and Central Wires.

During January 12-13, a strong winter storm crossed the Pacific Power service territory. Ice accumulations in the Willamette Valley, Lincoln City, and Clatsop districts led to widespread system impacts. Snow and sleet accumulated in metro Portland with impactful winds. Figure 3 shows maximum wind gusts for northern Oregon for January 13, while Figure 4 shows maximum wind gusts for central and southern Oregon, January 13.

Snow also fell January 12-13, in Hood River, Central Oregon, and many parts of South Wires. Heavy rain fell over the snow packed mountains in the Roseburg area, leading to flooding and impassible roads. Heavy rain also impacted Grants Pass and Crescent City districts. The first storm cleared on Sunday, January 14, leaving unusually cold weather, especially Willamette

Valley and locations east. Additional light to moderate freezing rain, along with strong winds, impacted the Portland district, on Tuesday, January 16, and again on Thursday, January 18.

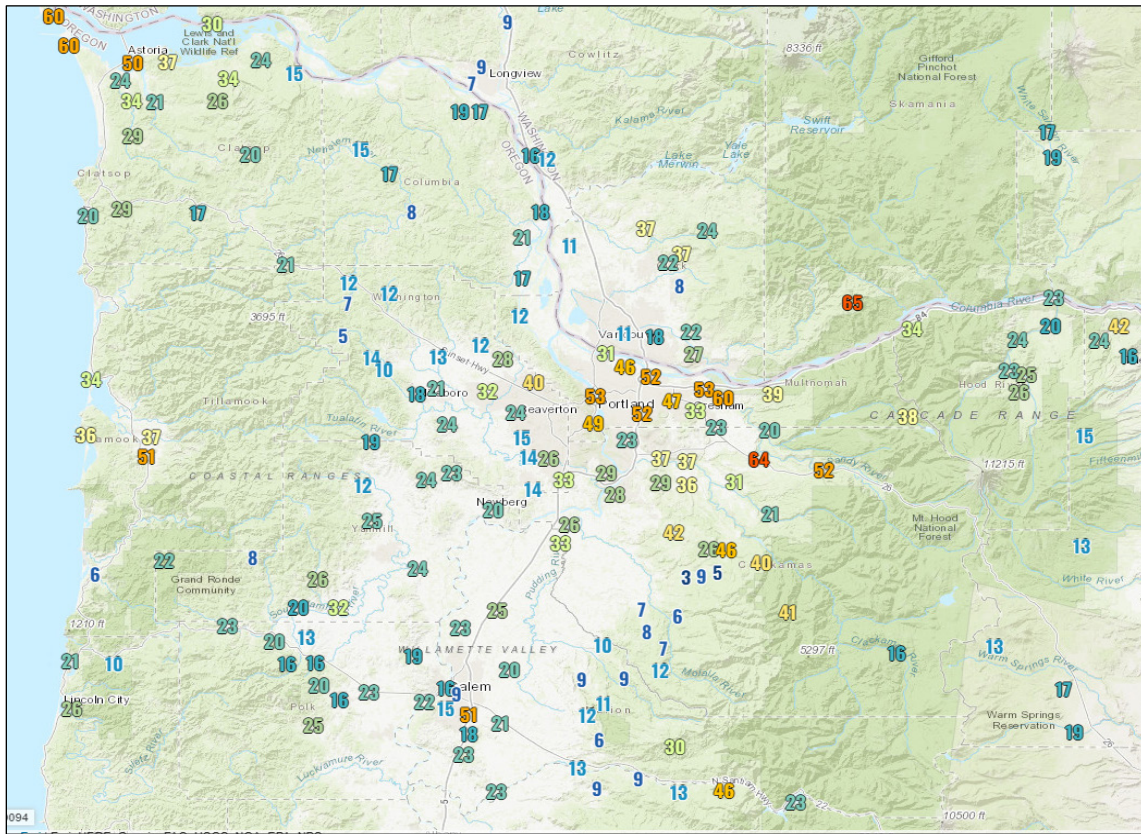


Figure 3 Maximum wind gust speed, January 13, 2024, for Northern Oregon

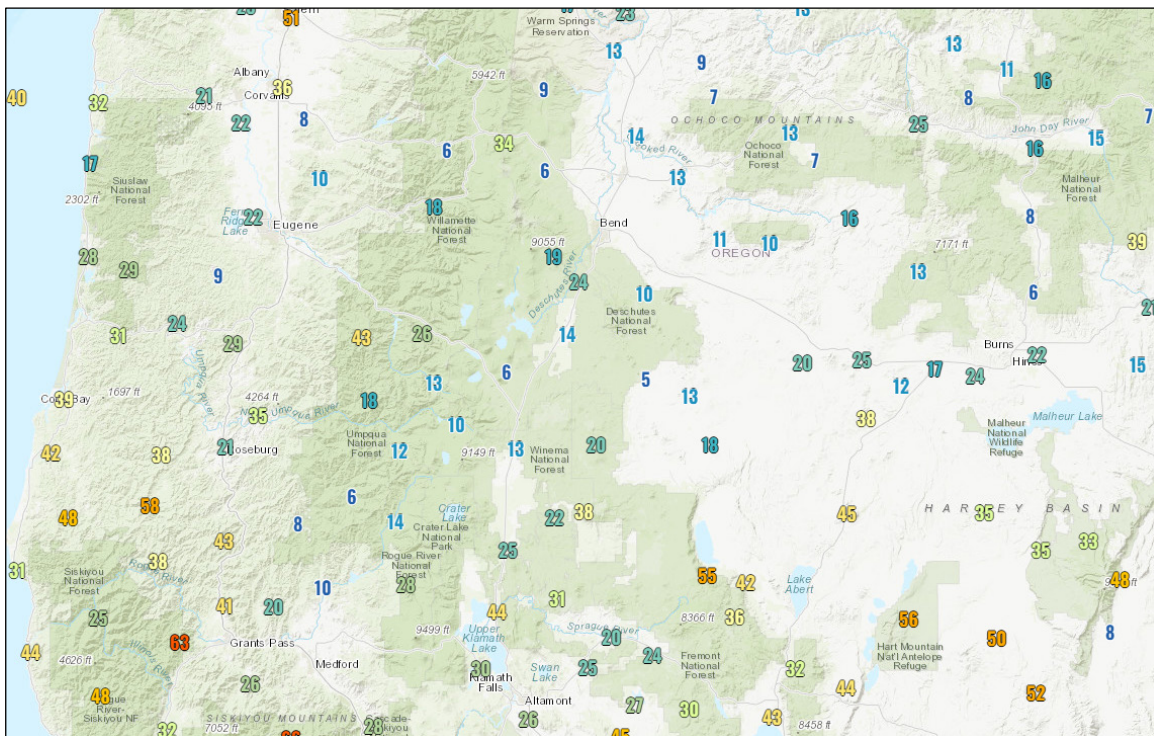
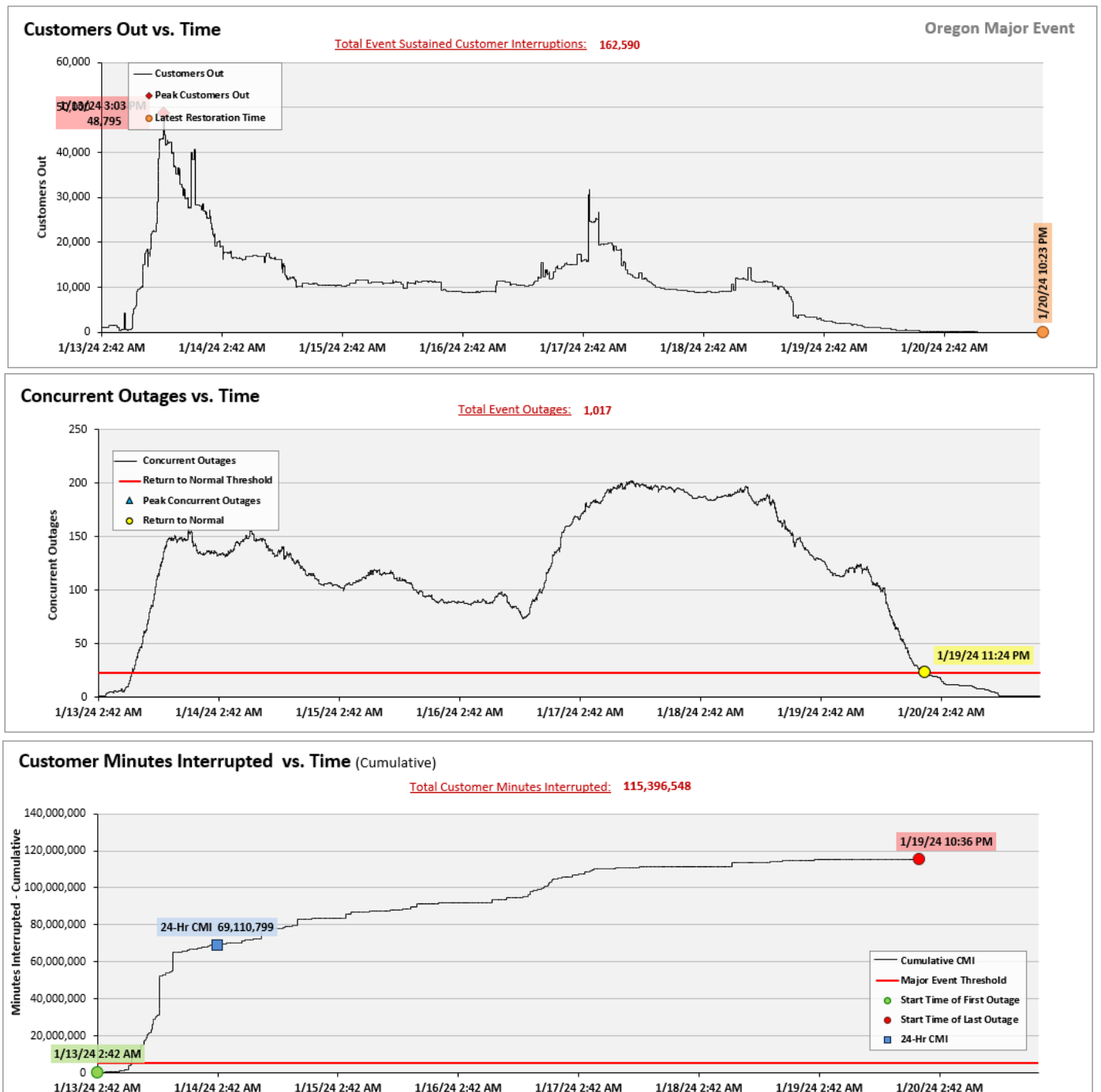


Figure 4 Maximum wind gust speed, January 12, 2024, for Central and Southern Oregon

Major Event Declaration

PacifiCorp designates these events and the consequences thereof a major event in accordance with OAR 860-023-0161. This is a major event because it exceeded the design or operating limits of the system, and the Major Event Threshold for Oregon as calculated annually by the company according to IEEE 1366-2022 methodology (commonly referred to as the 2.5 beta method). The company's 2024 Oregon reliability threshold is 4,984,779 customer minutes lost, excluding EFR, (7.81 Oregon SAIDI minutes) in a 24-hour period.

Event Details



SAIDI, SAIFI, CAIDI by Reliability Reporting Region

Please see the attached system-generated reports.

PacifiCorp Major Event Report

Customer Analysis

	Oregon	Customer Analysis 1/13/2024 through 1/19/2024					Customers Restored by Intervals									Major Event Only - metric by operating area customer counts		
		Sustained Customers Off	% Sustained Customers Off	CML	Number of Sustained Interruptions	Customer Count	< 5 min	5 min - 3 hrs	3 hrs - 24 hrs	24 hrs - 48 hrs	48 hrs - 72 hrs	72 hrs - 96 hrs	96 + hrs	% Sustained Customers Restored in 3 Hours PS4	SAIDI	SAIFI	CAIDI	
PC	PACIFICORP	165,956	8%	116,808,439	1,020	2,089,798	36,834	79,610	66,071	10,704	3,264	1,095	5,212	48%	55.89	0.079	704	
PP	Pacific Power	165,956	20%	116,808,439	1,020	823,337	36,834	79,610	66,071	10,704	3,264	1,095	5,212	48%	141.87	0.202	704	
OR	Oregon	165,200	26%	116,124,506	1,015	638,000	36,834	79,603	65,322	10,704	3,264	1,095	5,212	48%	182.01	0.079	703	
OR	ALBANY	8,825	26%	733,787	35	33,763	-	7,962	828	27	8	-	-	90%	21.73	0.261	83	
OR	BEND/REDMOND	3,025	4%	747,565	16	73,738	-	116	2,909	-	-	-	-	4%	10.14	0.041	247	
OR	CLATSOP (ASTORIA)	18,794	73%	4,266,637	46	25,652	972	8,971	9,757	66	-	-	-	48%	166.33	0.733	227	
OR	COOS BAY/COQUILLE	2,310	9%	346,192	28	26,459	3,256	1,392	918	-	-	-	-	60%	13.08	0.087	150	
OR	CORVALLIS	36,340	119%	6,894,570	77	30,477	4	28,936	7,105	289	8	-	2	80%	226.22	1.192	190	
OR	COTTAGE GROVE/J.CITY	24,685	212%	51,191,877	172	11,634	192	8,372	6,738	3,491	697	604	4,783	34%	4,400.20	2.122	2,074	
OR	DALLAS/INDEPENDENCE	46	0%	33,563	10	16,594	-	1	42	3	-	-	-	2%	2.02	0.003	730	
OR	ENTERPRISE	284	5%	46,930	4	5,732	-	109	175	-	-	-	-	38%	8.19	0.050	165	
OR	GRANTS PASS	1,143	2%	250,166	20	52,698	2,198	190	953	-	-	-	-	17%	4.75	0.022	219	
OR	HERMISTON	10	0%	1,437	3	5,307	-	5	5	-	-	-	-	50%	0.27	0.002	144	
OR	HOOD RIVER	438	5%	34,300	5	9,728	-	393	45	-	-	-	-	90%	3.53	0.045	78	
OR	KLAMATH FALLS	1,280	3%	754,385	37	38,281	2,373	641	317	322	-	-	-	50%	19.71	0.033	589	
OR	LEBANON	18,970	87%	26,541,879	232	21,683	10,273	3,582	9,905	2,198	2,379	479	427	19%	1,224.09	0.875	1,399	
OR	LINCOLN CITY	10,185	81%	5,343,904	69	12,547	10,462	5,467	2,727	1,921	70	-	-	54%	425.91	0.812	525	
OR	MADRAS	25	0%	2,940	9	18,455	988	22	3	-	-	-	-	88%	0.16	0.001	118	
OR	MEDFORD	2,650	3%	821,040	38	92,175	1,036	1,856	710	73	-	11	-	70%	8.91	0.029	310	
OR	PENDLETON	12	0%	2,611	2	13,485	-	1	11	-	-	-	-	8%	0.19	0.001	218	
OR	PORTLAND	29,022	33%	15,846,007	136	86,798	2,746	6,804	20,281	1,937	-	-	-	23%	182.56	0.334	546	
OR	ROSEBURG/MYRTLECREEK	2,467	6%	641,047	30	43,986	2,334	1,867	413	187	-	-	-	76%	14.57	0.056	260	
OR	STAYTON	4,555	32%	1,600,172	45	14,029	-	2,782	1,480	190	102	1	-	61%	114.06	0.325	351	
OR	WALLA WALLA	134	6%	23,497	1	2,333	-	134	-	-	-	-	-	100%	10.07	0.057	175	

*Only current event specific metric impact shown. Does not include values from other events which may have occurred in other regions during the same time period.

Data as of
2/8/2024

PacifiCorp Major Event Report

SSC by State Analysis

	Oregon	Event 01/13/24 through 01/19/24						Month 01/01/24 through 01/31/24						YTD FY2025 01/01/24 through 01/31/24					
		Major Events Included			Major Event Excluded			Major Events Included			Major Events Excluded*			Major Events Included			Major Events Excluded*		
		SAIDI	SAIFI	CAIDI	SAIDI	SAIFI	CAIDI	SAIDI	SAIFI	CAIDI	SAIDI	SAIFI	CAIDI	SAIDI	SAIFI	CAIDI	SAIDI	SAIFI	CAIDI
	PacifiCorp Major Events Report SSC by State																		
PC	PACIFICORP	58.04	0.098	590	2.15	0.019	113	65.59	0.161	406	8.97	0.066	135	65.59	0.161	406	8.97	0.066	135
PP	Pacific Power	143.48	0.220	653	1.61	0.018	88	158.09	0.327	484	14.38	0.085	168	158.09	0.327	484	14.38	0.085	168
OR	Oregon	182.20	0.263	694	0.19	0.004	51	196.28	0.328	599	14.27	0.069	208	196.28	0.328	599	14.27	0.069	208
OR	ALBANY	1.15	0.014	83	-	-	-	1.51	0.016	93	0.36	0.002	148	1.51	0.016	93	0.36	0.002	148
OR	BEND/REDMOND	1.17	0.005	247	-	-	-	1.32	0.007	188	0.15	0.002	66	1.32	0.007	188	0.15	0.002	66
OR	CLATSOP (ASTORIA)	6.69	0.029	227	-	-	-	7.68	0.033	236	0.99	0.003	325	7.68	0.033	236	0.99	0.003	325
OR	COOS BAY/COQUILLE	0.54	0.004	150	-	-	-	1.49	0.012	120	0.95	0.009	108	1.49	0.012	120	0.95	0.009	108
OR	CORVALLIS	10.81	0.057	190	-	-	-	10.95	0.058	189	0.15	0.001	174	10.95	0.058	189	0.15	0.001	174
OR	COTTAGE GROVE/J.CITY	80.24	0.039	2,074	-	-	-	80.58	0.040	1,998	0.34	0.002	207	80.58	0.040	1,998	0.34	0.002	207
OR	DALLAS/INDEPENDENCE	0.05	0.000	730	-	-	-	0.16	0.001	223	0.11	0.001	166	0.16	0.001	223	0.11	0.001	166
OR	ENTERPRISE	0.07	0.000	165	-	-	-	0.09	0.001	165	0.02	0.000	162	0.09	0.001	165	0.02	0.000	162
OR	GRANTS PASS	0.39	0.002	219	-	-	-	1.16	0.007	178	0.77	0.005	163	1.16	0.007	178	0.77	0.005	163
OR	HERMISTON	0.00	0.000	144	-	-	-	0.08	0.000	214	0.07	0.000	217	0.08	0.000	214	0.07	0.000	217
OR	HOOD RIVER	0.05	0.001	78	-	-	-	0.38	0.002	218	0.33	0.001	308	0.38	0.002	218	0.33	0.001	308
OR	KLAMATH FALLS	1.18	0.002	589	-	-	-	4.71	0.009	504	3.52	0.007	481	4.71	0.009	504	3.52	0.007	481
OR	LAKEVIEW	-	-	-	-	-	-	0.01	0.000	129	0.01	0.000	129	0.01	0.000	129	0.01	0.000	129
OR	LEBANON	41.60	0.030	1,399	-	-	-	42.53	0.033	1,298	0.93	0.003	306	42.53	0.033	1,298	0.93	0.003	306
OR	LINCOLN CITY	8.38	0.016	525	-	-	-	9.94	0.028	356	1.56	0.012	131	9.94	0.028	356	1.56	0.012	131
OR	MADRAS	0.00	0.000	118	-	-	-	0.06	0.000	129	0.06	0.000	130	0.06	0.000	129	0.06	0.000	130
OR	MEDFORD	1.29	0.004	310	-	-	-	3.25	0.010	336	1.96	0.006	355	3.25	0.010	336	1.96	0.006	355
OR	PENDLETON	0.00	0.000	218	-	-	-	0.01	0.000	131	0.00	0.000	52	0.01	0.000	131	0.00	0.000	52
OR	PORTLAND	25.03	0.049	508	0.19	0.004	51	25.56	0.052	489	0.72	0.007	107	25.56	0.052	489	0.72	0.007	107
OR	ROSEBURG/MYRTLECREEK	1.00	0.004	260	-	-	-	2.14	0.011	197	1.13	0.007	163	2.14	0.011	197	1.13	0.007	163
OR	STAYTON	2.51	0.007	351	-	-	-	2.64	0.008	343	0.13	0.001	239	2.64	0.008	343	0.13	0.001	239
OR	WALLA WALLA	0.04	0.000	175	-	-	-	0.04	0.000	175	0.00	0.000	149	0.04	0.000	175	0.00	0.000	149

*may include other regional major event exclusions during the same period. Operating areas are calculated by the state frozen customer count metrics.

Data as of
2/8/2024