



e-FILING REPORT COVER SHEET

COMPANY NAME: PacifiCorp d/b/a Pacific Power

DOES REPORT CONTAIN CONFIDENTIAL INFORMATION? No Yes If yes, submit a redacted public version (or a cover letter) by email. Submit the confidential information as directed in OAR 860-001-0070 or the terms of an applicable protective order.

Select report type: RE (Electric) RG (Gas) RW (Water) RT (Telecommunications)
 RO (Other, for example, industry safety information)

Did you previously file a similar report? No Yes, report docket number: RE 107

Report is required by: OAR 860-023-0161
 Statute
 Order

Note: A one-time submission required by an order is a compliance filing and not a report (file compliance in the applicable docket)

Other
(For example, federal regulations, or requested by Staff)

Is this report associated with a specific docket/case? No Yes, docket number: RE 107

List Key Words for this report. We use these to improve search results.

Major Event Report

Send the completed Cover Sheet and the Report in an email addressed to PUC.FilingCenter@state.or.us

Send confidential information, voluminous reports, or energy utility Results of Operations Reports to PUC Filing Center, PO Box 1088, Salem, OR 97308-1088 or by delivery service to 201 High Street SE Suite 100, Salem, OR 97301.

April 6, 2023

VIA ELECTRONIC FILING

Public Utility Commission of Oregon
Attn: Filing Center
201 High Street SE, Suite 100
Salem, OR 97301-3398

Re: RE 107—PacifiCorp Major Event Report

In compliance with OAR 860-023-0161, PacifiCorp d/b/a Pacific Power (PacifiCorp) submits the enclosed report describing a major event that occurred March 2-3, 2023, due to an equipment failure on the 115-kilovolt transmission line from Tillamook to Astoria.

PacifiCorp requests to exclude the outage information for this event from both its network performance reporting and customer guarantee failure payments.

If you require further information regarding this report, please contact Kevin Benson, Director, Asset Risk, at (541) 213-1990.

Sincerely,



Matthew McVee
Vice President, Regulatory Policy and Operations

Enclosures

cc: Heide Caswell/Administrator, Utility Safety, Reliability, and Security Division

Report to the Oregon Public Utility Commission
Electric Service Reliability - Major Event Report

Event Date: March 2-3, 2023
Date Submitted: April 6, 2023
Primary Affected Locations: Oregon
Primary Cause: Loss of Transmission
Exclude from Reporting Status: Yes
Report Prepared by: Tia Solis
Report Approved by: Kevin Benson

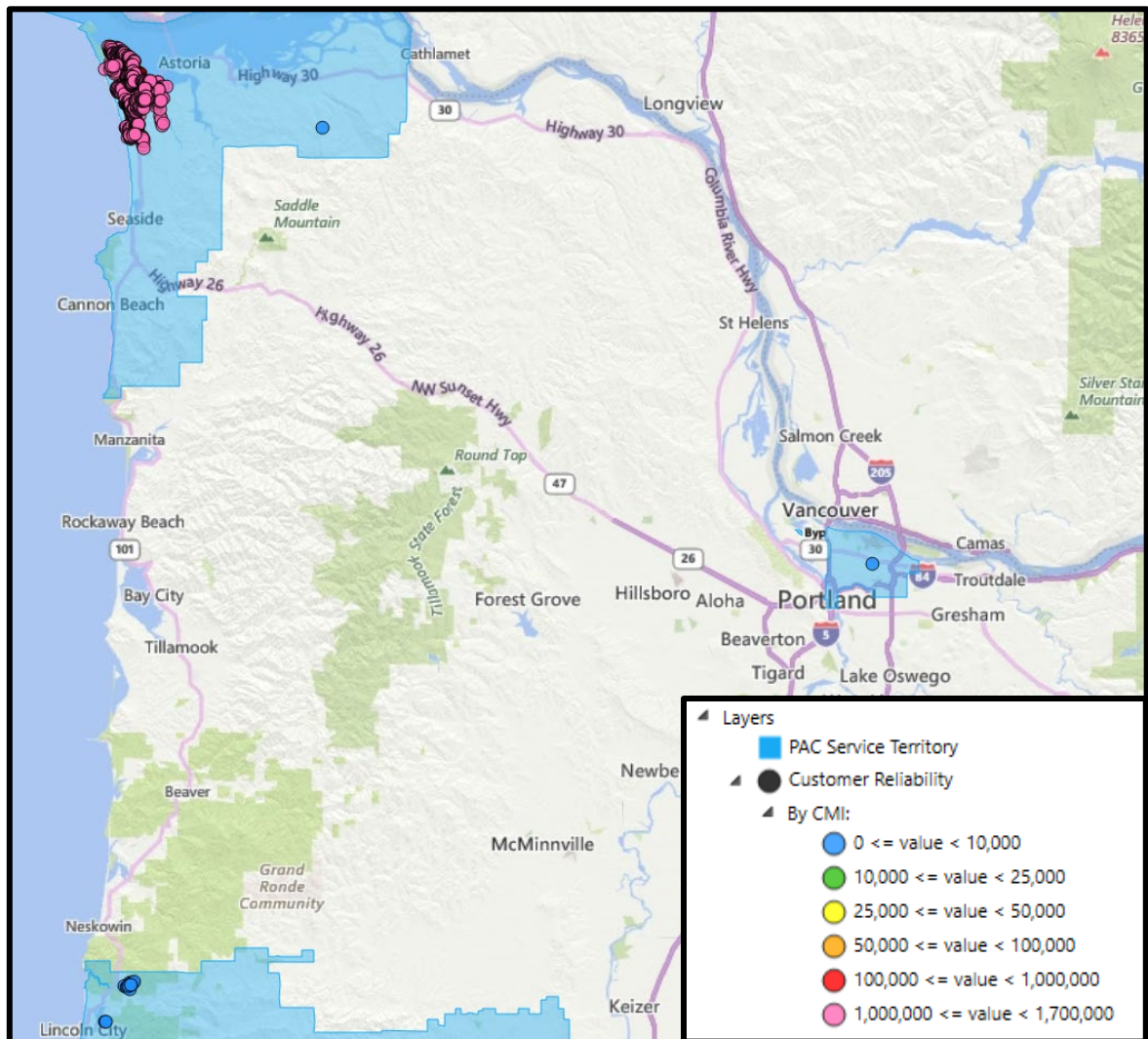
Event Customer Impact and Outage Summary

Event Outage Summary	
# Interruptions (sustained)	12
Total Customer Interrupted (sustained)	4,368
Total Customer Minutes Lost	3,121,772
State Event SAIDI	4.96 Minutes
CAIDI	715
Major Event Start	3/2/23 9:16 AM
Major Event End	3/3/23 9:16 AM

Area Outages and Restoration Details

On March 2, 2023, the Coast of Oregon experienced a major event due to an equipment failure on the 115 kV transmission line from Tillamook to Astoria. The event began at 9:16 a.m. affecting service to 4,368 customers and affected feeds to seven substations serving a total of eleven circuits. The duration of outages ranged from 9 minutes to 12 hours and 19 minutes. Crews assembled to make the repairs and found a broken crossarm and bad neutral connectors. The transformer was opened to make repairs. Some trees and branches were removed that were found in the overhead wires. These customers were without power for the duration of repairs due to the fact that the crews were unable to switch the load to another resource.

Coast Plus CML March 2nd at 09:16 to March 3rd at 09:16



Restoration Intervals

Total Customer Sustained Outage Events	< 3 Hrs.	3 – 24 Hrs.	24+ Hrs.
4,368	41	4,327	0

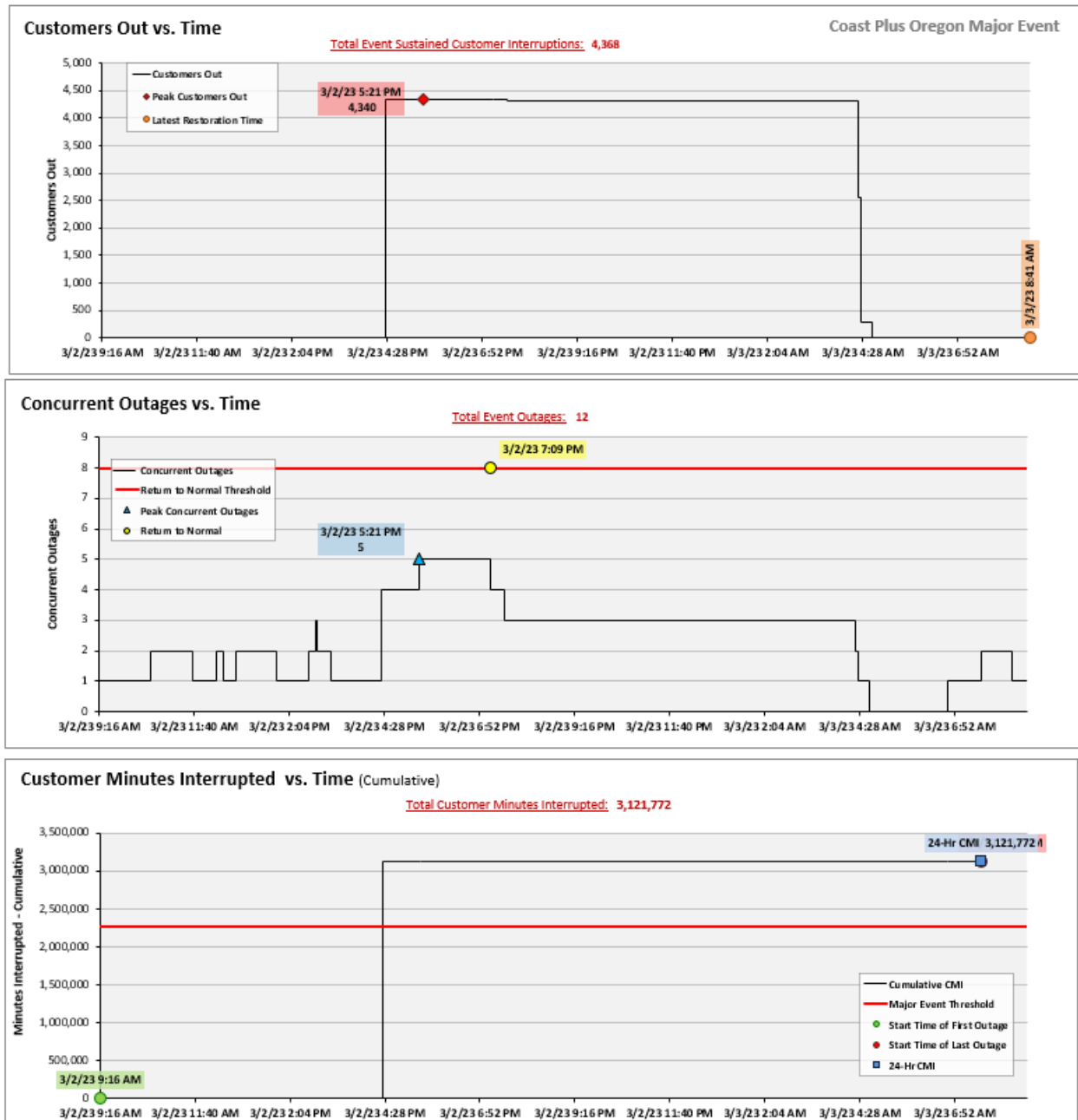
Weather

An area of low pressure was accompanied by a cold front that caused strong wind gusts along coastal districts on this day on the 2nd of March. Weather stations near Astoria recorded gusts between 40-45 mph as the cold front moved onshore on Thursday morning. This front was accompanied by rain and at times and snow levels that reached to down to sea level along the coast. Some minor snow accumulations were noted, but nothing that was of substantial depth.

Major Event Declaration

PacifiCorp designates these events and the consequences thereof a major event in accordance with OAR 860-023-0161. This is a major event because it exceeded the design or operating limits of the system, and the Major Event Threshold for Oregon as calculated annually by the company according to IEEE 1366-2022 methodology (commonly referred to as the 2.5 beta method). The company's 2022 Oregon reliability threshold is 4,723,224 customer minutes lost (7.50 Oregon SAIDI minutes) in a 24-hour period.

Event Details



SAIDI, SAIFI, CAIDI by Reliability Reporting Region
Please see the attached system-generated reports.

Attachment A

PacifiCorp Major Event Report
Customer Analysis

CoastPlus Oregon		Customer Analysis 3/2/2023 through 3/3/2023					Customers Restored by Intervals								Major Event Only - metric by operating area customer counts		
<i>PacifiCorp Major Events Report Customer Analysis*</i>		Sustained Customers Off	% Sustained Customers Off	CML	Number of Sustained Interruptions	Customer Count	< 5 min	5 min - 3 hrs	3 hrs - 24 hrs	24 hrs - 48 hrs	48 hrs - 72 hrs	72 hrs - 96 hrs	96 + hrs	% Sustained Customers Restored in 3 Hours PS4	SAIDI	SAIFI	CAIDI
PC	PACIFICORP	4,368	0%	3,121,772	12	2,054,233	-	41	4,327	-	-	-	-	1%	1.52	0.002	715
PP	Pacific Power	4,368	1%	3,121,772	12	812,454	-	41	4,327	-	-	-	-	1%	3.84	0.005	715
OR	Oregon	4,368	1%	3,121,772	12	629,398	-	41	4,327	-	-	-	-	1%	4.96	0.002	715
OR	CLATSOP (ASTORIA)	4,326	17%	3,118,639	4	25,424	-	-	4,326	-	-	-	-	0%	122.67	0.170	721
OR	COOS BAY/COQUILLE	1	0%	34	1	26,193	-	1	-	-	-	-	-	100%	0.00	0.000	34
OR	HOOD RIVER																
OR	LINCOLN CITY	33	0%	2,189	4	12,424	-	33	-	-	-	-	-	100%	0.18	0.003	66
OR	PORTLAND	8	0%	911	3	86,563	-	7	1	-	-	-	-	88%	0.01	0.000	114

*Only current event specific metric impact shown. Does not include values from other events which may have occurred in other regions during the same time period.

Data as of
3/7/2023

PacifiCorp Major Event Report

SSC by State Analysis

	CoastPlus Oregon	Event 03/02/23 through 03/03/23						Month 03/01/23 through 03/31/23						YTD FY2024 01/01/23 through 03/31/23					
		Major Events Included			Major Event Excluded			Major Events Included			Major Events Excluded*			Major Events Included			Major Events Excluded*		
		SAIDI	SAIFI	CAIDI	SAIDI	SAIFI	CAIDI	SAIDI	SAIFI	CAIDI	SAIDI	SAIFI	CAIDI	SAIDI	SAIFI	CAIDI	SAIDI	SAIFI	CAIDI
	PacifiCorp Major Events Report SSC by State																		
PC	PACIFICORP	1.67	0.004	429	0.15	0.002	83	3.00	0.017	181	1.48	0.014	102	31.44	0.177	178	16.92	0.133	127
PP	Pacific Power	3.93	0.008	499	0.09	0.002	36	6.15	0.028	221	2.31	0.022	103	39.54	0.252	157	21.48	0.183	117
OR	Oregon	5.06	0.010	504	0.10	0.003	32	6.04	0.016	389	1.09	0.009	126	31.36	0.204	154	20.51	0.184	112
OR	CLATSOP (ASTORIA)	4.95	0.007	721	0.02	0.000	499	4.96	0.007	714	0.01	0.000	121	6.83	0.047	146	1.87	0.040	47
OR	COOS BAY/COQUILLE	0.00	0.000	34				0.05	0.000	228	0.05	0.000	229	1.70	0.010	171	1.17	0.007	175
OR	HOOD RIVER							0.00	0.000	130	0.00	0.000	130	0.15	0.001	164	0.15	0.001	164
OR	LINCOLN CITY	0.00	0.000	66				0.00	0.000	70	0.00	0.000	84	5.63	0.021	268	0.35	0.012	30
OR	PORTLAND	0.02	0.000	400				0.14	0.001	150	0.14	0.001	151	1.04	0.008	136	0.94	0.007	136

*may include other regional major event exclusions during the same period. Operating areas are calculated by the state frozen customer count metrics.

Data as of
3/7/2023