

A photograph of a wind farm at sunset. The sky is a mix of orange, yellow, and blue, with wispy clouds. Several wind turbines are visible in the distance, silhouetted against the bright horizon. The foreground is a field of green grass.

HB 3141 Energy TrustEquity Performance Metrics UM 1158

October 27, 2022



Agenda



- 1:30 Introductory remarks and schedule
- 1:35 Data review experience with F. C. Hurdle and team
- 2:55 Closing remarks
- 3:00 Adjourn

SCHEDULE



	2022												2023				
	August			September			October			November			December			January	
Workshops	WS									WS							
Community engagements		Engagement prep			Engagements					Engagements							
Comment Period	-> Ongoing engagement opportunities ->							Draft metrics		Open comment		Update					
Commission decision																	PM

COMMUNITY ENGAGEMENT:
**PRELIMINARY
FINDINGS**

Thursday, October 27, 2022



MEET OUR TEAM



**Conrad
Hurdle**



**Manuhuia
Barcham**



**Amaryllis
Quintanilla**

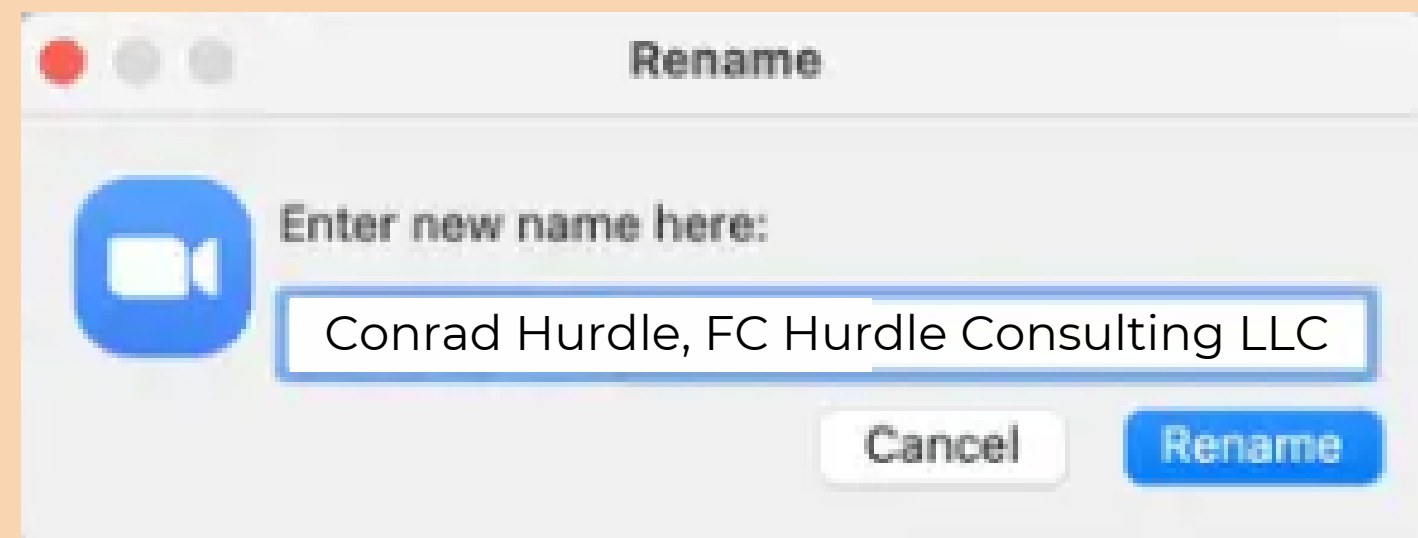


**Kidus
Yared**



ZOOM NAME

- YOUR NAME
- ORGANIZATION
 - EXAMPLE: *CONRAD HURDLE, FC HURDLE CONSULTING LLC*



CHECKING-IN



1 **2**

3 **4**

So far, which corner best describes where you are right now?

TODAY'S LEARNING



01

Providing preliminary findings from community engagement with:

- OPUC Stakeholders Event- August
- Ontario: Conéctate Conference- September
- Cave Junction: Illinois Valley Community Development Organization- October

02

Participants to explore and discover findings through:

- Analyzing visual data displays
- Completing a discovery tool

PROMISING PRACTICES

What does a successful practice look like?

- Relationships and Community Partnerships
 - Cave Junction
 - Karen Chase
 - Lindsay Jones
 - Conéctate
 - Ezell Watson
 - Caryn Appler

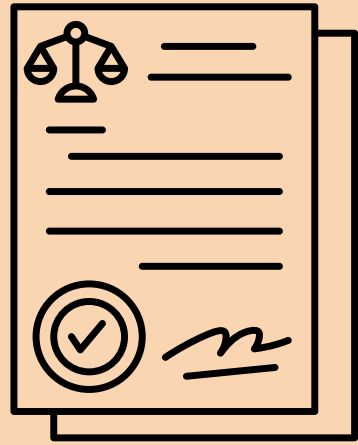


METHODOLOGY & PROCESS LEARNING

- This is human work
- Nimble methodology to connect to the dynamic nature of community engagement
- Previous experiences facilitating equity work
- Meeting communities where they are
- The process to hear from both the community leader and the individual community member

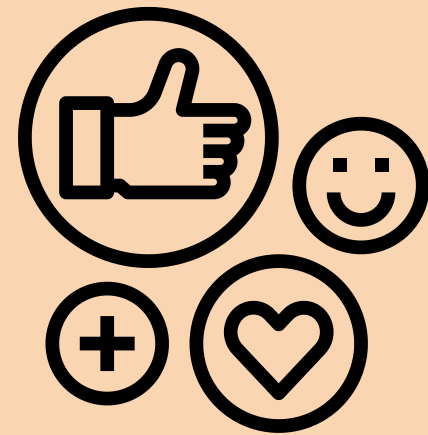


ACTIVITY TIMELINE



GROUNDWORK

- HB 3141



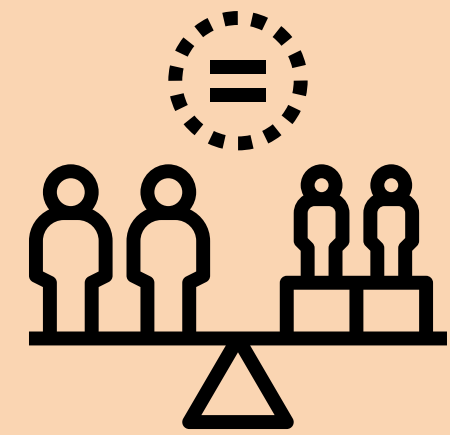
ENGAGEMENT

- August 4- OPUC Stakeholder Workshop #1
- September-October Community Engagement



REPORTING

- October 27- OPUC Stakeholder: Workshop #2 Data Review
- October 31- OPUC Stakeholder: Workshop #3 Equity Metrics Suggestions

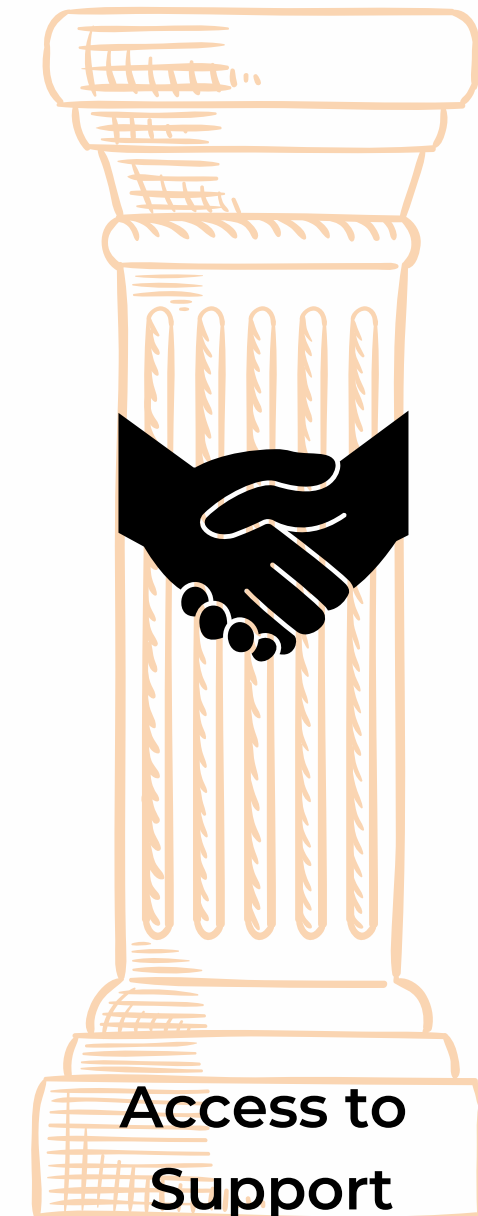
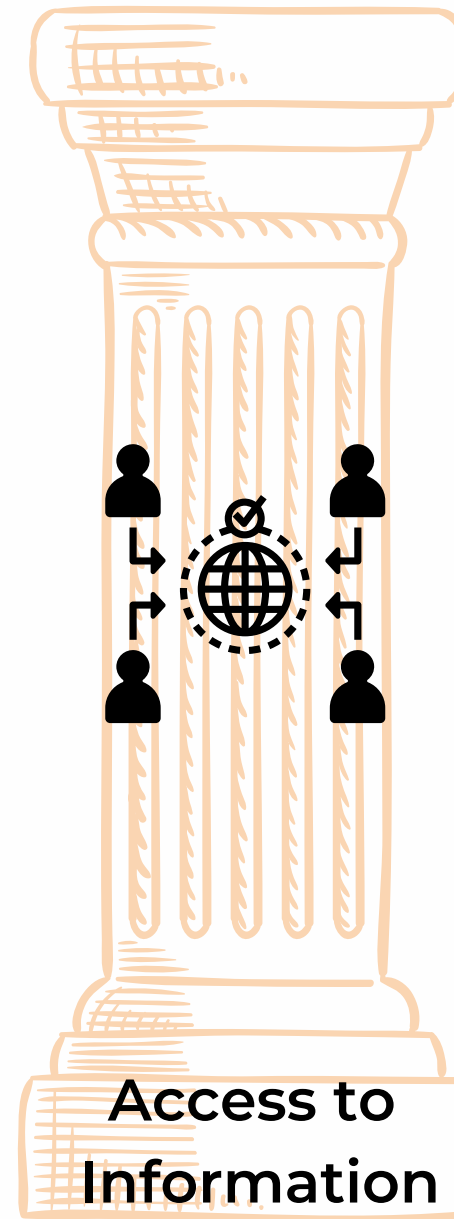
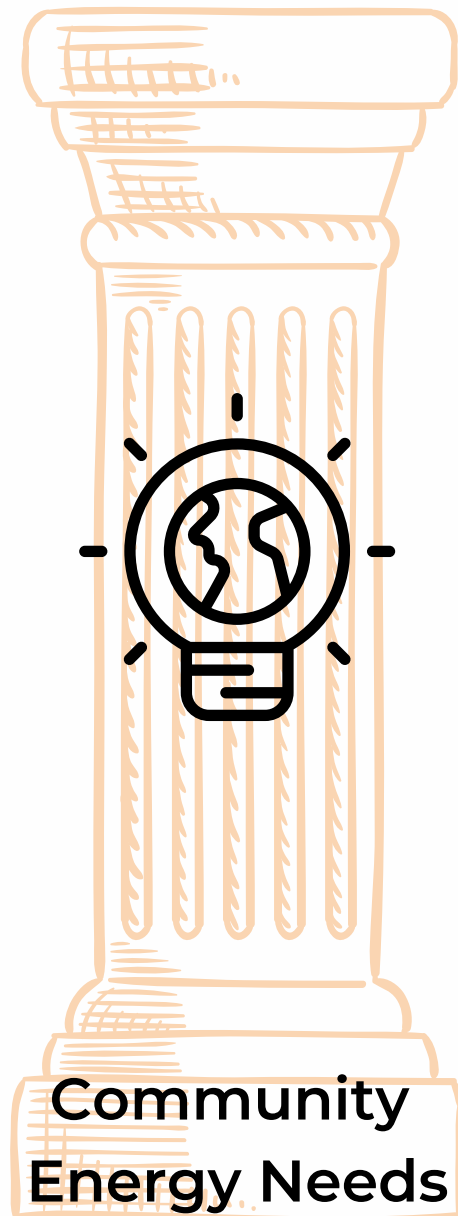


EQUITY METRIC

- Equity Metric Development Activities
- Equity Metric Decisions



ENGAGEMENT ELEMENTS



ENGAGEMENT CATEGORIES

MICRO

Individual level,
immediate human
needs, and tangible
energy-related
resources to sustain
basic living standards

MACRO

Organizational level
(Institutions,
Community
Organizations, Large
Companies, & Small
Businesses)

INTERCONNECTEDNESS



MICRO

Individual level,
immediate human
needs, and tangible
energy-related
resources to sustain
basic living standards

MACRO

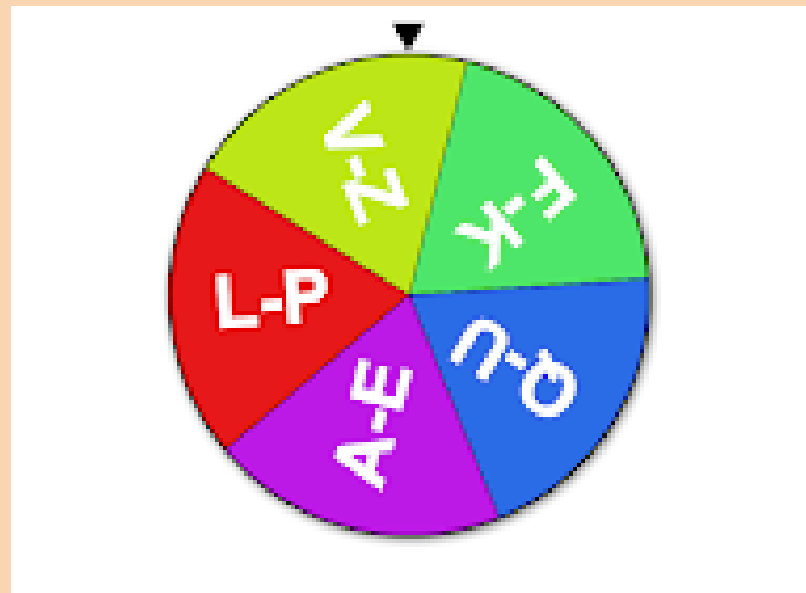
Organizational level
(Institutions,
Community
Organizations, Large
Companies, & Small
Businesses)

OPPORTUNITY SUMMARY

These are brief statements designed to provide a synopsis of the findings and highlight areas of opportunity for greater focus.

ACTIVATING

What do you typically hear when communities think about energy?





EXPLORING & DISCOVERING TIME

15 minutes to explore the findings
10 minutes write your discoveries





EXAMPLE- OPUC STAKEHOLDER EVENT

1. Do the communities you work with know about the potential benefits of HB 3141? If not, how can OPUC/Energy Trust bring awareness to local communities?

Opportunity Summary

The advocates are aware of HB3141 benefits however the public is not. There is a need for a public messaging campaign or dissemination through existing outreach channels and methods. Thus far, the customers are asking for various energy programs; it should be OPUC/ETO that should be reaching out. It's also evident there is a need to clarify what are the program benefits in order for customers to understand the various programs available and applicable to them.



EXAMPLE- CAVE JUNCTION COMMUNITY CAFE

As business/organization leaders when you think of the term community who are you thinking about?

Micro

- I think of schools
- People in the community

Macro

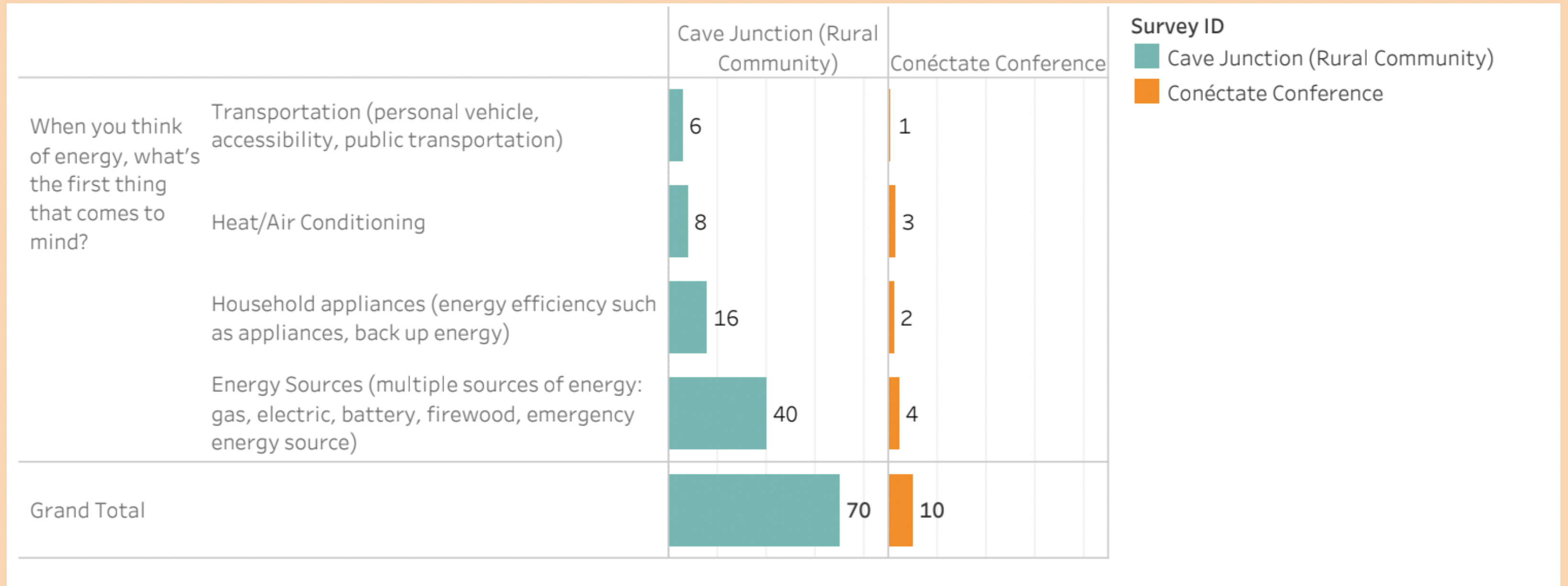
- The senior center what they need and their requirements
- Our community-based organizations such as Lions Club
- Cartel growers who live here are part of the community (with some reservations). Trimmigrants who come for seasonal work and then move on.

Opportunity Summary

People's understanding of community is diverse, ranging from schools and non-profit community groups to members of cartels. There is a diverse range of opinions around the level of commitment that different people in the community have to the community, but it is generally positive.

EXAMPLE

ONLINE SURVEY RESULTS FOR CAVE JUNCTION/CONÉCTATE



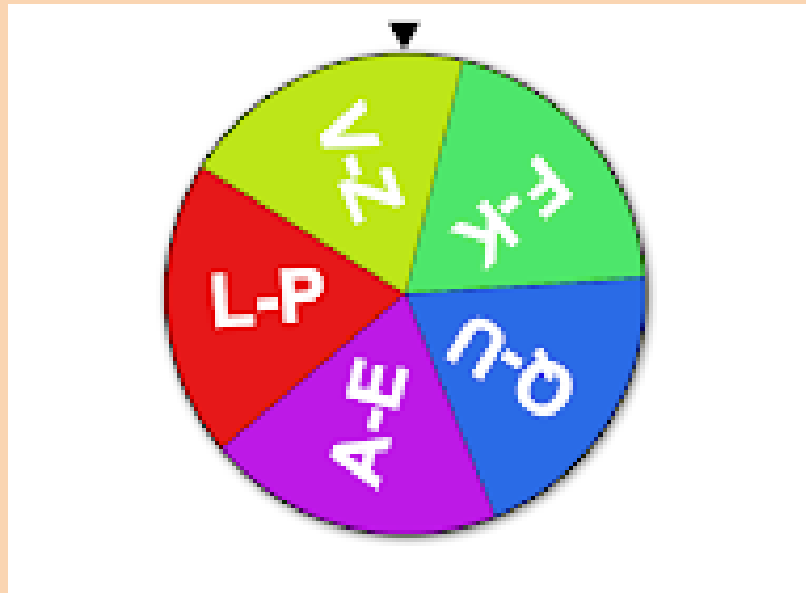
DISCOVERIES TOOL

- What important points seem to “pop-out”?
- What are some patterns, categories, or trends that are emerging?
- What seems to be surprising or unexpected?
- What are some ways we have not yet explored these findings?

UNPACKING THE FINDINGS, EXPLORING, & DISCOVERING



SHARING A DISCOVERY



Thank You!



Our next event is on Monday at 10am.

Anna Kim

Anna.Kim@puc.oregon.gov

Sarah Hall

Sarah.L.Hall@puc.oregon.gov